

# Anti-EEF2/Elongation factor 2 antibody ab33523

★★★★★ [2 Abreviews](#) [12 References](#) [6 图像](#)

### 概述

产品名称	Anti-EEF2/Elongation factor 2抗体
描述	兔多克隆抗体to EEF2/Elongation factor 2
宿主	Rabbit
经测试应用	适用于: IP, IHC-P, ICC/IF, WB
种属反应性	与反应: Mouse, Rat, Human, Zebrafish 预测可用于: Chicken, Hamster, Cow, Xenopus laevis 
免疫原	Synthetic peptide corresponding to Human EEF2/Elongation factor 2 aa 400-500 conjugated to keyhole limpet haemocyanin. (Peptide available as <a href="#">ab33522</a> )
阳性对照	This antibody gave a positive signal in the following whole cell lysates: Jurkat; A431; HEK 293; HepG2; MCF-7; SHSY-5Y; U2OS; NIH 3T3; MEF1; PC12. This antibody gave a positive signal in the following tissue lysates: Mouse Pancreas; Mouse Ovary; Rat Liver. IHC-P: human lung FFPE tissue sections
常规说明	<p>The Life Science industry has been in the grips of a reproducibility crisis for a number of years. Abcam is leading the way in addressing this with our range of recombinant monoclonal antibodies and knockout edited cell lines for gold-standard validation. Please check that this product meets your needs before purchasing.</p> <p>If you have any questions, special requirements or concerns, please send us an inquiry and/or contact our Support team ahead of purchase. Recommended alternatives for this product can be found below, along with publications, customer reviews and Q&amp;As</p>

### 性能

形式	Liquid
存放说明	Shipped at 4°C. Store at +4°C short term (1-2 weeks). Upon delivery aliquot. Store at -20°C or -80°C. Avoid freeze / thaw cycle.
存储溶液	pH: 7.40 Preservative: 0.02% Sodium azide Constituent: PBS

Batches of this product that have a concentration < 1mg/ml may have BSA added as a stabilising agent. If you would like information about the formulation of a specific lot, please contact our

scientific support team who will be happy to help.

纯度	Immunogen affinity purified
克隆	多克隆
同种型	IgG

## 应用

**The Abpromise guarantee**      **Abpromise™** 承诺保证使用ab33523于以下的经测试应用

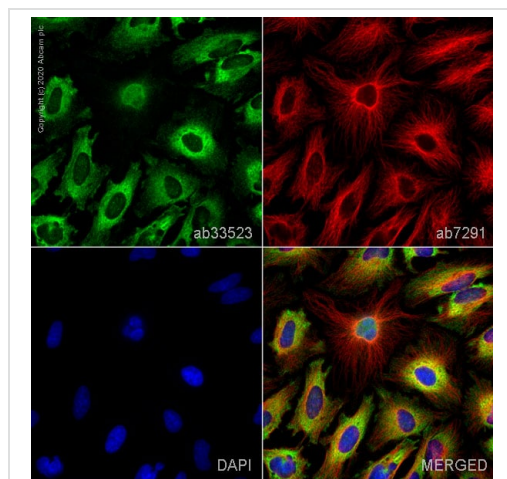
“应用说明”部分 下显示的仅为推荐的起始稀释度;实际最佳的稀释度/浓度应由使用者检定。

应用	Ab评论	说明
IP		Use a concentration of 5 µg/ml.
IHC-P		Use a concentration of 1 µg/ml. Perform heat mediated antigen retrieval before commencing with IHC staining protocol.
ICC/IF		Use a concentration of 1 µg/ml.
WB	★★★★★ (2)	Use at an assay dependent concentration. Detects a band of approximately 95 kDa (predicted molecular weight: 95 kDa).

## 靶标

功能	Catalyzes the GTP-dependent ribosomal translocation step during translation elongation. During this step, the ribosome changes from the pre-translocational (PRE) to the post-translocational (POST) state as the newly formed A-site-bound peptidyl-tRNA and P-site-bound deacylated tRNA move to the P and E sites, respectively. Catalyzes the coordinated movement of the two tRNA molecules, the mRNA and conformational changes in the ribosome.
序列相似性	Belongs to the GTP-binding elongation factor family. EF-G/EF-2 subfamily.
翻译后修饰	Phosphorylation by EF-2 kinase completely inactivates EF-2. Diphthamide is 2-[3-carboxyamido-3-(trimethyl-ammonio)propyl]histidine. Diphthamide can be ADP-ribosylated by diphtheria toxin and by Pseudomonas exotoxin A, thus arresting protein synthesis. ISGylated.
细胞定位	Cytoplasm.

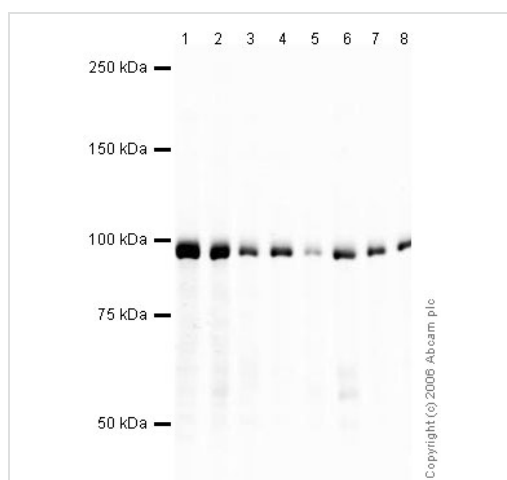
## 图片



Immunocytochemistry/ Immunofluorescence - Anti-EEF2/Elongation factor 2 antibody (ab33523)

ab33523 staining EEF2 in HeLa cells. The cells were fixed with 100% methanol (5 min), permeabilized with 0.1% PBS-Triton X-100 for 5 minutes and then blocked with 1% BSA/10% normal goat serum/0.3M glycine in 0.1%PBS-Tween for 1h. The cells were then incubated overnight at 4°C with ab33523 at 1µg/ml and **ab7291**, Mouse monoclonal [DM1A] to alpha Tubulin - Loading Control. Cells were then incubated with **ab150081**, Goat polyclonal Secondary Antibody to Rabbit IgG - H&L (Alexa Fluor® 488), pre-adsorbed at 1/1000 dilution (shown in green) and **ab150120**, Goat polyclonal Secondary Antibody to Mouse IgG - H&L (Alexa Fluor® 594), pre-adsorbed at 1/1000 dilution (shown in pseudocolour red). Nuclear DNA was labelled with DAPI (shown in blue).

Image was acquired with a high-content analyser (Operetta CLS, Perkin Elmer) and a maximum intensity projection of confocal sections is shown.



Western blot - Anti-EEF2/Elongation factor 2 antibody (ab33523)

**All lanes** : Anti-EEF2/Elongation factor 2 antibody (ab33523) at 1 µg/ml

**Lane 1** : HeLa (Human epithelial carcinoma cell line) Whole Cell Lysate

**Lane 2** : Jurkat whole cell lysate (**ab7899**)

**Lane 3** : A-431 whole cell lysate (**ab7909**)

**Lane 4** : HEK-293 whole cell lysate (**ab7902**)

**Lane 5** : Hep G2 whole cell lysate (**ab7900**)

**Lane 6** : MCF-7 (Human breast adenocarcinoma cell line) Whole Cell Lysate

**Lane 7** : SHSY-5Y (Human Neuroblastoma) Whole Cell Lysate

**Lane 8** : U2OS (Human osteosarcoma cell line) Whole Cell Lysate

Lysates/proteins at 10 µg per lane.

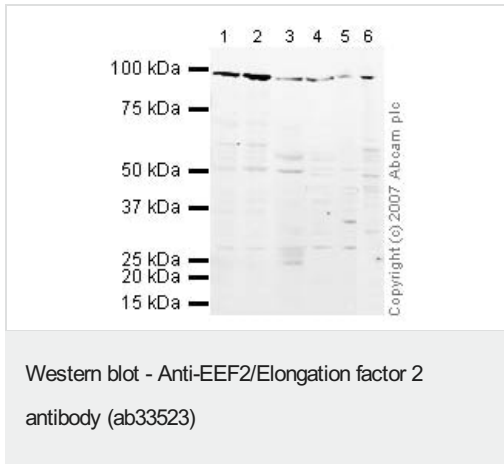
## Secondary

**All lanes** : IRDye 680 Conjugated Goat Anti-Rabbit IgG (H+L) at 1/15000 dilution

Performed under reducing conditions.

**Predicted band size:** 95 kDa

**Observed band size:** 95 kDa



**All lanes :** Anti-EEF2/Elongation factor 2 antibody (ab33523) at 1 µg/ml

**Lane 1 :** NIH/3T3 whole cell lysate ([ab7179](#))

**Lane 2 :** MEF1 (Mouse embryonic fibroblast cell line) Whole Cell Lysate

**Lane 3 :** Mouse pancreas tissue lysate - total protein ([ab29363](#))

**Lane 4 :** Ovary (Mouse) Tissue Lysate - normal tissue

**Lane 5 :** PC12 (Rat adrenal pheochromocytoma cell line) Whole Cell Lysate

**Lane 6 :** Liver (Rat) Tissue Lysate - normal tissue

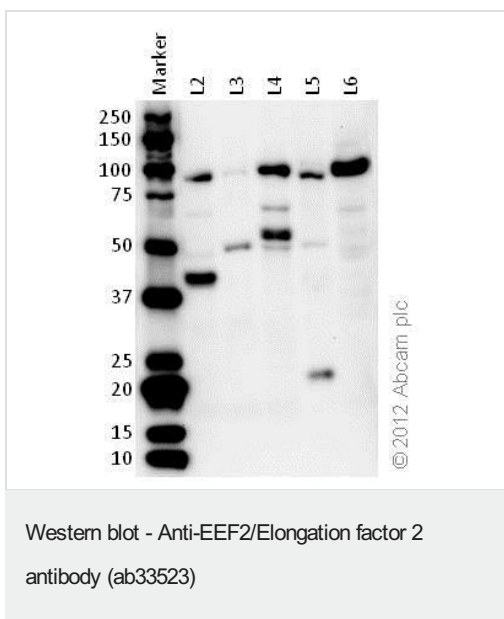
Lysates/proteins at 10 µg per lane.

### Secondary

**All lanes :** IRDye 680 Conjugated Goat Anti-Rabbit IgG (H+L) at 1/10000 dilution

**Predicted band size:** 95 kDa

**Observed band size:** 95 kDa



**All lanes :** Anti-EEF2/Elongation factor 2 antibody (ab33523) at 1 µg/ml

**Lane 1 :** Marker

**Lane 2 :** Zebrafish brain homogenate (20ug)

**Lane 3 :** Zebrafish heart homogenate (20ug)

**Lane 4 :** Zebrafish liver homogenate (20ug)

**Lane 5 :** Zebrafish skeletal muscle homogenate (20ug)

**Lane 6 :** HeLa (Human epithelial carcinoma cell line) Whole Cell Lysate (20ug)

### Secondary

**All lanes :** Goat polyclonal to Rabbit IgG – H&L – Pre-Adsorbed (HRP) at 1/6000 dilution

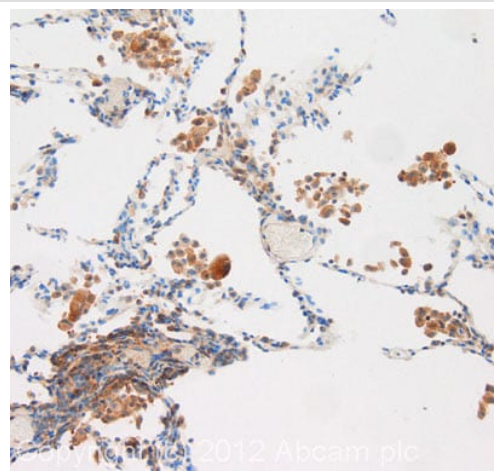
Developed using the ECL technique.

Performed under reducing conditions.

**Predicted band size:** 95 kDa

**Observed band size:** 95 kDa

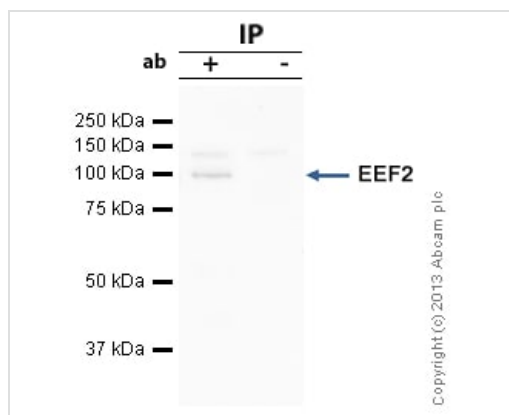
**Exposure time:** 5 minutes



Immunohistochemistry (Formalin/PFA-fixed paraffin-embedded sections) - Anti-EEF2/Elongation factor 2 antibody (ab33523)

IHC image of EEF2/Elongation factor 2 staining in human lung formalin fixed paraffin embedded tissue section, performed on a Leica Bond™ system using the standard protocol F. The section was pre-treated using heat mediated antigen retrieval with sodium citrate buffer (pH6, epitope retrieval solution 1) for 20 mins. The section was then incubated with ab33523, 1µg/ml, for 15 mins at room temperature and detected using an HRP conjugated compact polymer system. DAB was used as the chromogen. The section was then counterstained with haematoxylin and mounted with DPX.

For other IHC staining systems (automated and non-automated) customers should optimize variable parameters such as antigen retrieval conditions, primary antibody concentration and antibody incubation times.



Immunoprecipitation - Anti-EEF2/Elongation factor 2 antibody (ab33523)

EEF2/Elongation factor 2 was immunoprecipitated using 0.5mg Hela whole cell extract, 5µg of Rabbit polyclonal to EEF2/Elongation factor 2 and 50µl of protein G magnetic beads (+). No antibody was added to the control (-).

The antibody was incubated under agitation with Protein G beads for 10min, Hela whole cell extract lysate diluted in RIPA buffer was added to each sample and incubated for a further 10min under agitation.

Proteins were eluted by addition of 40µl SDS loading buffer and incubated for 10min at 70°C; 10µl of each sample was separated on a SDS PAGE gel, transferred to a nitrocellulose membrane, blocked with 5% BSA and probed with ab33523.

Secondary: Mouse monoclonal [SB62a] Secondary Antibody to Rabbit IgG light chain (HRP) ([ab99697](#)).

Band: 95kDa; EEF2/Elongation factor 2, non-specific band: 135kDa, due to background seen in No ab control lane (2).

**Please note:** All products are "FOR RESEARCH USE ONLY. NOT FOR USE IN DIAGNOSTIC PROCEDURES"

**Our Abpromise to you: Quality guaranteed and expert technical support**

- Replacement or refund for products not performing as stated on the datasheet
- Valid for 12 months from date of delivery
- Response to your inquiry within 24 hours
- We provide support in Chinese, English, French, German, Japanese and Spanish
- Extensive multi-media technical resources to help you
- We investigate all quality concerns to ensure our products perform to the highest standards

If the product does not perform as described on this datasheet, we will offer a refund or replacement. For full details of the Abpromise, please visit <https://www.abcam.cn/abpromise> or contact our technical team.

#### **Terms and conditions**

---

- Guarantee only valid for products bought direct from Abcam or one of our authorized distributors