


Anti-EDC4 antibody ab72408

★★★★★ [5 Abreviews](#) [13 References](#) [4 图像](#)

概述

产品名称	Anti-EDC4抗体
描述	兔多克隆抗体to EDC4
宿主	Rabbit
经测试应用	适用于: ICC/IF, WB, IP, IHC-P
种属反应性	与反应: Mouse, Human 预测可用于: Chimpanzee, Rhesus monkey, Gorilla, Orangutan 
免疫原	Synthetic peptide corresponding to Human EDC4. Database link: Q6P2E9
阳性对照	WB: HeLa, HEK293T, Jurkat, NIH 3T3 and TCMK-1 cells. IHC-P: human normal skin. IP: HeLa cells.
常规说明	<p>The Life Science industry has been in the grips of a reproducibility crisis for a number of years. Abcam is leading the way in addressing this with our range of recombinant monoclonal antibodies and knockout edited cell lines for gold-standard validation. Please check that this product meets your needs before purchasing.</p> <p>If you have any questions, special requirements or concerns, please send us an inquiry and/or contact our Support team ahead of purchase. Recommended alternatives for this product can be found below, along with publications, customer reviews and Q&As</p>

性能

形式	Liquid
存放说明	Shipped at 4°C. Upon delivery aliquot and store at -20°C. Avoid freeze / thaw cycles.
存储溶液	pH: 6.8 Preservative: 0.09% Sodium azide Constituents: 0.1% BSA, Tris buffered saline
纯度	Immunogen affinity purified
克隆	多克隆
同种型	IgG

应用

The Abpromise guarantee

Abpromise™ 承诺保证使用 ab72408 于以下的经测试应用

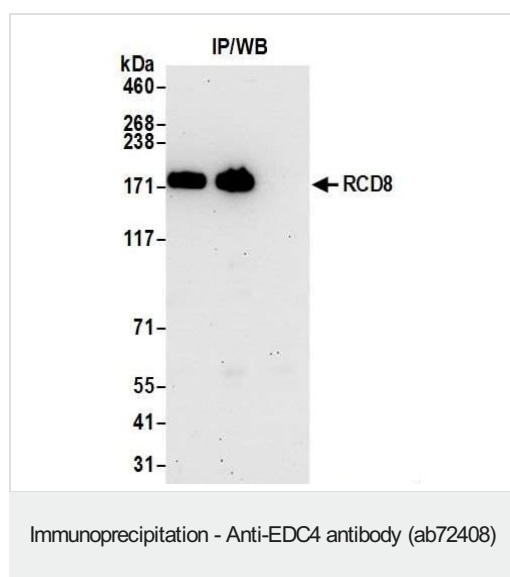
“应用说明”部分下显示的仅为推荐的起始稀释度；实际最佳的稀释度/浓度应由使用者检定。

应用	Ab评论	说明
ICC/IF	★★★★★ (2)	Use at an assay dependent concentration. PubMed: 19729507
WB	★★★★★ (1)	1/2000 - 1/10000. Detects a band of approximately 55, 190 kDa (predicted molecular weight: 152 kDa).
IP	★★★★★ (2)	Use at 2-5 µg/mg of lysate.
IHC-P		Use a concentration of 5 µg/ml. Perform heat mediated antigen retrieval with citrate buffer pH 6 before commencing with IHC staining protocol.

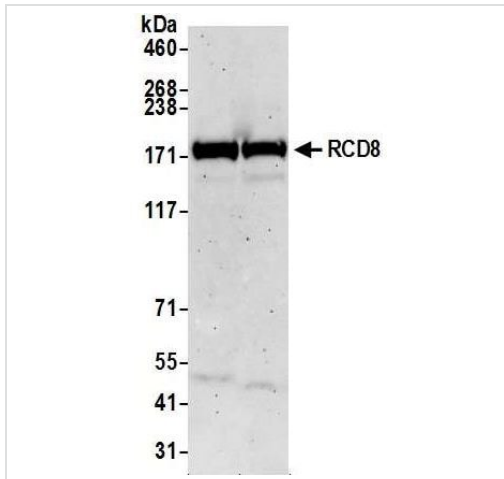
靶标

功能	In the process of mRNA degradation, seems to play a role in mRNA decapping. Component of a complex containing DCP2 and DCP1A which functions in decapping of ARE-containing mRNAs. Promotes complex formation between DCP1A and DCP2. Enhances the catalytic activity of DCP2 (in vitro).
序列相似性	Belongs to the WD repeat EDC4 family. Contains 4 WD repeats.
翻译后修饰	Phosphorylated upon DNA damage, probably by ATM or ATR.
细胞定位	Cytoplasm > P-body. Nucleus.

图片



Immunoprecipitation/ Western Blot of EDC4. Lane 1: ab72408 at 6µg/mg whole cell lysate. Lane 2: Different lot of ab72408 at 6µg/ml for WB. Lane 3: Control IgG. Whole cell lysate from Hela cells at 1mg for IP, 20% of IP loaded. Chemiluminescence with an exposure time of 3 minutes.



Western blot - Anti-EDC4 antibody (ab72408)

All lanes : Anti-EDC4 antibody (ab72408) at 1/2000 dilution

Lane 1 : NIH 3T3 Whole cell lysate

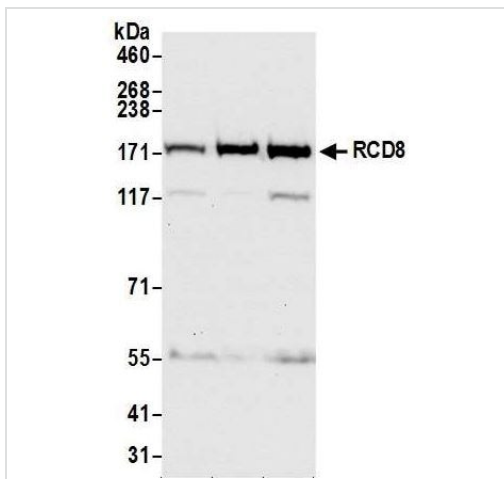
Lane 2 : TCMK-1 Whole cell lysate

Lysates/proteins at 50 µg per lane.

Secondary

All lanes : Goat anti-Rabbit Light Chain HRP Conjugate

Predicted band size: 152 kDa



Western blot - Anti-EDC4 antibody (ab72408)

All lanes : Anti-EDC4 antibody (ab72408) at 1/2000 dilution

Lane 1 : HeLa Whole cell lysate

Lane 2 : HEK293T Whole cell lysate

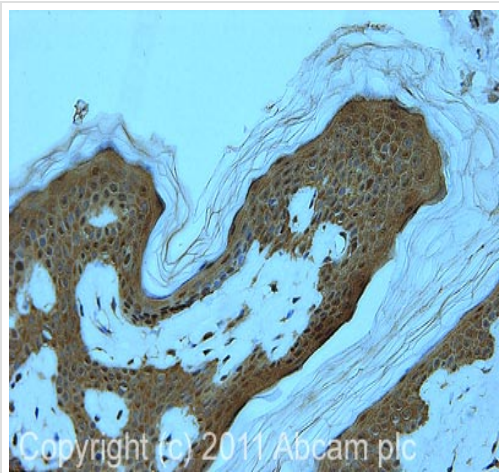
Lane 3 : Jurkat Whole cell lysate

Lysates/proteins at 50 µg per lane.

Secondary

All lanes : Goat anti-Rabbit Light Chain HRP Conjugate

Predicted band size: 152 kDa



Immunohistochemistry (Formalin/PFA-fixed paraffin-embedded sections) - Anti-EDC4 antibody (ab72408)

IHC image of ab72408 staining in human normal skin formalin fixed paraffin embedded tissue section, performed on a Leica Bond™ system using the standard protocol F. The section was pre-treated using heat mediated antigen retrieval with sodium citrate buffer (pH6, epitope retrieval solution 1) for 20 mins. The section was then incubated with ab72408, 5µg/ml, for 15 mins at room temperature and detected using an HRP conjugated compact polymer system. DAB was used as the chromogen. The section was then counterstained with haematoxylin and mounted with DPX.

For other IHC staining systems (automated and non-automated) customers should optimize variable parameters such as antigen retrieval conditions, primary antibody concentration and antibody incubation times.

Please note: All products are "FOR RESEARCH USE ONLY. NOT FOR USE IN DIAGNOSTIC PROCEDURES"

Our Abpromise to you: Quality guaranteed and expert technical support

- Replacement or refund for products not performing as stated on the datasheet
- Valid for 12 months from date of delivery
- Response to your inquiry within 24 hours

- We provide support in Chinese, English, French, German, Japanese and Spanish
- Extensive multi-media technical resources to help you
- We investigate all quality concerns to ensure our products perform to the highest standards

If the product does not perform as described on this datasheet, we will offer a refund or replacement. For full details of the Abpromise, please visit <https://www.abcam.cn/abpromise> or contact our technical team.

Terms and conditions

- Guarantee only valid for products bought direct from Abcam or one of our authorized distributors