

# Anti-EBI3 antibody ab83896

[5 References](#) [3 图像](#)

### 概述

产品名称	Anti-EBI3抗体
描述	兔多克隆抗体to EBI3
宿主	Rabbit
经测试应用	适用于: ICC/IF, WB, IHC-P
种属反应性	与反应: Rat, Human
免疫原	16 amino acid synthetic peptide corresponding to an internal sequence of Human EBI3
常规说明	<p>The Life Science industry has been in the grips of a reproducibility crisis for a number of years. Abcam is leading the way in addressing this with our range of recombinant monoclonal antibodies and knockout edited cell lines for gold-standard validation. Please check that this product meets your needs before purchasing.</p> <p>If you have any questions, special requirements or concerns, please send us an inquiry and/or contact our Support team ahead of purchase. Recommended alternatives for this product can be found below, along with publications, customer reviews and Q&amp;As</p>

### 性能

形式	Liquid
存放说明	Shipped at 4°C. Store at +4°C short term (1-2 weeks). Store at -20°C. Avoid freeze / thaw cycle.
存储溶液	pH: 7.2 Preservative: 0.02% Sodium azide Constituent: PBS
纯度	Immunogen affinity purified
克隆	多克隆
同种型	IgG

### 应用

**The Abpromise guarantee** **Abpromise™**承诺保证使用ab83896于以下的经测试应用

“应用说明”部分下显示的仅为推荐的起始稀释度;实际最佳的稀释度/浓度应由使用者检定。

应用	Ab评论	说明
ICC/IF		Use a concentration of 20 µg/ml.
WB		Use a concentration of 0.5 - 2 µg/ml. Detects a band of approximately 30 kDa (predicted molecular weight: 25 kDa).
IHC-P		Use a concentration of 2.5 µg/ml.

## 靶标

### 功能

Associates with IL27 to form the IL-27 interleukin, a heterodimeric cytokine which functions in innate immunity. IL-27 has pro- and anti-inflammatory properties, that can regulate T-helper cell development, suppress T-cell proliferation, stimulate cytotoxic T-cell activity, induce isotype switching in B-cells, and that has diverse effects on innate immune cells. Among its target cells are CD4 T-helper cells which can differentiate in type 1 effector cells (TH1), type 2 effector cells (TH2) and IL17 producing helper T-cells (TH17). It drives rapid clonal expansion of naive but not memory CD4 T-cells. It also strongly synergizes with IL-12 to trigger interferon-gamma/IFN-gamma production of naive CD4 T-cells, binds to the cytokine receptor WSX-1/TCCR. Another important role of IL-27 is its antitumor activity as well as its antiangiogenic activity with activation of production of antiangiogenic chemokines.

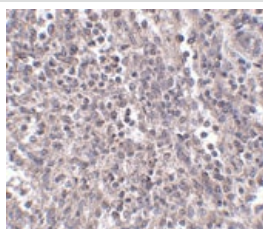
### 序列相似性

Belongs to the type I cytokine receptor family. Type 3 subfamily.  
Contains 2 fibronectin type-III domains.

### 细胞定位

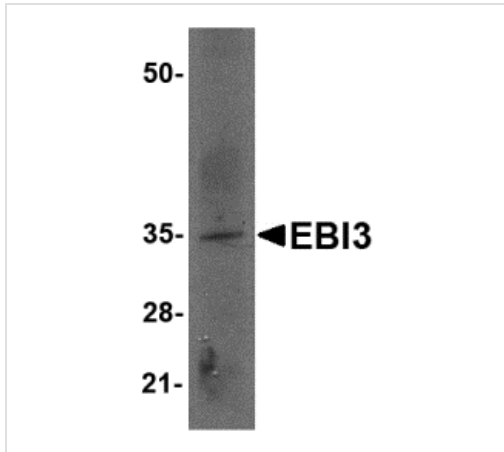
Secreted.

## 图片



ab83896 at 2.5µg/ml staining EB13 in human spleen tissue.

Immunohistochemistry (Formalin/PFA-fixed paraffin-embedded sections) - Anti-EB13 antibody (ab83896)



Western blot - Anti-EBI3 antibody (ab83896)

Anti-EBI3 antibody (ab83896) at 2 µg/ml + Rat spleen tissue lysate at 15 µg

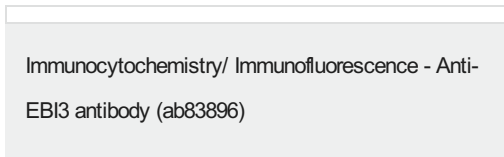
**Secondary**

Goat anti-rabbit IgG (HRP) at 1/10000 dilution

**Predicted band size:** 25 kDa

**Observed band size:** 35 kDa

**Diluting buffer:** 5% NFDM/TBST.



Immunofluorescence of EB13 in Human Spleen cells using ab83896 at 20 µg/ml.

**Please note:** All products are "FOR RESEARCH USE ONLY. NOT FOR USE IN DIAGNOSTIC PROCEDURES"

**Our Abpromise to you: Quality guaranteed and expert technical support**

- Replacement or refund for products not performing as stated on the datasheet
- Valid for 12 months from date of delivery
- Response to your inquiry within 24 hours
- We provide support in Chinese, English, French, German, Japanese and Spanish
- Extensive multi-media technical resources to help you
- We investigate all quality concerns to ensure our products perform to the highest standards

If the product does not perform as described on this datasheet, we will offer a refund or replacement. For full details of the Abpromise, please visit <https://www.abcam.cn/abpromise> or contact our technical team.

**Terms and conditions**

- Guarantee only valid for products bought direct from Abcam or one of our authorized distributors