

Anti-E4F1 antibody ab70615

[1 References](#) [2 图像](#)

概述

产品名称	Anti-E4F1抗体
描述	兔多克隆抗体to E4F1
宿主	Rabbit
经测试应用	适用于: WB, IP
种属反应性	与反应: Human
免疫原	Synthetic peptide corresponding to Human E4F1. Corresponding to a region between residue 275 and 325 of human E4F1 Database link: Q66K89
阳性对照	HeLa, 293T, and MCF7 whole cell lysates.
常规说明	<p>The Life Science industry has been in the grips of a reproducibility crisis for a number of years. Abcam is leading the way in addressing this with our range of recombinant monoclonal antibodies and knockout edited cell lines for gold-standard validation. Please check that this product meets your needs before purchasing.</p> <p>If you have any questions, special requirements or concerns, please send us an inquiry and/or contact our Support team ahead of purchase. Recommended alternatives for this product can be found below, along with publications, customer reviews and Q&As</p>

性能

形式	Liquid
存放说明	Shipped at 4°C. Upon delivery aliquot and store at -20°C. Avoid freeze / thaw cycles.
存储溶液	pH: 7 Preservative: 0.09% Sodium azide Constituents: 1.815% Tris, 1.764% Sodium citrate, 0.021% PBS
纯度	Immunogen affinity purified
纯化说明	ab70615 was affinity purified using an epitope specific to E4F1 immobilized on solid support.
克隆	多克隆
同种型	IgG

应用

The Abpromise guarantee

Abpromise™承诺保证使用ab70615于以下的经测试应用

“应用说明”部分 下显示的仅为推荐的起始稀释度;实际最佳的稀释度/浓度应由使用者检定。

应用	Ab评论	说明
WB		1/2000 - 1/10000. Detects a band of approximately 120 kDa (predicted molecular weight: 84 kDa).
IP		Use at 2 µg/mg of lysate.

靶标

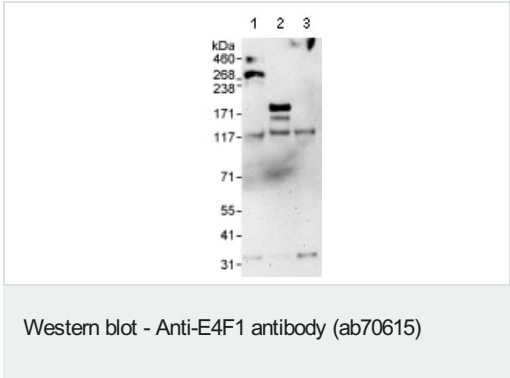
相关性

E4F1 is a zinc finger transcription factor that inhibits cell proliferation. E4F1 interacts with Bmi1 in hematopoietic cells and is important for the regulation of stem cell proliferation.

细胞定位

Nuclear

图片



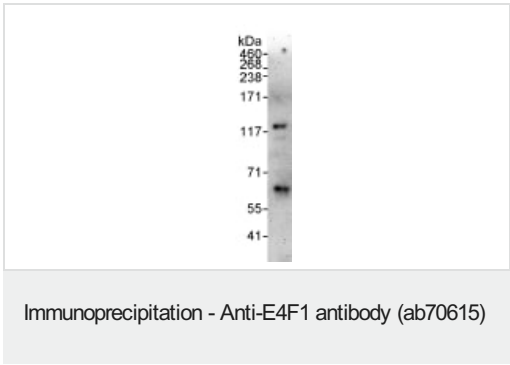
All lanes : Anti-E4F1 antibody (ab70615) at 0.1 µg/ml

- Lane 1 : HeLa whole cell lysate
- Lane 2 : 293T whole cell lysate
- Lane 3 : MCF7 whole cell lysate

Lysates/proteins at 50 µg per lane.

Predicted band size: 84 kDa
Observed band size: 120 kDa

Exposure time: 3 minutes



Detection of Human E4F1 by Western Blot of Immunoprecipitate.
ab70615 at 1µg/ml staining E4F1 in MCF7 whole cell lysates immunoprecipitated using ab70615 at 3µg/mg lysate (1 mg/IP; 20% of IP loaded/lane). Detection: Chemiluminescence with exposure time of 3 minutes

Please note: All products are "FOR RESEARCH USE ONLY. NOT FOR USE IN DIAGNOSTIC PROCEDURES"

Our Abpromise to you: Quality guaranteed and expert technical support

- Replacement or refund for products not performing as stated on the datasheet
- Valid for 12 months from date of delivery
- Response to your inquiry within 24 hours

- We provide support in Chinese, English, French, German, Japanese and Spanish
- Extensive multi-media technical resources to help you
- We investigate all quality concerns to ensure our products perform to the highest standards

If the product does not perform as described on this datasheet, we will offer a refund or replacement. For full details of the Abpromise, please visit <https://www.abcam.cn/abpromise> or contact our technical team.

Terms and conditions

- Guarantee only valid for products bought direct from Abcam or one of our authorized distributors