

### Anti-E2F6 antibody ab53061

★★★★★ [4 Abreviews](#) [9 References](#) [5 图像](#)

#### 概述

产品名称	Anti-E2F6抗体
描述	兔多克隆抗体to E2F6
宿主	Rabbit
经测试应用	适用于: WB, IHC-P
种属反应性	与反应: Mouse, Human
免疫原	Synthetic peptide corresponding to Human E2F6 aa 141-190.
常规说明	<p>The Life Science industry has been in the grips of a reproducibility crisis for a number of years. Abcam is leading the way in addressing this with our range of recombinant monoclonal antibodies and knockout edited cell lines for gold-standard validation. Please check that this product meets your needs before purchasing.</p> <p>If you have any questions, special requirements or concerns, please send us an inquiry and/or contact our Support team ahead of purchase. Recommended alternatives for this product can be found below, along with publications, customer reviews and Q&amp;As</p>

#### 性能

形式	Liquid
存放说明	Shipped at 4°C. Store at +4°C short term (1-2 weeks). Upon delivery aliquot. Store at -20°C. Avoid freeze / thaw cycle.
存储溶液	<p>pH: 7.40</p> <p>Preservative: 0.02% Sodium azide</p> <p>Constituents: 0.87% Sodium chloride, 50% Glycerol (glycerin, glycerine), PBS</p>
纯度	Immunogen affinity purified
纯化说明	The antibody was affinity purified from rabbit antiserum by affinity chromatography using epitope specific immunogen.
克隆	多克隆
同种型	IgG

#### 应用

The Abpromise guarantee

Abpromise™承诺保证使用ab53061于以下的经测试应用

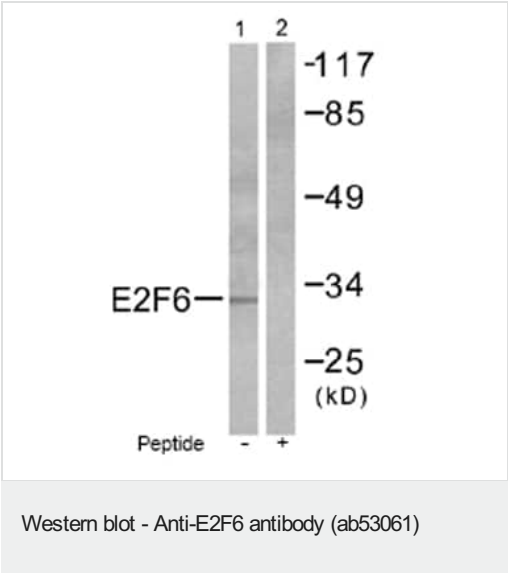
“应用说明”部分 下显示的仅为推荐的起始稀释度;实际最佳的稀释度/浓度应由使用者检定。

应用	Ab评论	说明
WB	★★★★★ (2)	1/500 - 1/1000. Detects a band of approximately 31 kDa (predicted molecular weight: 31 kDa).
IHC-P		1/50 - 1/100.

靶标

功能	Inhibitor of E2F-dependent transcription. Binds DNA cooperatively with DP proteins through the E2 recognition site, 5'-TTTC[CG]CGC-3'. Has a preference for the 5'-TTTCCCGC-3' E2F recognition site. E2F-6 lacks the transcriptional activation and pocket protein binding domains. Appears to regulate a subset of E2F-dependent genes whose products are required for entry into the cell cycle but not for normal cell cycle progression. May silence expression via the recruitment of a chromatin remodeling complex containing histone H3-K9 methyltransferase activity. Overexpression delays the exit of cells from the S-phase.
组织特异性	Expressed in all tissues examined. Highest levels in placenta, skeletal muscle, heart, ovary, kidney, small intestine and spleen.
序列相似性	Belongs to the E2F/DP family.
细胞定位	Nucleus.

图片



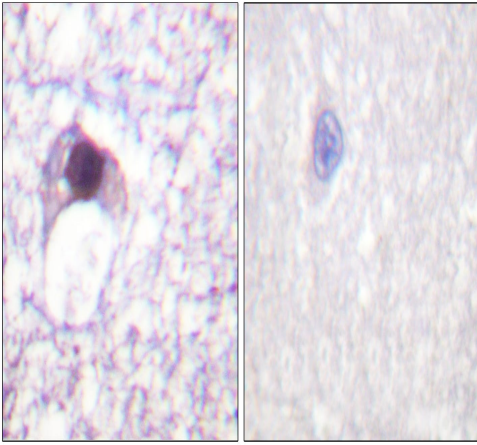
**All lanes :** Anti-E2F6 antibody (ab53061) at 1/500 dilution

**Lane 1 :** Extracts of HepG2 cells

**Lane 2 :** Extracts of HepG2 cells treated with peptide

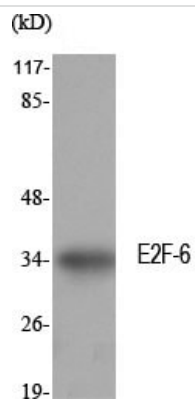
**Predicted band size:** 31 kDa

**Observed band size:** 31 kDa



Immunohistochemistry analysis of paraffin-embedded human brain tissue labeling E2F6 with ab53061. The picture on the right is blocked with the synthesized peptide.

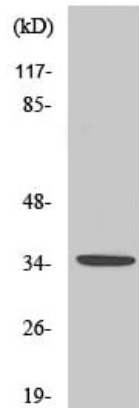
Immunohistochemistry (Formalin/PFA-fixed paraffin-embedded sections) - Anti-E2F6 antibody (ab53061)



Anti-E2F6 antibody (ab53061) at 1/500 dilution + NIH/3T3 cell lysate

**Predicted band size:** 31 kDa

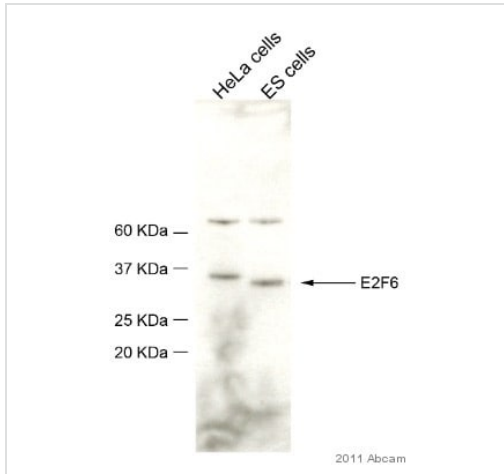
Western blot - Anti-E2F6 antibody (ab53061)



Anti-E2F6 antibody (ab53061) at 1/500 dilution + HepG2 cell lysate

**Predicted band size:** 31 kDa

Western blot - Anti-E2F6 antibody (ab53061)



Western blot - Anti-E2F6 antibody (ab53061)

This image is courtesy of an Abreview submitted by Dr. Ligia Tavares

**All lanes :** Anti-E2F6 antibody (ab53061) at 1/500 dilution (in TBS fro 16 hours at 4°C )

**Lane 1 :** HeLa cells

**Lane 2 :** Cell lysate (nuclear) of mouse embryonic stem cells at 100000 cells

### Secondary

**All lanes :** HRP-conjugated Donkey anti rabbit IgG polyclonal at 1/20000 dilution

Developed using the ECL technique.

Performed under non-reducing conditions.

**Predicted band size:** 31 kDa

**Observed band size:** 35 kDa

**Additional bands at:** 65 kDa. We are unsure as to the identity of these extra bands.

**Exposure time:** 10 minutes

**Blocking Step:** 4% Milk for 1 hour at 22°C

**Please note:** All products are "FOR RESEARCH USE ONLY. NOT FOR USE IN DIAGNOSTIC PROCEDURES"

### Our Abpromise to you: Quality guaranteed and expert technical support

- Replacement or refund for products not performing as stated on the datasheet
- Valid for 12 months from date of delivery
- Response to your inquiry within 24 hours
- We provide support in Chinese, English, French, German, Japanese and Spanish
- Extensive multi-media technical resources to help you
- We investigate all quality concerns to ensure our products perform to the highest standards

If the product does not perform as described on this datasheet, we will offer a refund or replacement. For full details of the Abpromise, please visit <https://www.abcam.cn/abpromise> or contact our technical team.

### Terms and conditions

- Guarantee only valid for products bought direct from Abcam or one of our authorized distributors