


Anti-E2F1 antibody ab94888

4 References 2 图像

| | |
|-------|---|
| 概述 | |
| 产品名称 | Anti-E2F1抗体 |
| 描述 | 兔多克隆抗体to E2F1 |
| 宿主 | Rabbit |
| 经测试应用 | 适用于: WB, IHC-P |
| 种属反应性 | 与反应: Human 预测可用于: Mouse, Rat  |
| 免疫原 | Recombinant fragment, corresponding to amino acids 183-433 of Human E2F1 (NM_005225). |
| 阳性对照 | K562 cell lysate and Human fetal tonsil tissue |
| 常规说明 | <p>The Life Science industry has been in the grips of a reproducibility crisis for a number of years. Abcam is leading the way in addressing this with our range of recombinant monoclonal antibodies and knockout edited cell lines for gold-standard validation. Please check that this product meets your needs before purchasing.</p> <p>If you have any questions, special requirements or concerns, please send us an inquiry and/or contact our Support team ahead of purchase. Recommended alternatives for this product can be found below, along with publications, customer reviews and Q&As</p> |
| 性能 | |
| 形式 | Lyophilized:Reconstitute with 200ul distilled sterile water. Please note that if you receive this product in liquid form it has already been reconstituted as described and no further reconstitution is necessary. |
| 存放说明 | Shipped at 4°C. Upon delivery aliquot and store at -20°C. Avoid repeated freeze / thaw cycles. |
| 存储溶液 | Preservative: 0.02% Sodium azide |
| 纯度 | Protein A purified |
| 克隆 | 多克隆 |
| 同种型 | IgG |
| 应用 | |

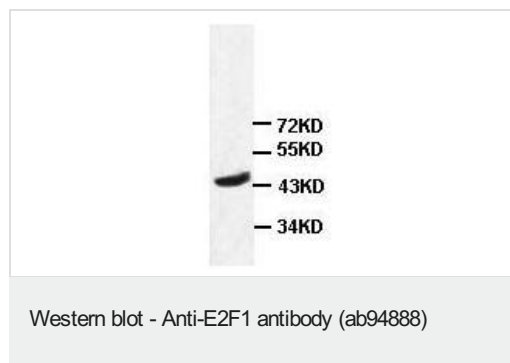
“应用说明”部分 下显示的仅为推荐的起始稀释度;实际最佳的稀释度/浓度应由使用者检定。

| 应用 | Ab评论 | 说明 |
|-------|------|---|
| WB | | 1/500 - 1/1000. Predicted molecular weight: 47 kDa. |
| IHC-P | | 1/50 - 1/200. |

靶标

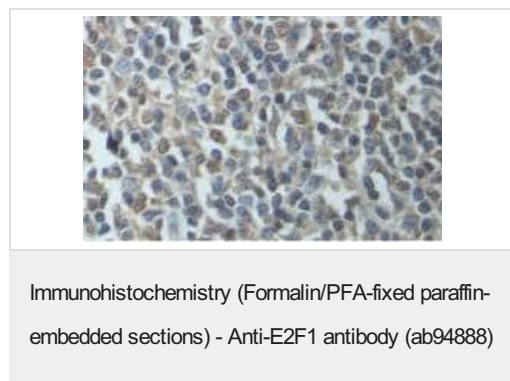
| | |
|-------|---|
| 功能 | Transcription activator that binds DNA cooperatively with dp proteins through the E2 recognition site, 5'-TTTC[CG]CGC-3' found in the promoter region of a number of genes whose products are involved in cell cycle regulation or in DNA replication. The DRTF1/E2F complex functions in the control of cell-cycle progression from G1 to S phase. E2F-1 binds preferentially RB1 protein, in a cell-cycle dependent manner. It can mediate both cell proliferation and p53-dependent apoptosis. |
| 序列相似性 | Belongs to the E2F/DP family. |
| 翻译后修饰 | Phosphorylated by CDK2 and cyclin A-CDK2 in the S-phase. Acetylation stimulates DNA-binding. Enhanced under stress conditions such as DNA damage and inhibited by retinoblastoma protein pRB. Regulated by KAP1/TRIM28 which recruits HDAC1 to E2F1 resulting in deacetylation. Acetylated by P/CAF/KAT2B. |
| 细胞定位 | Nucleus. |

图片



Anti-E2F1 antibody (ab94888) at 1/500 dilution + K562 cell lysate

Predicted band size: 47 kDa



ab94888, at a 1/100 dilution, staining E2F1 in formalin fixed, paraffin embedded Human fetal tonsil tissue by Immunohistochemistry.

Please note: All products are "FOR RESEARCH USE ONLY. NOT FOR USE IN DIAGNOSTIC PROCEDURES"

Our Abpromise to you: Quality guaranteed and expert technical support

- Replacement or refund for products not performing as stated on the datasheet
- Valid for 12 months from date of delivery
- Response to your inquiry within 24 hours
- We provide support in Chinese, English, French, German, Japanese and Spanish
- Extensive multi-media technical resources to help you
- We investigate all quality concerns to ensure our products perform to the highest standards

If the product does not perform as described on this datasheet, we will offer a refund or replacement. For full details of the Abpromise, please visit <https://www.abcam.cn/abpromise> or contact our technical team.

Terms and conditions

- Guarantee only valid for products bought direct from Abcam or one of our authorized distributors