

Anti-DYRK1A antibody ab65220

★★★★★ [3 Abreviews](#) [2 References](#) [2 图像](#)

概述

产品名称	Anti-DYRK1A抗体
描述	兔多克隆抗体to DYRK1A
宿主	Rabbit
经测试应用	适用于: ICC/IF, WB
种属反应性	与反应: Human
免疫原	Synthetic peptide corresponding to Human DYRK1A aa 21-70 (internal sequence). Database link: Q13627
常规说明	<p>The Life Science industry has been in the grips of a reproducibility crisis for a number of years. Abcam is leading the way in addressing this with our range of recombinant monoclonal antibodies and knockout edited cell lines for gold-standard validation. Please check that this product meets your needs before purchasing.</p> <p>If you have any questions, special requirements or concerns, please send us an inquiry and/or contact our Support team ahead of purchase. Recommended alternatives for this product can be found below, along with publications, customer reviews and Q&As</p>

性能

形式	Liquid
存放说明	Shipped at 4°C. Store at -20°C. Stable for 12 months at -20°C.
存储溶液	pH: 7.40 Preservative: 0.02% Sodium azide Constituents: PBS, 50% Glycerol (glycerin, glycerine), 0.87% Sodium chloride
纯度	Without Mg ²⁺ and Ca ²⁺ Immunogen affinity purified
纯化说明	ab65220 was affinity purified from rabbit antiserum by affinity chromatography using epitope specific immunogen.
克隆	多克隆
同种型	IgG

应用

The Abpromise guarantee **Abpromise™**承诺保证使用ab65220于以下的经测试应用

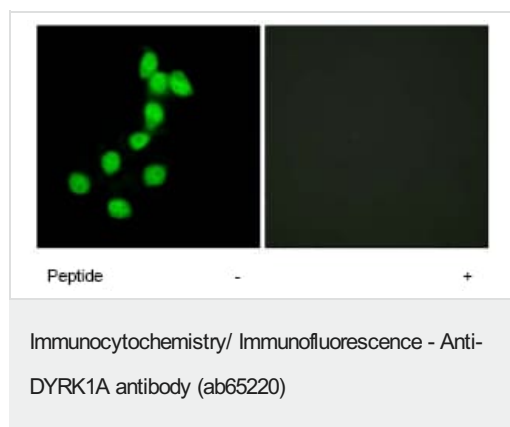
“应用说明”部分 下显示的仅为推荐的起始稀释度;实际最佳的稀释度/浓度应由使用者检定。

应用	Ab评论	说明
ICC/IF		1/500 - 1/1000.
WB	★★★★☆ (2)	1/500 - 1/1000. Detects a band of approximately 86 kDa (predicted molecular weight: 86 kDa).

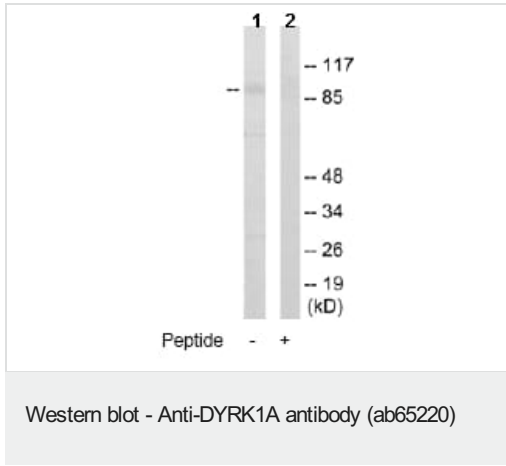
靶标

功能	May play a role in a signaling pathway regulating nuclear functions of cell proliferation. Phosphorylates serine, threonine and tyrosine residues in its sequence and in exogenous substrates.
组织特异性	Ubiquitous. Highest levels in skeletal muscle, testis, fetal lung and fetal kidney.
疾病相关	Defects in DYRK1A are the cause of mental retardation autosomal dominant type 7 (MRD7) [MIM:614104]. A disease characterized by primary microcephaly, severe mental retardation without speech, anxious autistic behavior, and dysmorphic features, including bitemporal narrowing, deep-set eyes, large simple ears, and a pointed nasal tip. Mental retardation is characterized by significantly below average general intellectual functioning associated with impairments in adaptative behavior and manifested during the developmental period.
序列相似性	Belongs to the protein kinase superfamily. CMGC Ser/Thr protein kinase family. MNB/DYRK subfamily. Contains 1 protein kinase domain.
发展阶段	Expressed in the developing central nervous system. Overexpressed 1.5-fold in fetal Down syndrome brain.
结构域	The polyhistidine repeats act as targeting signals to nuclear speckles (PubMed:19266028).
翻译后修饰	Autophosphorylated on tyrosine residues.
细胞定位	Nucleus speckle.

图片



ab65220, at a 1/500 dilution, staining DYRK1A in HepG2 cells by Immunofluorescence, in the absence or presence of the immunising peptide.



All lanes : Anti-DYRK1A antibody (ab65220) at 1/500 dilution

Lane 1 : HepG2 cell extract

Lane 2 : HepG2 cell extract with immunising peptide at 10 µg

Lysates/proteins at 5 µg per lane.

Predicted band size: 86 kDa

Observed band size: 86 kDa

Please note: All products are "FOR RESEARCH USE ONLY. NOT FOR USE IN DIAGNOSTIC PROCEDURES"

Our Abpromise to you: Quality guaranteed and expert technical support

- Replacement or refund for products not performing as stated on the datasheet
- Valid for 12 months from date of delivery
- Response to your inquiry within 24 hours
- We provide support in Chinese, English, French, German, Japanese and Spanish
- Extensive multi-media technical resources to help you
- We investigate all quality concerns to ensure our products perform to the highest standards

If the product does not perform as described on this datasheet, we will offer a refund or replacement. For full details of the Abpromise, please visit <https://www.abcam.cn/abpromise> or contact our technical team.

Terms and conditions

- Guarantee only valid for products bought direct from Abcam or one of our authorized distributors