


Anti-Drebrin antibody ab60933

敲除 验证

★★★★★ [6 Abreviews](#) [9 References](#) [4 图像](#)

概述

产品名称	Anti-Drebrin抗体
描述	兔多克隆抗体to Drebrin
宿主	Rabbit
特异性	<p>Replenishment batches of our polyclonal antibody, ab60933 are tested in WB. Previous batches were additionally validated in ICC/IF and IP. These applications are still expected to work and are covered by our Abpromise guarantee. You may also be interested in our alternative recombinant antibody, ab178408.</p> <p>From Mar 2024, QC testing of replenishment batches of this polyclonal changed. All tested and expected application and reactive species combinations are still covered by our Abcam product promise. However, we no longer test all applications. For more information on a specific batch, please contact our Scientific Support who will be happy to help. You may also be interested in our alternative recombinant antibody, ab178408.</p>
经测试应用	适用于: ICC/IF, WB, IP
种属反应性	与反应: Mouse, Rat, Human 预测可用于: Chicken, Cow, Quail 
免疫原	Synthetic peptide corresponding to Human Drebrin aa 600 to the C-terminus conjugated to keyhole limpet haemocyanin. (Peptide available as ab101313)
阳性对照	WB: SH-SY5Y, SK N SH and SK N BE Whole Cell Lysate, Human, Rat and Mouse Cortex Neuronal cell lysate, Rat and Mouse Hippocampus Tissue Lysate and Malme 3M Whole Cell Lysate. ICC/IF: Primary rat neurons/glia, DIV14 cells.
常规说明	<p>The Life Science industry has been in the grips of a reproducibility crisis for a number of years. Abcam is leading the way in addressing this with our range of recombinant monoclonal antibodies and knockout edited cell lines for gold-standard validation. Please check that this product meets your needs before purchasing.</p> <p>If you have any questions, special requirements or concerns, please send us an inquiry and/or contact our Support team ahead of purchase. Recommended alternatives for this product can be found below, along with publications, customer reviews and Q&As</p>

性能

形式	Liquid
存放说明	Shipped at 4°C. Store at +4°C short term (1-2 weeks). Upon delivery aliquot. Store at -20°C or -80°C. Avoid freeze / thaw cycle.
存储溶液	pH: 7.40 Preservative: 0.02% Sodium azide Constituent: PBS
	Batches of this product that have a concentration < 1mg/ml may have BSA added as a stabilising agent. If you would like information about the formulation of a specific lot, please contact our scientific support team who will be happy to help.
纯度	Immunogen affinity purified
克隆	多克隆
同种型	IgG

应用

The Abpromise guarantee **Abpromise™**承诺保证使用ab60933于以下的经测试应用

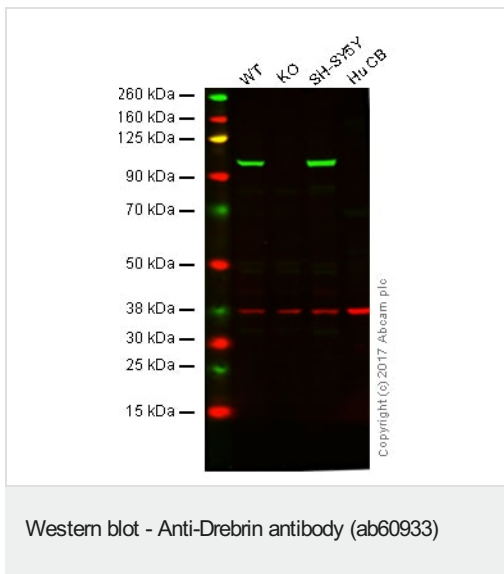
“应用说明”部分 下显示的仅为推荐的起始稀释度;实际最佳的稀释度/浓度应由使用者检定。

应用	Ab评论	说明
ICC/IF		Use a concentration of 1 µg/ml.
WB		Use a concentration of 1 µg/ml. Detects a band of approximately 100 kDa (predicted molecular weight: 71 kDa).
IP		Use at an assay dependent concentration.

靶标

功能	Drebrins might play some role in cell migration, extension of neuronal processes and plasticity of dendrites, respectively.
组织特异性	Brain neurons. Also found in the heart, placenta, skeletal muscle, kidney and pancreas.
序列相似性	Contains 1 ADF-H domain.
细胞定位	Cytoplasm.

图片



Lane 1: Wild-type HAP1 whole cell lysate (20 µg)

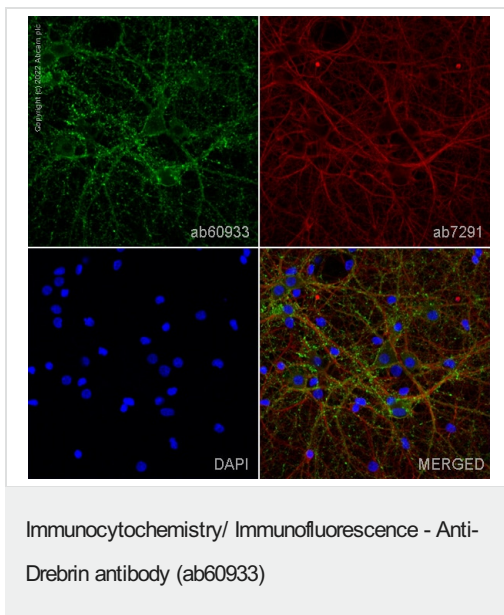
Lane 2: Drebrin knockout HAP1 whole cell lysate (20 µg)

Lane 3: SH-SY5Y whole cell lysate (20 µg)

Lane 4: Hu cerebellum whole cell lysate (20 µg)

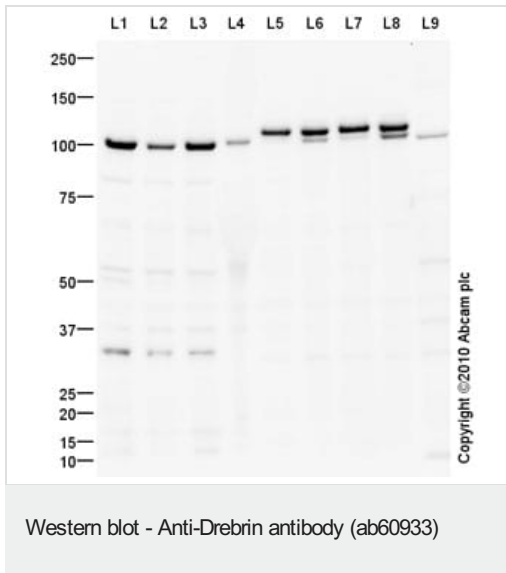
Lanes 1 - 4: Merged signal (red and green). Green - ab60933 observed at 100/120 kDa. Red - loading control, **ab9484**, observed at 37 kDa.

ab60933 was shown to specifically react with Drebrin in wild-type HAP1 cells as signal was lost in Drebrin knockout cells. Wild-type and Drebrin knockout samples were subjected to SDS-PAGE. ab60933 and **ab9484** (Mouse anti-GAPDH loading control) were incubated overnight at 4°C at 1 µg/ml and 1/20000 dilution respectively. Blots were developed with Goat anti-Rabbit IgG H&L (IRDye® 800CW) preabsorbed **ab216773** and Goat anti-Mouse IgG H&L (IRDye® 680RD) preabsorbed **ab216776** secondary antibodies at 1/20000 dilution for 1 hour at room temperature before imaging.



ab60933 staining Drebrin in primary rat neurons/glia, DIV14 (prepared from E18 rat hippocampal brain area, obtained from Transnetyx Tissue by BrainBits, LLC, cat.no. SDHEP) cells. The cells were fixed with 100% methanol (5 min), permeabilized with 0.1% PBS-Tween for 5 minutes and then blocked with 1% BSA/10% normal goat serum/0.3M glycine in 0.1%PBS-Tween for 1h. The cells were then incubated overnight at 4°C with ab60933 at 1µg/ml and **ab7291**, Mouse monoclonal [DM1A] to alpha Tubulin - Loading Control. Cells were then incubated with **ab150081**, Goat polyclonal Secondary Antibody to Rabbit IgG - H&L (Alexa Fluor® 488), pre-adsorbed at 1/1000 dilution (shown in green) and **ab150120**, Goat polyclonal Secondary Antibody to Mouse IgG - H&L (Alexa Fluor® 594), pre-adsorbed at 1/1000 dilution (shown in pseudocolour red). Nuclear DNA was labelled with DAPI (shown in blue).

Image was acquired with a confocal microscope (Leica-Microsystems TCS SP8) and a single confocal section is shown.



All lanes : Anti-Drebrin antibody (ab60933) at 1 µg/ml

Lane 1 : SHSY-5Y (Human neuroblastoma cell line) Whole Cell Lysate

Lane 2 : SK N SH (Human neuroblastoma) Whole Cell Lysate

Lane 3 : SK N BE (Human neuroblastoma) Whole Cell Lysate

Lane 4 : Human Cortex Neuronal cell lysate

Lane 5 : Rat Cortex Neuronal cell lysate

Lane 6 : Mouse Cortex Neuronal cell lysate

Lane 7 : Rat Hippocampus Tissue Lysate

Lane 8 : Mouse Hippocampus Tissue Lysate

Lane 9 : Malme 3M (Human melanoma cells) Whole Cell Lysate

Lysates/proteins at 10 µg per lane.

Secondary

All lanes : Goat Anti-Rabbit IgG H&L (HRP) preadsorbed ([ab97080](#)) at 1/5000 dilution

Developed using the ECL technique.

Performed under reducing conditions.

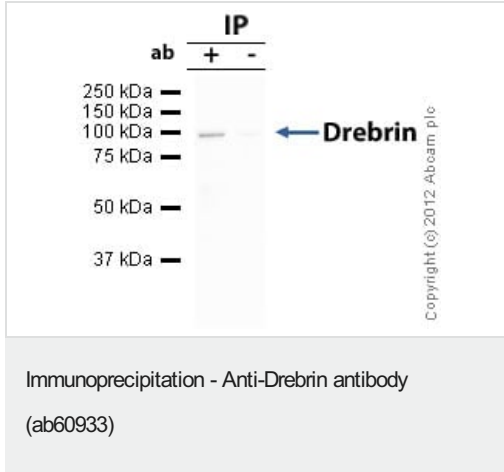
Predicted band size: 71 kDa

Observed band size: 100,120 kDa

Additional bands at: 35 kDa. We are unsure as to the identity of these extra bands.

Exposure time: 2 minutes

The banding pattern observed is consistent with what has been described in the literature (PMID:10234022, 8929425). Drebrin has two isoforms produced by alternative splicing.



Drebrin was immunoprecipitated using 0.5mg SHSY5Y whole cell extract, 5µg of Rabbit polyclonal to Drebrin and 50µl of protein G magnetic beads (+). No antibody was added to the control (-).

The antibody was incubated under agitation with Protein G beads for 10min, SHSY5Y whole cell extract lysate diluted in RIPA buffer was added to each sample and incubated for a further 10min under agitation.

Proteins were eluted by addition of 40µl SDS loading buffer and incubated for 10min at 70°C; 10µl of each sample was separated on a SDS PAGE gel, transferred to a nitrocellulose membrane, blocked with 5% BSA and probed with ab60933.

Secondary: Mouse monoclonal [SB62a] Secondary Antibody to Rabbit IgG light chain (HRP) ([ab99697](#)).

Band: 100kDa: Drebrin.

Please note: All products are "FOR RESEARCH USE ONLY. NOT FOR USE IN DIAGNOSTIC PROCEDURES"

Our Abpromise to you: Quality guaranteed and expert technical support

- Replacement or refund for products not performing as stated on the datasheet
- Valid for 12 months from date of delivery
- Response to your inquiry within 24 hours
- We provide support in Chinese, English, French, German, Japanese and Spanish
- Extensive multi-media technical resources to help you
- We investigate all quality concerns to ensure our products perform to the highest standards

If the product does not perform as described on this datasheet, we will offer a refund or replacement. For full details of the Abpromise, please visit <https://www.abcam.cn/abpromise> or contact our technical team.

Terms and conditions

- Guarantee only valid for products bought direct from Abcam or one of our authorized distributors