

### Anti-Dppa2 antibody ab91318

[2 References](#) [3 图像](#)

#### 概述

<b>产品名称</b>	Anti-Dppa2抗体
<b>描述</b>	兔多克隆抗体to Dppa2
<b>宿主</b>	Rabbit
<b>经测试应用</b>	<b>适用于:</b> ICC, WB
<b>种属反应性</b>	<b>与反应:</b> Mouse
<b>免疫原</b>	Synthetic peptide. This information is proprietary to Abcam and/or its suppliers.
<b>阳性对照</b>	WB: IOUD2, F9, Mouse EG, and E14Tg2a cell lysates; ICC: F9 cells and mouse embryonic stem cells.
<b>常规说明</b>	<p>The Life Science industry has been in the grips of a reproducibility crisis for a number of years. Abcam is leading the way in addressing this with our range of recombinant monoclonal antibodies and knockout edited cell lines for gold-standard validation. Please check that this product meets your needs before purchasing.</p> <p>If you have any questions, special requirements or concerns, please send us an inquiry and/or contact our Support team ahead of purchase. Recommended alternatives for this product can be found below, along with publications, customer reviews and Q&amp;As</p>

#### 性能

<b>形式</b>	Liquid
<b>存放说明</b>	Shipped at 4°C. Store at +4°C short term (1-2 weeks). Upon delivery aliquot. Store at -20°C or -80°C. Avoid freeze / thaw cycle.
<b>存储溶液</b>	pH: 7.40 Preservative: 0.02% Sodium azide Constituent: PBS
<b>纯度</b>	Batches of this product that have a concentration < 1mg/ml may have BSA added as a stabilising agent. If you would like information about the formulation of a specific lot, please contact our scientific support team who will be happy to help.
<b>克隆</b>	Immunogen affinity purified
<b>同种型</b>	多克隆 IgG

## 应用

**The Abpromise guarantee**      **Abpromise™**承诺保证使用ab91318于以下的经测试应用

“应用说明”部分 下显示的仅为推荐的起始稀释度;实际最佳的稀释度/浓度应由使用者检定。

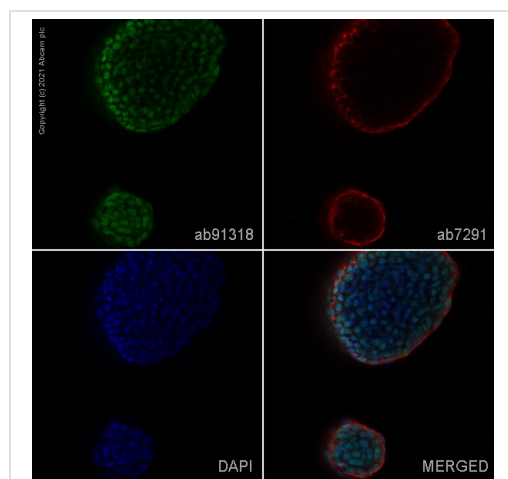
应用	Ab评论	说明
ICC		Use a concentration of 1 µg/ml.
WB		Use a concentration of 1 µg/ml. Detects a band of approximately 37 kDa (predicted molecular weight: 34 kDa).

## 靶标

**相关性**      Dppa2 is a SAP domain protein expressed only in pluripotent cells and the developing germ line.

**细胞定位**      Nuclear

## 图片

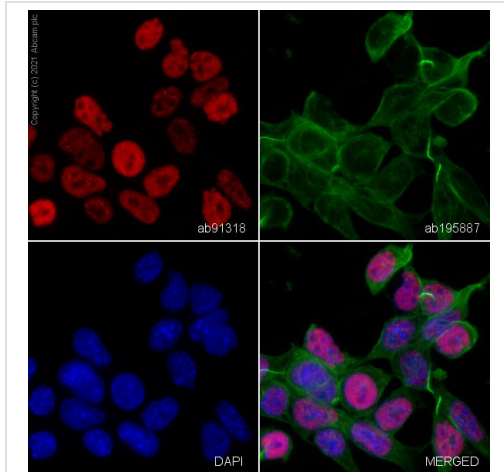


Immunocytochemistry - Anti-Dppa2 antibody  
(ab91318)

ab91318 staining Dppa2 in mES cells. The cells were fixed with 100% methanol (5 min), permeabilized with 0.1% PBS-Tween for 5 minutes and then blocked with 1% BSA/10% normal goat serum/0.3M glycine in 0.1% PBS-Tween for 1h. The cells were then incubated overnight at 4°C with ab91318 at 1µg/ml and **ab7291**, Mouse monoclonal [DM1A] to alpha Tubulin - Loading Control. Cells were then incubated with **ab150081**, Goat polyclonal Secondary Antibody to Rabbit IgG - H&L (Alexa Fluor® 488), pre-adsorbed at 1/1000 dilution (shown in green) and **ab150120**, Goat polyclonal Secondary Antibody to Mouse IgG - H&L (Alexa Fluor® 594), pre-adsorbed at 1/1000 dilution (shown in pseudocolour red). Nuclear DNA was labelled with DAPI (shown in blue).

Also suitable in cells fixed with 4% paraformaldehyde (10 min).

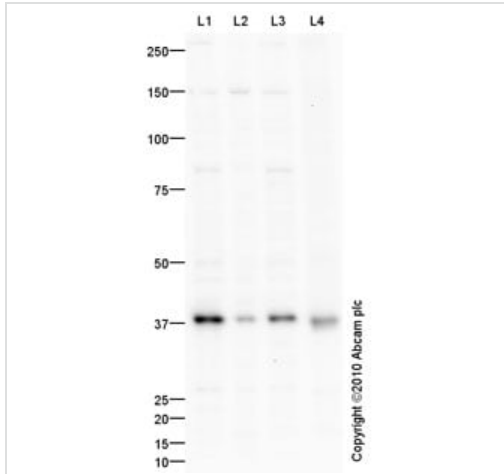
Image was acquired with a confocal microscope (Leica-Microsystems TCS SP8) and a single confocal section is shown.



Immunocytochemistry - Anti-Dppa2 antibody (ab91318)

Immunocytochemistry analysis of F9 (mouse embryonic testicular cancer cell line) labeling Dppa2 with ab91318. The cells were fixed with 4% PFA (10min), permeabilized with 0.1% Triton X-100 for 5 minutes and then blocked with 1% BSA/10% normal goat serum/0.3M glycine in 0.1% PBS-Tween for 1h. The cells were then incubated overnight at +4°C with ab91318 at 1/1000 dilution and **ab195887**, Mouse monoclonal to alpha Tubulin (Alexa Fluor® 488), at 1/250 dilution (shown in green). The secondary antibody (shown in red) was **ab150083** Alexa Fluor® 647 Goat anti-Rabbit IgG (H+L) used at a 1/1000 dilution for 1h. Nuclear DNA was labelled with DAPI (shown in blue).

Image was acquired with a high-content analyser (Operetta CLS, Perkin Elmer) and a maximum intensity projection of confocal sections is shown.



Western blot - Anti-Dppa2 antibody (ab91318)

**All lanes** : Anti-Dppa2 antibody (ab91318) at 1 µg/ml

**Lane 1** : IOUD2 (Mouse embryonic stem cell line) Whole Cell Lysate

**Lane 2** : F9 (Mouse embryonic carcinoma cell line) Whole Cell Lysate

**Lane 3** : Mouse EG (TMAS Embryonic Germ Cells) Whole Cell Lysate

**Lane 4** : E14Tg2a (Mouse embryonic stem cell line) Whole Cell Lysate

Lysates/proteins at 10 µg per lane.

### Secondary

**All lanes** : Goat Anti-Rabbit IgG H&L (HRP) preadsorbed (**ab97080**) at 1/5000 dilution

Developed using the ECL technique.

Performed under reducing conditions.

**Predicted band size:** 34 kDa

**Observed band size:** 37 kDa

**Exposure time:** 3 minutes

**Please note:** All products are "FOR RESEARCH USE ONLY. NOT FOR USE IN DIAGNOSTIC PROCEDURES"

#### **Our Abpromise to you: Quality guaranteed and expert technical support**

---

- Replacement or refund for products not performing as stated on the datasheet
- Valid for 12 months from date of delivery
- Response to your inquiry within 24 hours
  
- We provide support in Chinese, English, French, German, Japanese and Spanish
- Extensive multi-media technical resources to help you
- We investigate all quality concerns to ensure our products perform to the highest standards

If the product does not perform as described on this datasheet, we will offer a refund or replacement. For full details of the Abpromise, please visit <https://www.abcam.cn/abpromise> or contact our technical team.

#### **Terms and conditions**

---

- Guarantee only valid for products bought direct from Abcam or one of our authorized distributors