

Anti-DPP8 antibody ab96470

3 图像

概述

产品名称	Anti-DPP8抗体
描述	兔多克隆抗体to DPP8
宿主	Rabbit
经测试应用	适用于: WB, ICC/IF
种属反应性	与反应: Human
免疫原	Synthetic peptide corresponding to a region within amino acids 1-39 (MAAAMETEQL GVEIFETADC EENIESQDRP KLEPFYVER) of DPP8 (NP_060213; UniProt ID: Q6V1X1 isoform 4). Run BLAST with Expasy Run BLAST with NCBI
阳性对照	WB: A431 whole cell lysate; 293T, H1299 and HepG2 cell lines ICC/IF: HeLa cells
常规说明	<p>The Life Science industry has been in the grips of a reproducibility crisis for a number of years. Abcam is leading the way in addressing this with our range of recombinant monoclonal antibodies and knockout edited cell lines for gold-standard validation. Please check that this product meets your needs before purchasing.</p> <p>If you have any questions, special requirements or concerns, please send us an inquiry and/or contact our Support team ahead of purchase. Recommended alternatives for this product can be found below, along with publications, customer reviews and Q&As</p>

性能

形式	Liquid
存放说明	Shipped at 4°C. Upon delivery aliquot and store at -20°C or -80°C. Avoid repeated freeze / thaw cycles.
存储溶液	pH: 7.00 Preservative: 0.01% Thimerosal (merthiolate) Constituents: 1.21% Tris, 0.75% Glycine, 10% Glycerol (glycerin, glycerine)
纯度	Immunogen affinity purified
克隆	多克隆
同种型	IgG

应用

The Abpromise guarantee Abpromise™承诺保证使用ab96470于以下的经测试应用

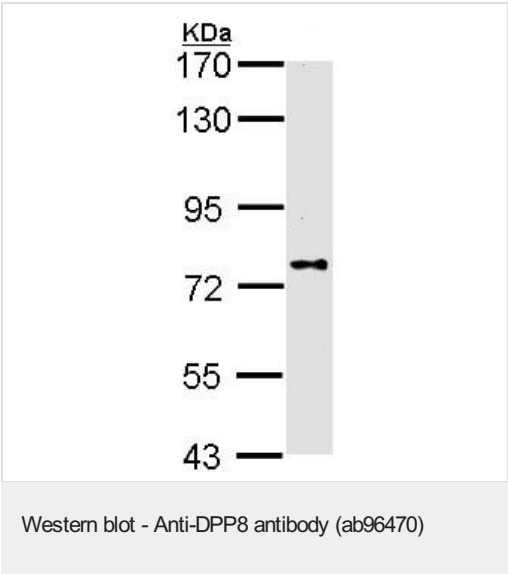
“应用说明”部分 下显示的仅为推荐的起始稀释度;实际最佳的稀释度/浓度应由使用者检定。

应用	Ab评论	说明
WB		1/500 - 1/3000. Predicted molecular weight: 103 kDa.
ICC/IF		1/100 - 1/200.

靶标

功能	Dipeptidyl peptidase that cleaves off N-terminal dipeptides from proteins having a Pro or Ala residue at position 2. May play a role in T-cell activation and immune function.
组织特异性	Ubiquitously expressed, with highest levels in testis, placenta, prostate, muscle and brain.
序列相似性	Belongs to the peptidase S9B family. DPPIV subfamily.
细胞定位	Cytoplasm.

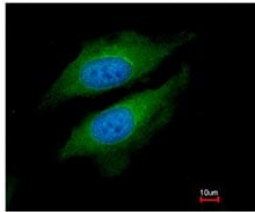
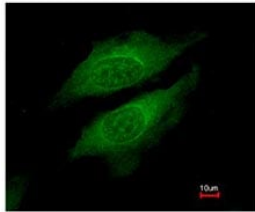
图片



Anti-DPP8 antibody (ab96470) at 1/1000 dilution + A431 whole cell lysate at 30 µg

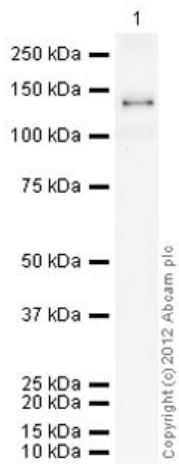
Predicted band size: 103 kDa

7.5% SDS-PAGE



ab96470, at a 1/200 dilution, staining DPP8 in paraformaldehyde fixed HeLa cells by Immunofluorescence.
Lower image is merged with DNA probe.

Immunocytochemistry/ Immunofluorescence - Anti-DPP8 antibody (ab96470)



Western blot - Anti-DPP8 antibody (ab96470)

Please note: All products are "FOR RESEARCH USE ONLY. NOT FOR USE IN DIAGNOSTIC PROCEDURES"

Our Abpromise to you: Quality guaranteed and expert technical support

- Replacement or refund for products not performing as stated on the datasheet

- Valid for 12 months from date of delivery
- Response to your inquiry within 24 hours
- We provide support in Chinese, English, French, German, Japanese and Spanish
- Extensive multi-media technical resources to help you
- We investigate all quality concerns to ensure our products perform to the highest standards

If the product does not perform as described on this datasheet, we will offer a refund or replacement. For full details of the Abpromise, please visit <https://www.abcam.cn/abpromise> or contact our technical team.

Terms and conditions

- Guarantee only valid for products bought direct from Abcam or one of our authorized distributors