

# Anti-DPP6 antibody - Catalytic domain ab41811

★★★★☆ [2 Abreviews](#) [6 References](#) [1 图像](#)

### 概述

产品名称	Anti-DPP6抗体- Catalytic domain
描述	兔多克隆抗体to DPP6 - Catalytic domain
宿主	Rabbit
特异性	This antibody will recognize the three longest forms of DPP6 but not the 353 amino acid form. It will not recognize the other family members.
经测试应用	<b>适用于:</b> WB
种属反应性	<b>与反应:</b> Mouse, Human
免疫原	Synthetic peptide based on the catalytic domain of human DPP6. 参阅Abcam的专有抗源政策 (Peptide available as <a href="#">ab44770</a> .)
常规说明	<p>The Life Science industry has been in the grips of a reproducibility crisis for a number of years. Abcam is leading the way in addressing this with our range of recombinant monoclonal antibodies and knockout edited cell lines for gold-standard validation. Please check that this product meets your needs before purchasing.</p> <p>If you have any questions, special requirements or concerns, please send us an inquiry and/or contact our Support team ahead of purchase. Recommended alternatives for this product can be found below, along with publications, customer reviews and Q&amp;As</p>

### 性能

形式	Liquid
存放说明	Shipped at 4°C. Upon delivery aliquot and store at -20°C. Avoid freeze / thaw cycles.
存储溶液	Preservative: 0.05% Sodium azide Constituent: 50% Glycerol
纯度	Immunogen affinity purified
克隆	多克隆
同种型	IgG

### 应用

The Abpromise guarantee

**Abpromise™**承诺保证使用ab41811于以下的经测试应用

“应用说明”部分 下显示的仅为推荐的起始稀释度;实际最佳的稀释度/浓度应由使用者检定。

应用	Ab评论	说明
WB	★★★★★ (1)	

#### 应用说明

WB: 1/1000 when using colorimetric substrates such as BCIP/NBT, and 1/5000 for chemiluminescent substrates. Predicted molecular weight: 98 kDa. EDTA/EGTA treatment of tissues or lysates is required to see latent zymogen. Dilution optimised using Chromogenic detection. Not yet tested in other applications. Optimal dilutions/concentrations should be determined by the end user.

#### 靶标

#### 功能

Promotes cell surface expression of the potassium channel KCND2 (PubMed:15454437, PubMed:19441798). Modulates the activity and gating characteristics of the potassium channel KCND2 (PubMed:18364354). Has no dipeptidyl aminopeptidase activity (PubMed:8103397, PubMed:15476821).

#### 组织特异性

Expressed predominantly in brain.

#### 疾病相关

Familial paroxysmal ventricular fibrillation 2  
Mental retardation, autosomal dominant 33

#### 序列相似性

Belongs to the peptidase S9B family.

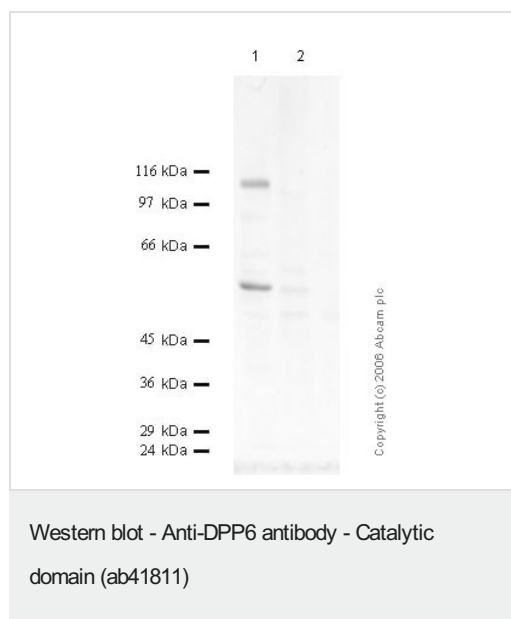
#### 翻译后修饰

N-glycosylated.

#### 细胞定位

Cell membrane.

#### 图片



**All lanes** : Anti-DPP6 antibody - Catalytic domain (ab41811) at 1/1000 dilution

**Lane 1** : Mouse Brain

**Lane 2** : DU145 / IL1-beta Cell media

**Predicted band size:** 98 kDa

**Observed band size:** 105 kDa

**Additional bands at:** 60 kDa (possible truncated form)

**Please note:** All products are "FOR RESEARCH USE ONLY. NOT FOR USE IN DIAGNOSTIC PROCEDURES"

## **Our Abpromise to you: Quality guaranteed and expert technical support**

---

- Replacement or refund for products not performing as stated on the datasheet
- Valid for 12 months from date of delivery
- Response to your inquiry within 24 hours
  
- We provide support in Chinese, English, French, German, Japanese and Spanish
- Extensive multi-media technical resources to help you
- We investigate all quality concerns to ensure our products perform to the highest standards

If the product does not perform as described on this datasheet, we will offer a refund or replacement. For full details of the Abpromise, please visit <https://www.abcam.cn/abpromise> or contact our technical team.

## **Terms and conditions**

---

- Guarantee only valid for products bought direct from Abcam or one of our authorized distributors