

Anti-DPP4 antibody [OT11D7] ab114033

[9 References](#) [4 图像](#)

概述

产品名称	Anti-DPP4抗体[OT11D7]
描述	小鼠单克隆抗体[OT11D7] to DPP4
宿主	Mouse
经测试应用	适用于: WB, IHC-P, Flow Cyt, ICC/IF
种属反应性	与反应: Human, African green monkey
免疫原	Recombinant full length protein corresponding to Human DPP4.
阳性对照	IHC-P: Liver tissue Flow Cyt: Hela cells WB: Transfected HEK293T cell lysate ICC/IF: Transfected COS7 cells
常规说明	<p>The Life Science industry has been in the grips of a reproducibility crisis for a number of years. Abcam is leading the way in addressing this with our range of recombinant monoclonal antibodies and knockout edited cell lines for gold-standard validation. Please check that this product meets your needs before purchasing.</p> <p>If you have any questions, special requirements or concerns, please send us an inquiry and/or contact our Support team ahead of purchase. Recommended alternatives for this product can be found below, along with publications, customer reviews and Q&As</p>

性能

形式	Liquid
存放说明	Shipped at 4°C. Upon delivery aliquot and store at -20°C. Avoid repeated freeze / thaw cycles.
存储溶液	pH: 7.30 Preservative: 0.02% Sodium azide Constituents: 48% PBS, 50% Glycerol, 1% BSA
纯度	IgG fraction
纯化说明	Purified from TCS by affinity chromatography
克隆	单克隆
克隆编号	OT11D7
同种型	IgG1

The Abpromise guarantee **Abpromise™承诺保证使用ab114033于以下的经测试应用**

“应用说明”部分下显示的仅为推荐的起始稀释度;实际最佳的稀释度/浓度应由使用者检定。

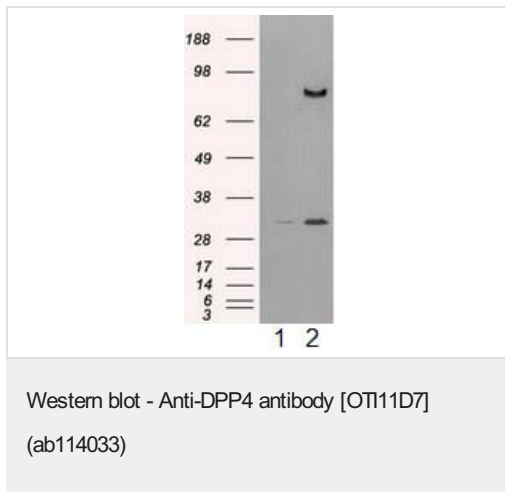
应用	Ab评论	说明
WB		1/500. Predicted molecular weight: 88 kDa.
IHC-P		1/50.
Flow Cyt		1/100. ab170190 - Mouse monoclonal IgG1, is suitable for use as an isotype control with this antibody.
ICC/IF		1/100.

靶标

功能	Cell surface glycoprotein receptor involved in the costimulatory signal essential for T-cell receptor (TCR)-mediated T-cell activation. Acts as a positive regulator of T-cell coactivation, by binding at least ADA, CAV1, IGF2R, and PTPRC. Its binding to CAV1 and CARD11 induces T-cell proliferation and NF-kappa-B activation in a T-cell receptor/CD3-dependent manner. Its interaction with ADA also regulates lymphocyte-epithelial cell adhesion. In association with FAP is involved in the pericellular proteolysis of the extracellular matrix (ECM), the migration and invasion of endothelial cells into the ECM. May be involved in the promotion of lymphatic endothelial cells adhesion, migration and tube formation. When overexpressed, enhanced cell proliferation, a process inhibited by GPC3. Acts also as a serine exopeptidase with a dipeptidyl peptidase activity that regulates various physiological processes by cleaving peptides in the circulation, including many chemokines, mitogenic growth factors, neuropeptides and peptide hormones. Removes N-terminal dipeptides sequentially from polypeptides having unsubstituted N-termini provided that the penultimate residue is proline.
组织特异性	Expressed specifically in lymphatic vessels but not in blood vessels in the skin, small intestine, esophagus, ovary, breast and prostate glands. Not detected in lymphatic vessels in the lung, kidney, uterus, liver and stomach (at protein level). Expressed in the poorly differentiated crypt cells of the small intestine as well as in the mature villous cells. Expressed at very low levels in the colon.
序列相似性	Belongs to the peptidase S9B family. DPPIV subfamily.
结构域	The extracellular cysteine-rich region is necessary for association with collagen, dimer formation and optimal dipeptidyl peptidase activity.
翻译后修饰	The soluble form (Dipeptidyl peptidase 4 soluble form also named SDPP) derives from the membrane form (Dipeptidyl peptidase 4 membrane form also named MDPP) by proteolytic processing. N- and O-Glycosylated. Phosphorylated. Mannose 6-phosphate residues in the carbohydrate moiety are necessary for interaction with IGF2R in activated T-cells. Mannose 6-phosphorylation is induced during T-cell activation.
细胞定位	Cell membrane. Apical cell membrane. Cell projection > invadopodium membrane. Cell projection > lamellipodium membrane. Cell junction. Membrane raft. Translocated to the apical

membrane through the concerted action of N- and O-Glycans and its association with lipid microdomains containing cholesterol and sphingolipids. Redistributed to membrane rafts in T-cell in a interleukin-12-dependent activation. Its interaction with CAV1 is necessary for its translocation to membrane rafts. Colocalized with PTPRC in membrane rafts. Colocalized with FAP in invadopodia and lamellipodia of migratory activated endothelial cells in collagenous matrix. Colocalized with FAP on endothelial cells of capillary-like microvessels but not large vessels within invasive breast ductal carcinoma. Colocalized with ADA at the cell junction in lymphocyte-epithelial cell adhesion. Colocalized with IGF2R in internalized cytoplasmic vesicles adjacent to the cell surface and Secreted. Detected in the serum and the seminal fluid.

图片



All lanes : Anti-DPP4 antibody [OTI11D7] (ab114033) at 1/500 dilution

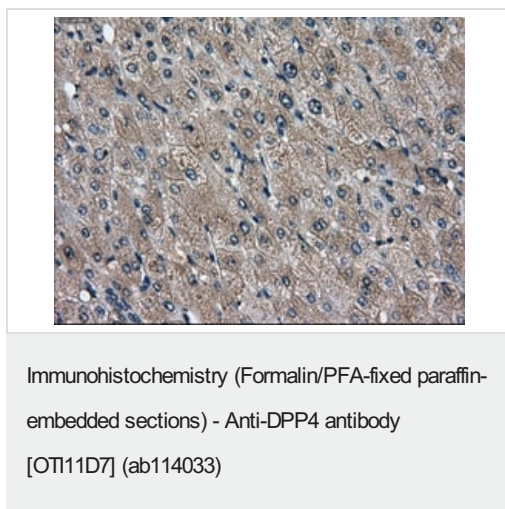
Lane 1 : HEK293T cells were transfected with the pCMV6-ENTRY control cDNA for 48 hrs and lysed

Lane 2 : HEK293T cells were transfected with the pCMV6-ENTRY DPP4 cDNA for 48 hrs and lysed

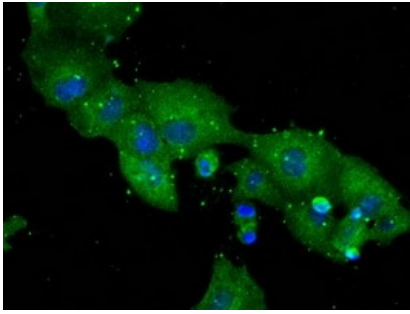
Lysates/proteins at 5 µg per lane.

Predicted band size: 88 kDa

HEK293T cell lysates were generated from transient transfection of the cDNA clone (RC209466)

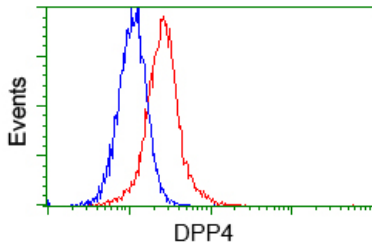


Immunohistochemical staining of paraffin embedded liver tissue using ab114033 at 1/50



Immunofluorescent staining of COS7 cells transiently transfected by pCMV6-ENTRY DPP4, using ab114033 at 1/100

Immunocytochemistry/ Immunofluorescence - Anti-DPP4 antibody [OT111D7] (ab114033)



Flow cytometric analysis of HeLa cells, using ab114033 at 1/100 (Red) compared to a nonspecific negative control antibody (Blue)

Flow Cytometry - Anti-DPP4 antibody [OT111D7] (ab114033)

Please note: All products are "FOR RESEARCH USE ONLY. NOT FOR USE IN DIAGNOSTIC PROCEDURES"

Our Abpromise to you: Quality guaranteed and expert technical support

- Replacement or refund for products not performing as stated on the datasheet
- Valid for 12 months from date of delivery
- Response to your inquiry within 24 hours
- We provide support in Chinese, English, French, German, Japanese and Spanish
- Extensive multi-media technical resources to help you
- We investigate all quality concerns to ensure our products perform to the highest standards

If the product does not perform as described on this datasheet, we will offer a refund or replacement. For full details of the Abpromise, please visit <https://www.abcam.cn/abpromise> or contact our technical team.

Terms and conditions

- Guarantee only valid for products bought direct from Abcam or one of our authorized distributors