




Anti-DPP10 antibody ab111985

3 图像

概述

产品名称	Anti-DPP10抗体
描述	山羊多克隆抗体to DPP10
宿主	Goat
经测试应用	适用于: WB, IHC-P
种属反应性	与反应: Human 预测可用于: Cow, Dog, Pig 
免疫原	Synthetic peptide: C-DEGHNVSEKSKYHL , corresponding to internal sequence amino acids 756-769 of Human DPP10.  Run BLAST with  Run BLAST with
阳性对照	Human brain cerebellum and cortex tissue; Human bone marrow lysate
常规说明	<p>The Life Science industry has been in the grips of a reproducibility crisis for a number of years. Abcam is leading the way in addressing this with our range of recombinant monoclonal antibodies and knockout edited cell lines for gold-standard validation. Please check that this product meets your needs before purchasing.</p> <p>If you have any questions, special requirements or concerns, please send us an inquiry and/or contact our Support team ahead of purchase. Recommended alternatives for this product can be found below, along with publications, customer reviews and Q&As</p>

性能

形式	Liquid
存放说明	Shipped at 4°C. Store at +4°C short term (1-2 weeks). Upon delivery aliquot. Store at -20°C long term.
存储溶液	pH: 7.30 Preservative: 0.02% Sodium azide Constituents: 0.5% BSA, 99% Tris buffered saline
纯度	Immunogen affinity purified
克隆	多克隆
同种型	IgG

应用

The Abpromise guarantee

Abpromise™ 承诺保证使用ab111985于以下的经测试应用

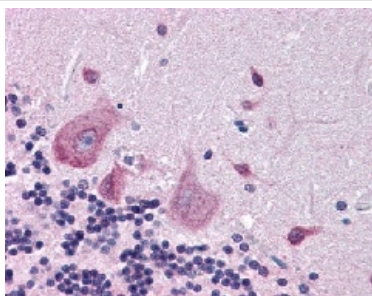
“应用说明”部分 下显示的仅为推荐的起始稀释度;实际最佳的稀释度/浓度应由使用者检定。

应用	Ab评论	说明
WB		Use a concentration of 0.1 - 0.3 µg/ml. Predicted molecular weight: 91 kDa.
IHC-P		Use a concentration of 3.75 µg/ml.

靶标

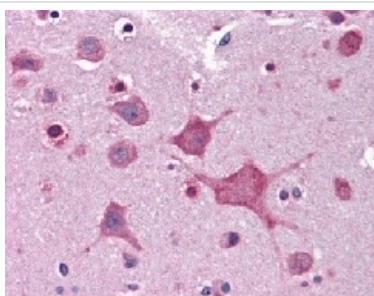
功能	Has no dipeptidyl aminopeptidase activity. May modulate cell surface expression and activity of the potassium channels KCND1 and KCND2.
组织特异性	Found in serum, T-cells and brain (at protein level). Expressed in brain, pancreas, spinal cord and adrenal glands.
疾病相关	Genetic variations in DPP10 are associated with susceptibility to asthma (ASTHMA) [MIM:600807]. The most common chronic disease affecting children and young adults. It is a complex genetic disorder with a heterogeneous phenotype, largely attributed to the interactions among many genes and between these genes and the environment. It is characterized by recurrent attacks of paroxysmal dyspnea, with weezing due to spasmodic contraction of the bronchi.
序列相似性	Belongs to the peptidase S9B family. DPPIV subfamily.
翻译后修饰	N-glycosylated.
细胞定位	Membrane.

图片



Immunohistochemistry (Formalin/PFA-fixed paraffin-embedded sections) - Anti-DPP10 antibody (ab111985)

ab111985, at 3.75 µg/ml, staining DPP10 in formalin-fixed, paraffin-embedded Human brain cerebellum tissue by Immunohistochemistry.



Immunohistochemistry (Formalin/PFA-fixed paraffin-embedded sections) - Anti-DPP10 antibody (ab111985)

ab111985, at 3.75 µg/ml, staining DPP10 in formalin-fixed, paraffin-embedded Human brain cortex tissue by Immunohistochemistry.



Western blot - Anti-DPP10 antibody (ab111985)

Anti-DPP10 antibody (ab111985) at 0.1 µg/ml + Human bone marrow lysate (in RIPA buffer) at 35 µg

Developed using the ECL technique.

Predicted band size: 91 kDa

Primary incubation was 1 hour.

Please note: All products are "FOR RESEARCH USE ONLY. NOT FOR USE IN DIAGNOSTIC PROCEDURES"

Our Abpromise to you: Quality guaranteed and expert technical support

- Replacement or refund for products not performing as stated on the datasheet
- Valid for 12 months from date of delivery
- Response to your inquiry within 24 hours
- We provide support in Chinese, English, French, German, Japanese and Spanish
- Extensive multi-media technical resources to help you
- We investigate all quality concerns to ensure our products perform to the highest standards

If the product does not perform as described on this datasheet, we will offer a refund or replacement. For full details of the Abpromise, please visit <https://www.abcam.cn/abpromise> or contact our technical team.

Terms and conditions

- Guarantee only valid for products bought direct from Abcam or one of our authorized distributors