

# Anti-DPEP1/MDP antibody ab121380

## 2 图像

### 概述

---

产品名称	Anti-DPEP1/MDP抗体
描述	兔多克隆抗体to DPEP1/MDP
宿主	Rabbit
经测试应用	适用于: ICC/IF, IHC-P
种属反应性	与反应: Human
免疫原	Recombinant fragment corresponding to Human DPEP1/MDP aa 136-247.
阳性对照	ICC/IF: Hep G2 IHC: Kidney tissue
常规说明	<p>The Life Science industry has been in the grips of a reproducibility crisis for a number of years. Abcam is leading the way in addressing this with our range of recombinant monoclonal antibodies and knockout edited cell lines for gold-standard validation. Please check that this product meets your needs before purchasing.</p> <p>If you have any questions, special requirements or concerns, please send us an inquiry and/or contact our Support team ahead of purchase. Recommended alternatives for this product can be found below, along with publications, customer reviews and Q&amp;As</p>

### 性能

---

形式	Liquid
存放说明	Shipped at 4°C. Upon delivery aliquot and store at -20°C. Avoid freeze / thaw cycles.
存储溶液	pH: 7.20 Preservative: 0.02% Sodium azide Constituents: 59% PBS, 40% Glycerol (glycerin, glycerine)
纯度	Immunogen affinity purified
克隆	多克隆
同种型	IgG

### 应用

---

**The Abpromise guarantee**      **Abpromise™**承诺保证使用ab121380于以下的经测试应用

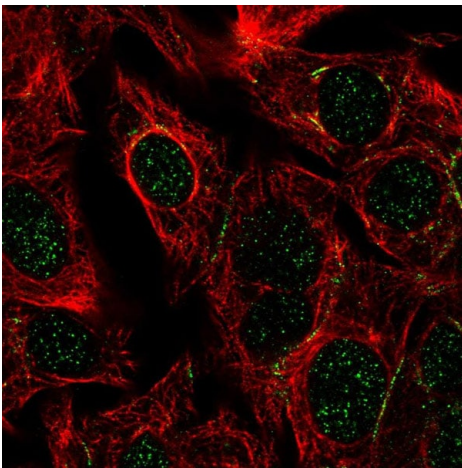
“应用说明”部分下显示的仅为推荐的起始稀释度;实际最佳的稀释度/浓度应由使用者检定。

应用	Ab评论	说明
ICC/IF		Use a concentration of 0.25 - 2 µg/ml.
IHC-P		Use at an assay dependent concentration. Perform heat mediated antigen retrieval with citrate buffer pH 6 before commencing with IHC staining protocol.

## 靶标

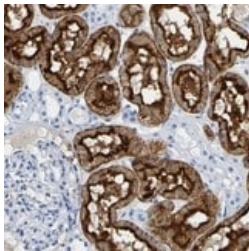
<b>功能</b>	Hydrolyzes a wide range of dipeptides. Implicated in the renal metabolism of glutathione and its conjugates. Converts leukotriene D4 to leukotriene E4; it may play an important role in the regulation of leukotriene activity.
<b>序列相似性</b>	Belongs to the peptidase M19 family.
<b>细胞定位</b>	Apical cell membrane. Cell projection > microvillus membrane. Brush border membrane.

## 图片



Immunocytochemistry/ Immunofluorescence - Anti-DPEP1/MDP antibody (ab121380)

Immunocytochemistry/immunofluorescence analysis of HepG2 cells labelling DPEP1/MDP with ab121380 shows positive staining in the nucleus and cell junctions.



Immunohistochemistry (Formalin/PFA-fixed paraffin-embedded sections) - Anti-DPEP1/MDP antibody (ab121380)

ab121380 staining DPEP1/MDP in Paraffin-embedded Human kidney tissue by Immunohistochemistry.

**Please note:** All products are "FOR RESEARCH USE ONLY. NOT FOR USE IN DIAGNOSTIC PROCEDURES"

### **Our Abpromise to you: Quality guaranteed and expert technical support**

---

- Replacement or refund for products not performing as stated on the datasheet
- Valid for 12 months from date of delivery
- Response to your inquiry within 24 hours
  
- We provide support in Chinese, English, French, German, Japanese and Spanish
- Extensive multi-media technical resources to help you
- We investigate all quality concerns to ensure our products perform to the highest standards

If the product does not perform as described on this datasheet, we will offer a refund or replacement. For full details of the Abpromise, please visit <https://www.abcam.cn/abpromise> or contact our technical team.

### **Terms and conditions**

---

- Guarantee only valid for products bought direct from Abcam or one of our authorized distributors