

Anti-DPAGT1/GPT antibody ab117459

1 References [1 图像](#)

概述

产品名称	Anti-DPAGT1/GPT抗体
描述	兔多克隆抗体to DPAGT1/GPT
宿主	Rabbit
特异性	At least four isoforms of DPAGT1/GPT are known to exist; ab117459 will recognize the two longest isoforms. ab117459 is predicted to not cross-react with UHRF1BP1.
经测试应用	适用于: WB
种属反应性	与反应: Mouse
免疫原	Synthetic peptide corresponding to Human DPAGT1/GPT (N terminal). Database link: Q9H3H5
阳性对照	WB: Mouse kidney tissue lysate.
常规说明	Avoid repeated freeze thaw cycles and exposure to prolonged high temperatures. The Life Science industry has been in the grips of a reproducibility crisis for a number of years. Abcam is leading the way in addressing this with our range of recombinant monoclonal antibodies and knockout edited cell lines for gold-standard validation. Please check that this product meets your needs before purchasing. If you have any questions, special requirements or concerns, please send us an inquiry and/or contact our Support team ahead of purchase. Recommended alternatives for this product can be found below, along with publications, customer reviews and Q&As

性能

形式	Liquid
存放说明	Shipped at 4°C. Store at -20°C. Stable for 12 months at -20°C.
存储溶液	pH: 7.2 Preservative: 0.02% Sodium azide Constituent: 99% PBS
纯度	Immunogen affinity purified
纯化说明	ab117459 was purified by affinity chromatography via a peptide column.
克隆	多克隆
同种型	IgG

应用

The Abpromise guarantee

Abpromise™承诺保证使用ab117459于以下的经测试应用

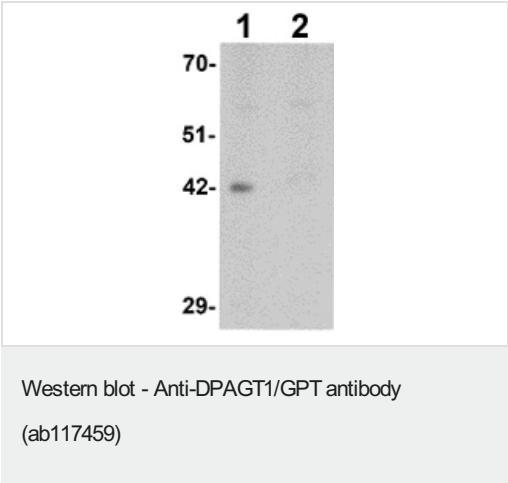
“应用说明”部分 下显示的仅为推荐的起始稀释度;实际最佳的稀释度/浓度应由使用者检定。

应用	Ab评论	说明
WB		Use a concentration of 1 - 2 µg/ml. Predicted molecular weight: 46 kDa.

靶标

功能	Catalyzes the initial step in the synthesis of dolichol-P-P-oligosaccharides.
通路	Protein modification; protein glycosylation.
疾病相关	Defects in DPAGT1 are the cause of congenital disorder of glycosylation type 1J (CDG1J) [MIM:608093]. CDGs are a family of severe inherited diseases caused by a defect in protein N-glycosylation. They are characterized by under-glycosylated serum proteins. These multisystem disorders present with a wide variety of clinical features, such as disorders of the nervous system development, psychomotor retardation, dysmorphic features, hypotonia, coagulation disorders, and immunodeficiency. The broad spectrum of features reflects the critical role of N-glycoproteins during embryonic development, differentiation, and maintenance of cell functions.
序列相似性	Belongs to the glycosyltransferase 4 family.
细胞定位	Endoplasmic reticulum membrane.

图片



All lanes : Anti-DPAGT1/GPT antibody (ab117459) at 1 µg/ml

Lane 1 : Mouse kidney tissue lysate

Lane 2 : Mouse kidney tissue lysate with blocking peptide

Lysates/proteins at 15 µg per lane.

Predicted band size: 46 kDa

Please note: All products are "FOR RESEARCH USE ONLY. NOT FOR USE IN DIAGNOSTIC PROCEDURES"

Our Abpromise to you: Quality guaranteed and expert technical support

- Replacement or refund for products not performing as stated on the datasheet
- Valid for 12 months from date of delivery
- Response to your inquiry within 24 hours
- We provide support in Chinese, English, French, German, Japanese and Spanish
- Extensive multi-media technical resources to help you
- We investigate all quality concerns to ensure our products perform to the highest standards

If the product does not perform as described on this datasheet, we will offer a refund or replacement. For full details of the Abpromise, please visit <https://www.abcam.cn/abpromise> or contact our technical team.

Terms and conditions

- Guarantee only valid for products bought direct from Abcam or one of our authorized distributors