


Anti-DOK6 antibody ab72730

[1 References](#) [2 图像](#)

概述

产品名称	Anti-DOK6抗体
描述	兔多克隆抗体to DOK6
宿主	Rabbit
经测试应用	适用于: WB, ICC/IF
种属反应性	与反应: Human 预测可用于: Mouse 
免疫原	Synthetic peptide derived from an internal sequence within human DOK6.
阳性对照	COLO cell extracts. A549 cells.
常规说明	<p>The Life Science industry has been in the grips of a reproducibility crisis for a number of years. Abcam is leading the way in addressing this with our range of recombinant monoclonal antibodies and knockout edited cell lines for gold-standard validation. Please check that this product meets your needs before purchasing.</p> <p>If you have any questions, special requirements or concerns, please send us an inquiry and/or contact our Support team ahead of purchase. Recommended alternatives for this product can be found below, along with publications, customer reviews and Q&As</p>

性能

形式	Liquid
存放说明	Shipped at 4°C. Store at -20°C. Stable for 12 months at -20°C.
存储溶液	<p>pH: 7.40</p> <p>Preservative: 0.02% Sodium azide</p> <p>Constituents: 50% Glycerol (glycerin, glycerine), 0.87% Sodium chloride, PBS</p>
纯度	Without Mg2+ and Ca2+
克隆	Immunogen affinity purified
同种型	多克隆
	IgG

应用

The Abpromise guarantee

Abpromise™ 承诺保证使用ab72730于以下的经测试应用

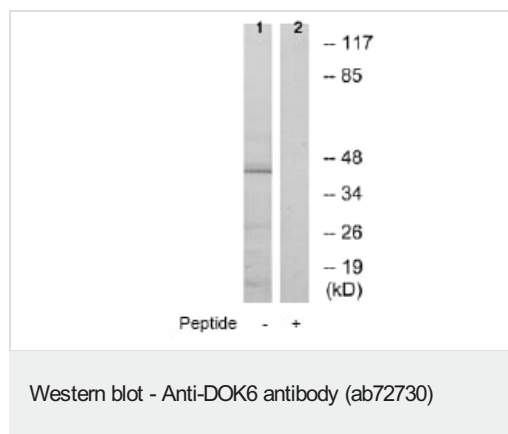
“应用说明”部分 下显示的仅为推荐的起始稀释度;实际最佳的稀释度/浓度应由使用者检定。

应用	Ab评论	说明
WB		1/500 - 1/1000. Detects a band of approximately 38 kDa (predicted molecular weight: 38 kDa).
ICC/IF		1/500 - 1/1000.

靶标

功能	DOK proteins are enzymatically inert adaptor or scaffolding proteins. They provide a docking platform for the assembly of multimolecular signaling complexes. DOK6 promotes Ret-mediated neurite growth. May have a role in brain development and/or maintenance.
组织特异性	Highly expressed in fetal and adult brain. Highly expressed in the cerebellum. Weak expression in kidney, spinal cord and testis.
序列相似性	Belongs to the DOK family. Type B subfamily. Contains 1 IRS-type PTB domain. Contains 1 PH domain.
结构域	PTB domain mediates receptor interaction.
翻译后修饰	On Ret activation, phosphorylated on one or more C-terminal tyrosine residues by an Src family kinase.

图片



All lanes : Anti-DOK6 antibody (ab72730) at 1/500 dilution

Lane 1 : COLO cell extract

Lane 2 : COLO cell extract with immunising peptide at 10 µg

Lysates/proteins at 30 µg per lane.

Predicted band size: 38 kDa

Observed band size: 38 kDa



ab72730 at 1/500 dilution staining DOK6 in A549 cells by Immunofluorescence, in the absence or presence of the immunising peptide.

Please note: All products are "FOR RESEARCH USE ONLY. NOT FOR USE IN DIAGNOSTIC PROCEDURES"

Our Abpromise to you: Quality guaranteed and expert technical support

- Replacement or refund for products not performing as stated on the datasheet
- Valid for 12 months from date of delivery
- Response to your inquiry within 24 hours
- We provide support in Chinese, English, French, German, Japanese and Spanish
- Extensive multi-media technical resources to help you
- We investigate all quality concerns to ensure our products perform to the highest standards

If the product does not perform as described on this datasheet, we will offer a refund or replacement. For full details of the Abpromise, please visit <https://www.abcam.cn/abpromise> or contact our technical team.

Terms and conditions

- Guarantee only valid for products bought direct from Abcam or one of our authorized distributors