

Anti-DOCK8 antibody [EPR12511] ab175208

重组 RabMAb

4 References **5 图像**

概述

产品名称	Anti-DOCK8抗体[EPR12511]
描述	兔单克隆抗体[EPR12511] to DOCK8
宿主	Rabbit
经测试应用	适用于: Flow Cyt (Intra), WB, ICC/IF 不适用于: IHC-P or IP
种属反应性	与反应: Human 不与反应: Mouse, Rat
免疫原	Recombinant fragment within Human DOCK8. The exact sequence is proprietary. Database link: Q8NF50
阳性对照	Raji and THP1 cell lysate
常规说明	This product is a recombinant monoclonal antibody, which offers several advantages including: <ul style="list-style-type: none">- High batch-to-batch consistency and reproducibility- Improved sensitivity and specificity- Long-term security of supply- Animal-free production For more information see here . Our RabMAb [®] technology is a patented hybridoma-based technology for making rabbit monoclonal antibodies. For details on our patents, please refer to RabMAb[®] patents .

性能

形式	Liquid
存放说明	Shipped at 4°C. Store at +4°C short term (1-2 weeks). Upon delivery aliquot. Store at -20°C long term. Avoid freeze / thaw cycle.
存储溶液	pH: 7.20 Preservative: 0.01% Sodium azide Constituents: 9% PBS, 40% Glycerol (glycerin, glycerine), 0.05% BSA, 50% Tissue culture supernatant
纯度	Tissue culture supernatant
克隆	单克隆

克隆编号 EPR12511
同种型 IgG

应用

The Abpromise guarantee **Abpromise™**承诺保证使用ab175208于以下的经测试应用

“应用说明”部分下显示的仅为推荐的起始稀释度;实际最佳的稀释度/浓度应由使用者检定。

应用	Ab评论	说明
Flow Cyt (Intra)		1/10 - 1/100. ab172730 - Rabbit monoclonal IgG, is suitable for use as an isotype control with this antibody.
WB		1/10000 - 1/50000. Predicted molecular weight: 239 kDa.
ICC/IF		1/500. For unpurified use at 1/100 - 1/250

应用说明 Is unsuitable for IHC-P or IP.

靶标

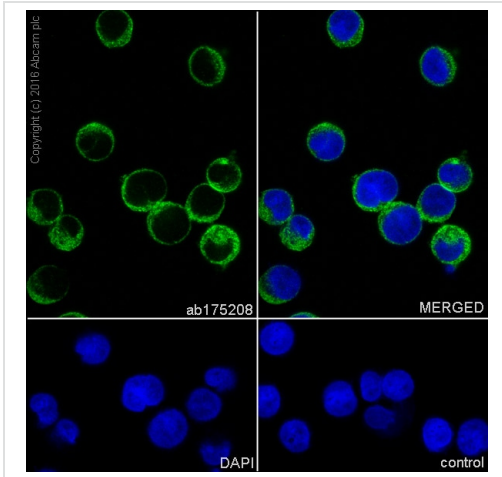
功能 Potential guanine nucleotide exchange factor (GEF). GEF proteins activate some small GTPases by exchanging bound GDP for free GTP.

疾病相关 Defects in DOCK8 are the cause of hyperimmunoglobulin E recurrent infection syndrome autosomal recessive (AR-HIES) [MIM:243700]. It is a rare disorder of immunity characterized by immunodeficiency, recurrent infections, eczema, increased serum IgE, eosinophilia and lack of connective tissue and skeletal involvement.

序列相似性 Belongs to the DOCK family.
Contains 1 DHR-1 (CZH-1) domain.
Contains 1 DHR-2 (CZH-2) domain.

结构域 The DHR-2 domain may mediate some GEF activity.

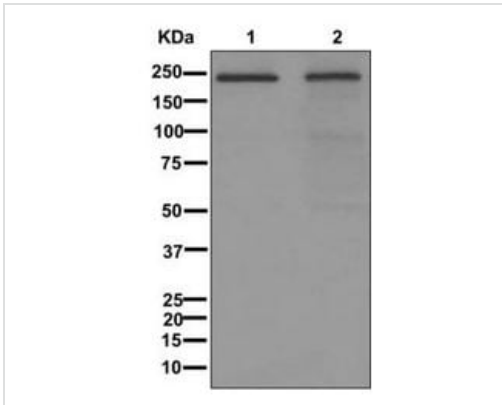
图片



Immunocytochemistry/ Immunofluorescence - Anti-DOCK8 antibody [EPR12511] (ab175208)

Immunocytochemistry/Immunofluorescence analysis of Raji (human Burkitt's lymphoma) cells labelling DOCK8 with purified ab175208 at 1/500. Cells were fixed with 100% methanol. An Alexa Fluor® 488-conjugated goat anti-rabbit IgG ([ab150077](#)) at 1/1000 dilution was used as the secondary antibody. Nuclei counterstained with DAPI (blue).

Secondary Only Control: PBS was used instead of the primary antibody as the negative control.



Western blot - Anti-DOCK8 antibody [EPR12511] (ab175208)

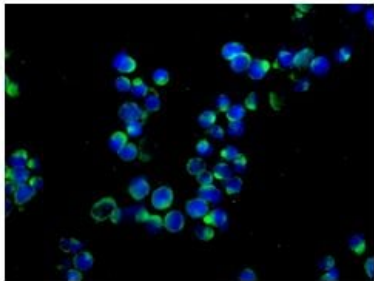
All lanes : Anti-DOCK8 antibody [EPR12511] (ab175208) at 1/10000 dilution

Lane 1 : Raji cell lysate

Lane 2 : THP1 cell lysate

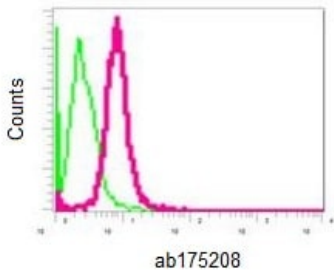
Lysates/proteins at 10 µg per lane.

Predicted band size: 239 kDa



Immunofluorescent staining of Raji cells labeling DOCK8 with ab175208 at 1/100 dilution (green). DAPI nuclear staining (blue).


Immunocytochemistry/ Immunofluorescence - Anti-DOCK8 antibody [EPR12511] (ab175208)





Intracellular flow cytometric analysis of permeabilized THP1 cells labeling DOCK8 with ab175208 at 1/10 dilution (red) compared to a Rabbit IgG (green).


Flow Cytometry (Intracellular) - Anti-DOCK8 antibody [EPR12511] (ab175208)

Why choose a recombinant antibody?

- 

Research with confidence
Consistent and reproducible results
- 

Long-term and scalable supply
Recombinant technology
- 

Success from the first experiment
Confirmed specificity
- 

Ethical standards compliant
Animal-free production

Anti-DOCK8 antibody [EPR12511] (ab175208)

Please note: All products are "FOR RESEARCH USE ONLY. NOT FOR USE IN DIAGNOSTIC PROCEDURES"

Our Abpromise to you: Quality guaranteed and expert technical support

- Replacement or refund for products not performing as stated on the datasheet
- Valid for 12 months from date of delivery
- Response to your inquiry within 24 hours

- We provide support in Chinese, English, French, German, Japanese and Spanish
- Extensive multi-media technical resources to help you
- We investigate all quality concerns to ensure our products perform to the highest standards

If the product does not perform as described on this datasheet, we will offer a refund or replacement. For full details of the Abpromise, please visit <https://www.abcam.cn/abpromise> or contact our technical team.

Terms and conditions

- Guarantee only valid for products bought direct from Abcam or one of our authorized distributors