


Anti-DOCK7 antibody ab118790

2 References **2 图像**

概述

产品名称	Anti-DOCK7抗体
描述	兔多克隆抗体to DOCK7
宿主	Rabbit
经测试应用	适用于: WB, IP
种属反应性	与反应: Human 预测可用于: Rabbit, Horse, Cow, Dog, Pig, Chimpanzee, Rhesus monkey, Gorilla, Orangutan, Platypus 
免疫原	Synthetic peptide corresponding to Human DOCK7 aa 150-250. Database link: Q96N67
常规说明	<p>The Life Science industry has been in the grips of a reproducibility crisis for a number of years. Abcam is leading the way in addressing this with our range of recombinant monoclonal antibodies and knockout edited cell lines for gold-standard validation. Please check that this product meets your needs before purchasing.</p> <p>If you have any questions, special requirements or concerns, please send us an inquiry and/or contact our Support team ahead of purchase. Recommended alternatives for this product can be found below, along with publications, customer reviews and Q&As</p>

性能

形式	Liquid
存放说明	Shipped at 4°C. Upon delivery aliquot and store at -20°C. Avoid freeze / thaw cycles.
存储溶液	<p>pH: 7</p> <p>Preservative: 0.09% Sodium azide</p> <p>Constituent: 99% Tris citrate/phosphate</p>
纯度	pH 7-8 Immunogen affinity purified
纯化说明	ab118790 was affinity purified using an epitope specific to DOCK7 immobilized on solid support.
克隆	多克隆
同种型	IgG

应用

The Abpromise guarantee **Abpromise™**承诺保证使用ab118790于以下的经测试应用

“应用说明”部分 下显示的仅为推荐的起始稀释度;实际最佳的稀释度/浓度应由使用者检定。

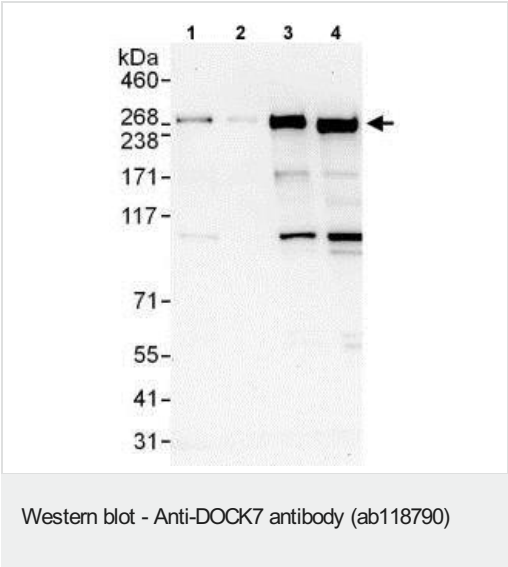
应用	Ab评论	说明
WB		1/2000 - 1/10000. Predicted molecular weight: 243 kDa.
IP		Use at 2-10 µg/mg of lysate.

靶标

相关性 DOCK7 functions as a guanine nucleotide exchange factor (GEF), which activates Rac1 and Rac3 Rho small GTPases by exchanging bound GDP for free GTP. It does not have a GEF activity for CDC42. It is required for STMN1 'Ser-15' phosphorylation during axon formation and consequently for neuronal polarization.

细胞定位 Cell projection, axon. Note=Enriched in the developing axons of hippocampal neurons.

图片



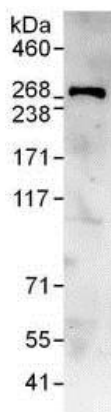
All lanes : Anti-DOCK7 antibody (ab118790) at 0.1 µg/ml

- Lane 1 :** HeLa whole cell lysate at 50 µg
- Lane 2 :** HeLa whole cell lysate at 15 µg
- Lane 3 :** 293T whole cell lysate at 50 µg
- Lane 4 :** Jurkat whole cell lysate at 50 µg

Developed using the ECL technique.

Predicted band size: 243 kDa

Exposure time: 30 seconds



Immunoprecipitation - Anti-DOCK7 antibody
(ab118790)

Detection of DOCK7 in Immunoprecipitates of HeLa whole cell lysate (1 mg for IP, 20% of IP loaded) using ab118790 at 6 µg/mg lysate for IP and at 1 µg/ml for subsequent Western blot detection. Detection: Chemiluminescence with an exposure time of 30 seconds.

Please note: All products are "FOR RESEARCH USE ONLY. NOT FOR USE IN DIAGNOSTIC PROCEDURES"

Our Abpromise to you: Quality guaranteed and expert technical support

- Replacement or refund for products not performing as stated on the datasheet
- Valid for 12 months from date of delivery
- Response to your inquiry within 24 hours
- We provide support in Chinese, English, French, German, Japanese and Spanish
- Extensive multi-media technical resources to help you
- We investigate all quality concerns to ensure our products perform to the highest standards

If the product does not perform as described on this datasheet, we will offer a refund or replacement. For full details of the Abpromise, please visit <https://www.abcam.cn/abpromise> or contact our technical team.

Terms and conditions

- Guarantee only valid for products bought direct from Abcam or one of our authorized distributors