

Anti-DOCK2 antibody [EPR6647] ab124838

重组 RabMAb

1 References [3 图像](#)

概述

产品名称	Anti-DOCK2抗体[EPR6647]
描述	兔单克隆抗体[EPR6647] to DOCK2
宿主	Rabbit
经测试应用	适用于: WB, IHC-P 不适用于: Flow Cyt, ICC/IF or IP
种属反应性	与反应: Human
免疫原	Synthetic peptide. This information is proprietary to Abcam and/or its suppliers.
阳性对照	Jurkat and Raji cell lysates and Human lung tissue.
常规说明	This product is a recombinant monoclonal antibody, which offers several advantages including: <ul style="list-style-type: none">- High batch-to-batch consistency and reproducibility- Improved sensitivity and specificity- Long-term security of supply- Animal-free production For more information see here . Our RabMAb [®] technology is a patented hybridoma-based technology for making rabbit monoclonal antibodies. For details on our patents, please refer to RabMAb[®] patents . Mouse, Rat: We have preliminary internal testing data to indicate this antibody may not react with these species. Please contact us for more information.

性能

形式	Liquid
存放说明	Shipped at 4°C. Store at -20°C. Stable for 12 months at -20°C.
存储溶液	pH: 7.20 Preservative: 0.05% Sodium azide Constituents: 40% Glycerol (glycerin, glycerine), 9.85% Tris glycine, 50% Tissue culture supernatant
纯度	Protein A purified
纯化说明	Not purified; provided in cell supernatant and storage buffer.

克隆 单克隆
克隆编号 EPR6647
同种型 IgG

应用

The Abpromise guarantee **Abpromise™**承诺保证使用ab124838于以下的经测试应用

“应用说明”部分下显示的仅为推荐的起始稀释度;实际最佳的稀释度/浓度应由使用者检定。

应用	Ab评论	说明
WB		1/1000 - 1/10000. Predicted molecular weight: 212 kDa.
IHC-P		1/50 - 1/100. Perform heat mediated antigen retrieval with citrate buffer pH 6 before commencing with IHC staining protocol. Antigen retrieval is not recommended.

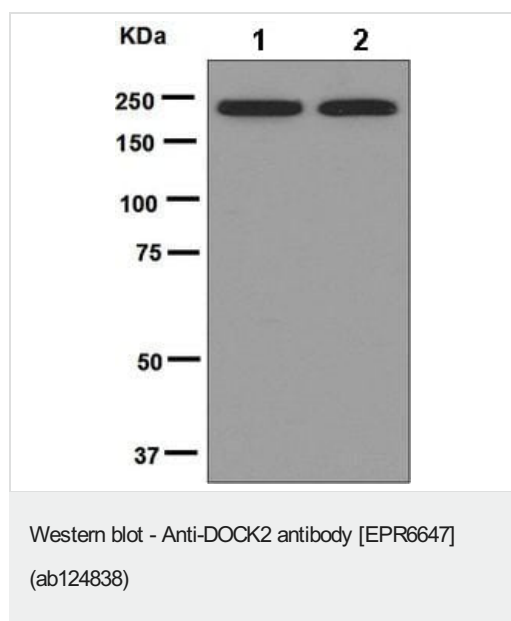
应用说明 Is unsuitable for Flow Cyt, ICC/IF or IP.

靶标

相关性 DOCK2 (dedicator of cytokinesis 2) is a hematopoietic cell-specific protein that participates in the cytoskeletal rearrangements required for lymphocyte migration in response to chemokines. DOCK2 activates the small GTPases RAC1 and RAC2 and may also be involved in IL2 transcriptional activation via the activation of RAC2.

细胞定位 Intracytoplasmic membrane. Peripheral membrane protein. Note=Colocalizes with F-actin.

图片



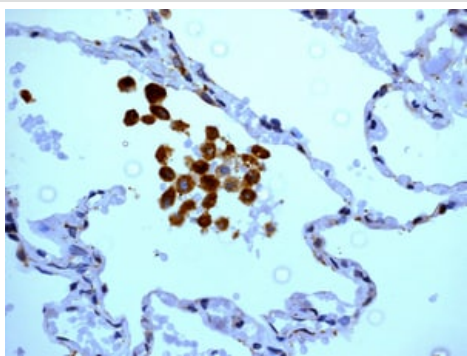
All lanes : Anti-DOCK2 antibody [EPR6647] (ab124838) at 1/1000 dilution

Lane 1 : Jurkat cell lysate

Lane 2 : Raji cell lysate

Lysates/proteins at 10 µg per lane.

Predicted band size: 212 kDa



Immunohistochemistry (Formalin/PFA-fixed paraffin-embedded sections) - Anti-DOCK2 antibody [EPR6647] (ab124838)

ab124838, at 1/50 - 1/100, staining DOCK2 in Human lung tissue by immunohistochemistry [Paraffin Embedded Tissues (IHC-P)].

Perform heat mediated antigen retrieval with citrate buffer pH 6 before commencing with IHC staining protocol.

Why choose a recombinant antibody?



Research with confidence
Consistent and reproducible results



Long-term and scalable supply
Recombinant technology



Success from the first experiment
Confirmed specificity



Ethical standards compliant
Animal-free production

Anti-DOCK2 antibody [EPR6647] (ab124838)

Please note: All products are "FOR RESEARCH USE ONLY. NOT FOR USE IN DIAGNOSTIC PROCEDURES"

Our Abpromise to you: Quality guaranteed and expert technical support

- Replacement or refund for products not performing as stated on the datasheet
- Valid for 12 months from date of delivery
- Response to your inquiry within 24 hours
- We provide support in Chinese, English, French, German, Japanese and Spanish
- Extensive multi-media technical resources to help you
- We investigate all quality concerns to ensure our products perform to the highest standards

If the product does not perform as described on this datasheet, we will offer a refund or replacement. For full details of the Abpromise, please visit <https://www.abcam.cn/abpromise> or contact our technical team.

Terms and conditions

- Guarantee only valid for products bought direct from Abcam or one of our authorized distributors