


Anti-DNA polymerase mu antibody [EPR10470(B)] ab157465

敲除验证
重组
RabMAb

[2 References](#)
[4 图像](#)

概述

产品名称	Anti-DNA polymerase mu抗体[EPR10470(B)]
描述	兔单克隆抗体[EPR10470(B)] to DNA polymerase mu
宿主	Rabbit
经测试应用	适用于: WB 不适用于: Flow Cyt, ICC/IF or IHC-P
种属反应性	与反应: Human 预测可用于: Mouse, Rat 
免疫原	Synthetic peptide. This information is proprietary to Abcam and/or its suppliers.
阳性对照	WB: 293T, HeLa, Daudi and Jurkat cell lysates. IP: Jurkat cell lysate.
常规说明	<p>This product is a recombinant monoclonal antibody, which offers several advantages including:</p> <ul style="list-style-type: none"> - High batch-to-batch consistency and reproducibility - Improved sensitivity and specificity - Long-term security of supply - Animal-free production <p>For more information see here.</p> <p>Our RabMAb[®] technology is a patented hybridoma-based technology for making rabbit monoclonal antibodies. For details on our patents, please refer to RabMAb[®] patents.</p>

性能

形式	Liquid
存放说明	Shipped at 4°C. Store at -20°C.
存储溶液	pH: 7.20 Preservative: 0.01% Sodium azide Constituents: 59% PBS, 40% Glycerol (glycerin, glycerine), 0.05% BSA
纯度	Protein A purified
克隆	单克隆
克隆编号	EPR10470(B)
同种型	IgG

应用

The Abpromise guarantee

Abpromise™承诺保证使用ab157465于以下的经测试应用

“应用说明”部分 下显示的仅为推荐的起始稀释度;实际最佳的稀释度/浓度应由使用者检定。

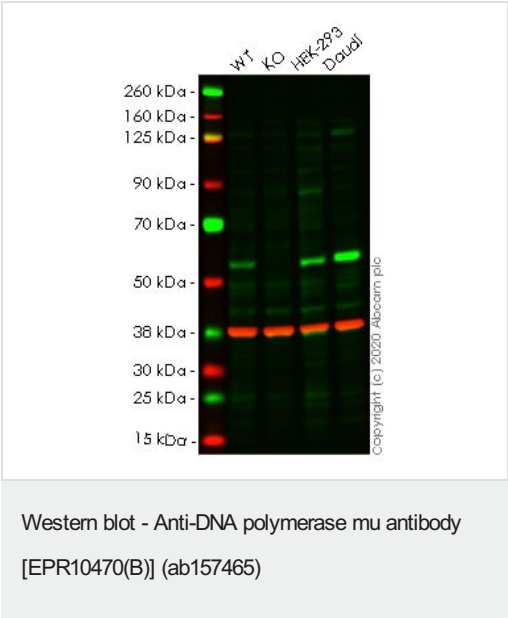
应用	Ab评论	说明
WB		1/1000 - 1/5000. Predicted molecular weight: 55 kDa.

应用说明Is unsuitable for Flow Cyt, ICC/IF or IHC-P.

靶标

功能	Gap-filling polymerase involved in repair of DNA double-strand breaks by non-homologous end joining (NHEJ). Participates in immunoglobulin (Ig) light chain gene rearrangement in V(D)J recombination.
组织特异性	Expressed in a number of tissues. Abundant in thymus.
序列相似性	Belongs to the DNA polymerase type-X family. Contains 1 BRCT domain.
细胞定位	Nucleus.

图片



All lanes : Anti-DNA polymerase mu antibody [EPR10470(B)] (ab157465) at 1/1000 dilution

- Lane 1 : Wild-type HeLa cell lysate
- Lane 2 : POLM knockout HeLa cell lysate
- Lane 3 : HEK-293 cell lysate
- Lane 4 : Daudi cell lysate

Lysates/proteins at 20 µg per lane.

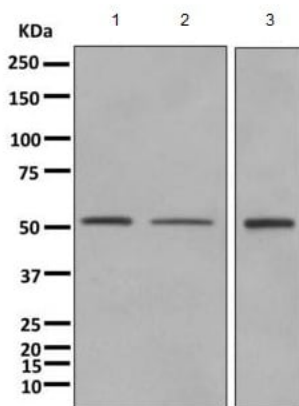
Performed under reducing conditions.

Predicted band size: 55 kDa

Lanes 1-4: Merged signal (red and green). Green - ab157465 observed at 52 kDa. Red - loading control **ab8245** observed at 37 kDa.

ab157465 Anti-DNA polymerase mu antibody [EPR10470(B)] was

shown to specifically react with POLM in wild-type HeLa cells. Loss of signal was observed when knockout cell line **ab265557** (knockout cell lysate **ab258127**) was used. Wild-type and POLM knockout samples were subjected to SDS-PAGE. ab157465 and Anti-GAPDH antibody [6C5] - Loading Control (**ab8245**) were incubated overnight at 4°C at 1 in 1000 dilution and 1 in 20000 dilution respectively. Blots were developed with Goat anti-Rabbit IgG H&L (IRDye® 800CW) preadsorbed (**ab216773**) and Goat anti-Mouse IgG H&L (IRDye® 680RD) preadsorbed (**ab216776**) secondary antibodies at 1 in 20000 dilution for 1 hour at room temperature before imaging.



Western blot - Anti-DNA polymerase mu antibody [EPR10470(B)] (ab157465)

All lanes : Anti-DNA polymerase mu antibody [EPR10470(B)] (ab157465) at 1/1000 dilution

Lane 1 : 293T cell lysate

Lane 2 : HeLa cell lysate

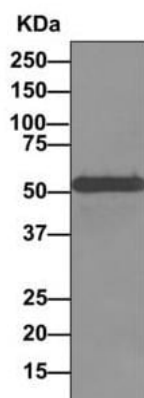
Lane 3 : Jurkat cell lysate

Lysates/proteins at 10 µg per lane.

Secondary

All lanes : HRP labelled goat anti-rabbit at 1/2000 dilution

Predicted band size: 55 kDa



Western blot - Anti-DNA polymerase mu antibody [EPR10470(B)] (ab157465)

Anti-DNA polymerase mu antibody [EPR10470(B)] (ab157465) at 1/1000 dilution + immunoprecipitation pellet from Jurkat cell lysate at 10 µg

Secondary

HRP labelled goat anti-rabbit at 1/2000 dilution

Predicted band size: 55 kDa

Why choose a recombinant antibody?



Research with confidence
Consistent and reproducible results



Long-term and scalable supply
Recombinant technology



Success from the first experiment
Confirmed specificity



Ethical standards compliant
Animal-free production

Anti-DNA polymerase mu antibody [EPR10470(B)]
(ab157465)

Please note: All products are "FOR RESEARCH USE ONLY. NOT FOR USE IN DIAGNOSTIC PROCEDURES"

Our Abpromise to you: Quality guaranteed and expert technical support

- Replacement or refund for products not performing as stated on the datasheet
- Valid for 12 months from date of delivery
- Response to your inquiry within 24 hours
- We provide support in Chinese, English, French, German, Japanese and Spanish
- Extensive multi-media technical resources to help you
- We investigate all quality concerns to ensure our products perform to the highest standards

If the product does not perform as described on this datasheet, we will offer a refund or replacement. For full details of the Abpromise, please visit <https://www.abcam.cn/abpromise> or contact our technical team.

Terms and conditions

- Guarantee only valid for products bought direct from Abcam or one of our authorized distributors