


Anti-DNA Polymerase Kappa/POLK antibody ab86076

1 图像

概述

产品名称	Anti-DNA Polymerase Kappa/POLK抗体
描述	兔多克隆抗体to DNA Polymerase Kappa/POLK
宿主	Rabbit
经测试应用	适用于: WB
种属反应性	与反应: Human 预测可用于: Chimpanzee, Gorilla, Orangutan 
免疫原	Synthetic peptide corresponding to Human DNA Polymerase Kappa/POLK aa 650-750. Database link: Q9UBT6
阳性对照	WB: HeLa or 293T whole cell lysate.
常规说明	<p>The Life Science industry has been in the grips of a reproducibility crisis for a number of years. Abcam is leading the way in addressing this with our range of recombinant monoclonal antibodies and knockout edited cell lines for gold-standard validation. Please check that this product meets your needs before purchasing.</p> <p>If you have any questions, special requirements or concerns, please send us an inquiry and/or contact our Support team ahead of purchase. Recommended alternatives for this product can be found below, along with publications, customer reviews and Q&As</p>

性能

形式	Liquid
存放说明	Shipped at 4°C. Upon delivery aliquot and store at -20°C. Avoid freeze / thaw cycles.
存储溶液	pH: 6.8 Preservative: 0.09% Sodium azide Constituents: 0.1% BSA, Tris buffered saline
纯度	Immunogen affinity purified
克隆	多克隆
同种型	IgG

应用

The Abpromise guarantee

Abpromise™ 承诺保证使用 ab86076 于以下的经测试应用

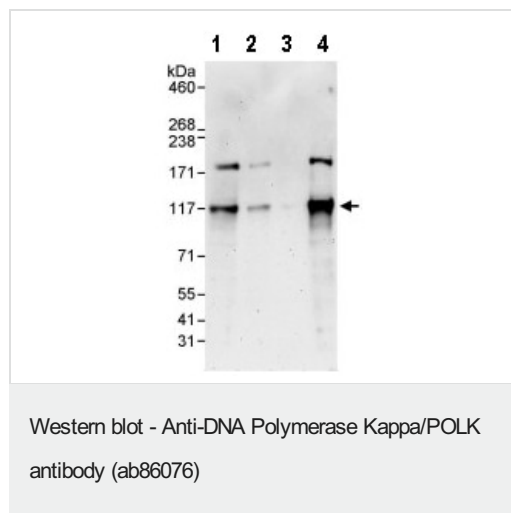
“应用说明”部分 下显示的仅为推荐的起始稀释度; 实际最佳的稀释度/浓度应由使用者检定。

应用	Ab 评论	说明
WB		1/2000 - 1/10000. Predicted molecular weight: 99 kDa.

靶标

功能	DNA polymerase specifically involved in DNA repair. Plays an important role in translesion synthesis, where the normal high-fidelity DNA polymerases cannot proceed and DNA synthesis stalls. Depending on the context, it inserts the correct base, but causes frequent base transitions, transversions and frameshifts. Lacks 3'-5' proofreading exonuclease activity. Forms a Schiff base with 5'-deoxyribose phosphate at abasic sites, but does not have lyase activity.
组织特异性	Detected at low levels in testis, spleen, prostate and ovary. Detected at very low levels in kidney, colon, brain, heart, liver, lung, placenta, pancreas and peripheral blood leukocytes.
序列相似性	Belongs to the DNA polymerase type-Y family. Contains 2 UBZ-type zinc fingers. Contains 1 umuC domain.
结构域	The catalytic core consists of fingers, palm and thumb subdomains, but the fingers and thumb subdomains are much smaller than in high-fidelity polymerases; residues from five sequence motifs of the Y-family cluster around an active site cleft that can accommodate DNA and nucleotide substrates with relaxed geometric constraints, with consequently higher rates of misincorporation and low processivity.
细胞定位	Nucleus. Detected throughout the nucleus and at replication foci.

图片



All lanes : Anti-DNA Polymerase Kappa/POLK antibody (ab86076) at 0.04 µg/ml

Lane 1 : HeLa whole cell lysate at 50 µg

Lane 2 : HeLa whole cell lysate at 15 µg

Lane 3 : HeLa whole cell lysate at 5 µg

Lane 4 : 293T whole cell lysate at 50 µg

Predicted band size: 99 kDa

Detection: chemiluminescence with exposure time of 3 minutes

Please note: All products are "FOR RESEARCH USE ONLY. NOT FOR USE IN DIAGNOSTIC PROCEDURES"

Our Abpromise to you: Quality guaranteed and expert technical support

- Replacement or refund for products not performing as stated on the datasheet
- Valid for 12 months from date of delivery
- Response to your inquiry within 24 hours

- We provide support in Chinese, English, French, German, Japanese and Spanish
- Extensive multi-media technical resources to help you
- We investigate all quality concerns to ensure our products perform to the highest standards

If the product does not perform as described on this datasheet, we will offer a refund or replacement. For full details of the Abpromise, please visit <https://www.abcam.cn/abpromise> or contact our technical team.

Terms and conditions

- Guarantee only valid for products bought direct from Abcam or one of our authorized distributors