


Anti-DNA Polymerase beta antibody [EPR12722(B)] ab175197

重组 RabMAb

★★★★☆ **4 Abreviews** **6 References** **5 图像**

概述

产品名称	Anti-DNA Polymerase beta 抗体 [EPR12722(B)]
描述	兔单克隆抗体[EPR12722(B)] to DNA Polymerase beta
宿主	Rabbit
特异性	The human recommendation is based on the WB results. We do not guarantee IHC-P for human
经测试应用	适用于: ICC/IF, Flow Cyt, IHC-P, WB 不适用于: IP
种属反应性	与反应: Human 预测可用于: Mouse, Rat 
免疫原	Synthetic peptide. This information is proprietary to Abcam and/or its suppliers.
阳性对照	WB: HeLa, Jurkat, K-562, A431, Mouse brain lysate, mouse spleen lysate, rat brain lysate, rat spleen lysate, C6 cell lysate ICC/IF: K-562 (Human chronic myelogenous leukemia lymphoblast) IHC: human lung carcinoma
常规说明	<p>We are constantly working hard to ensure we provide our customers with best in class antibodies. As a result of this work we are pleased to now offer this antibody in purified format. We are in the process of updating our datasheets. The purified format is designated 'PUR' on our product labels. If you have any questions regarding this update, please contact our Scientific Support team.</p> <p>This product is a recombinant monoclonal antibody, which offers several advantages including:</p> <ul style="list-style-type: none">- High batch-to-batch consistency and reproducibility- Improved sensitivity and specificity- Long-term security of supply- Animal-free production <p>For more information see here.</p> <p>Our RabMAb[®] technology is a patented hybridoma-based technology for making rabbit monoclonal antibodies. For details on our patents, please refer to RabMAb[®] patents.</p>

性能

形式	Liquid
存放说明	Shipped at 4°C. Store at +4°C short term (1-2 weeks). Upon delivery aliquot. Store at -20°C long

	term. Avoid freeze / thaw cycle.
存储溶液	pH: 7.20 Preservative: 0.01% Sodium azide Constituents: 59% PBS, 40% Glycerol (glycerin, glycerine), 0.05% BSA
纯度	Protein A purified
克隆	单克隆
克隆编号	EPR12722(B)
同种型	IgG

应用

The Abpromise guarantee

Abpromise™承诺保证使用ab175197于以下的经测试应用

“应用说明”部分 下显示的仅为推荐的起始稀释度;实际最佳的稀释度/浓度应由使用者检定。

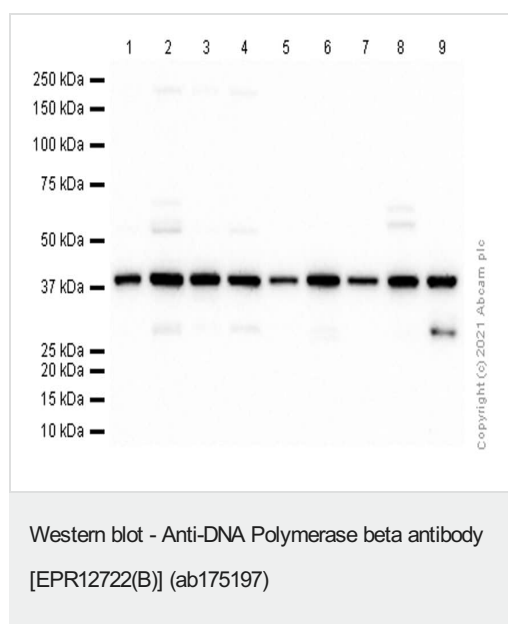
应用	Ab评论	说明
ICC/IF	★★★★★ (1)	1/50.
Flow Cyt		1/200.
IHC-P		1/2000. Perform heat mediated antigen retrieval with citrate buffer pH 6 before commencing with IHC staining protocol. The human recommendation is based on the WB results. We do not guarantee IHC-P for human
WB	★★★★★ (3)	1/1000. Predicted molecular weight: 38 kDa.

应用说明	Is unsuitable for IP.
------	-----------------------

靶标

功能	Repair polymerase. Conducts "gap-filling" DNA synthesis in a stepwise distributive fashion rather than in a processive fashion as for other DNA polymerases. Has a 5'-deoxyribose-5-phosphate lyase (dRP lyase) activity.
序列相似性	Belongs to the DNA polymerase type-X family.
结构域	Residues 239-252 form a flexible loop which appears to affect the polymerase fidelity.
翻译后修饰	Methylation by PRMT6 stimulates the polymerase activity by enhancing DNA binding and processivity.
细胞定位	Nucleus, Cytoplasm

图片



Lanes 1-7 : Anti-DNA Polymerase beta antibody [EPR12722(B)] (ab175197) at 1/1000 dilution (Purified)

Lanes 8-9 : Anti-DNA Polymerase beta antibody [EPR12722(B)] (ab175197) at 1/1000 dilution

Lane 1 : HeLa (Human cervix adenocarcinoma epithelial cell) whole cell lysate

Lane 2 : Jurkat (Human T cell leukemia T lymphocyte) whole cell lysate

Lane 3 : K-562 (Human chronic myelogenous leukemia lymphoblast) whole cell lysate

Lane 4 : A431 (Human epidermoid carcinoma epithelial cell) whole cell lysate

Lane 5 : Mouse brain lysate

Lane 6 : Mouse spleen lysate

Lane 7 : Rat brain lysate

Lane 8 : Rat spleen lysate

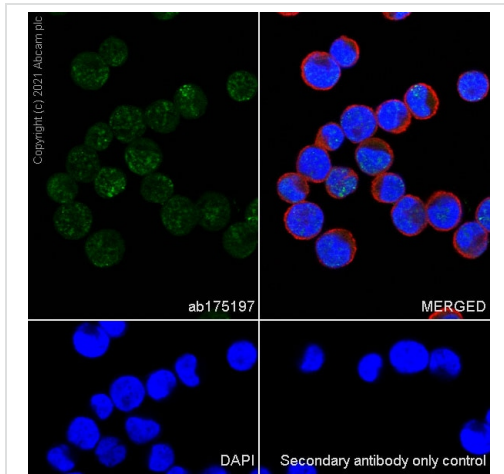
Lane 9 : C6 (Rat glial tumor glial cell) whole cell lysate

Secondary

All lanes : Goat Anti-Rabbit IgG H&L (HRP) ([ab97051](#)) at 1/20000 dilution

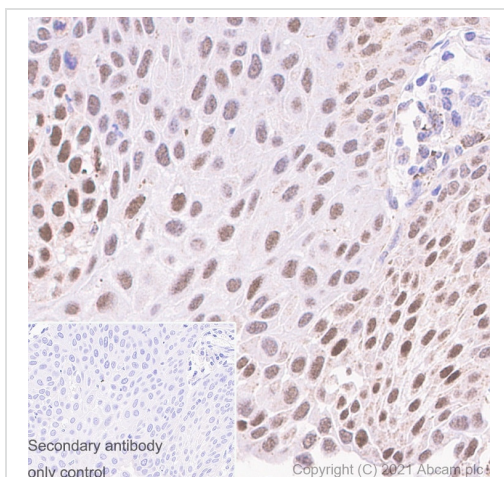
Predicted band size: 38 kDa

Observed band size: 38 kDa



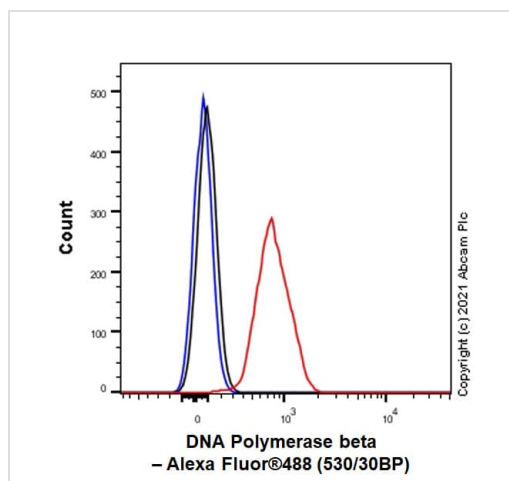
Immunocytochemistry/ Immunofluorescence - Anti-DNA Polymerase beta antibody [EPR12722(B)] (ab175197)

Immunocytochemistry analysis of K-562 (Human chronic myelogenous leukemia lymphoblast) cells labeling DNA Polymerase beta with Purified ab175197 at 1:50 dilution (3.1 μ g/ml). Cells were fixed in 100% Methanol and permeabilized with 0.1% tritonX-100. Cells were counterstained with Ab195889 Anti-alpha Tubulin antibody [DM1A] - Microtubule Marker (Alexa Fluor® 594) 1:200 (2.5 μ g/ml). Goat anti rabbit IgG (Alexa Fluor® 488, **ab150077**) was used as the secondary antibody at 1:1000 (2 μ g/ml) dilution. DAPI (blue) was used as nuclear counterstain. PBS instead of the primary antibody was used as the secondary antibody only control.



Immunohistochemistry (Formalin/PFA-fixed paraffin-embedded sections) - Anti-DNA Polymerase beta antibody [EPR12722(B)] (ab175197)


Immunohistochemistry (Formalin/PFA-fixed paraffin-embedded sections) analysis of human lung carcinoma tissue sections labeling with Purified ab175197 at 1:500 dilution (0.31 μ g/ml). Heat mediated antigen retrieval was performed using Heat mediated antigen retrieval using Bond™ Epitope Retrieval Solution 2 (pH 9.0). Tissue was counterstained with Hematoxylin. Rabbit specific IHC polymer detection kit HRP/DAB (**ab209101**) secondary antibody was used at 1:0 dilution. PBS instead of the primary antibody was used as the negative control. M3



Flow Cytometry - Anti-DNA Polymerase beta antibody [EPR12722(B)] (ab175197)

Flow Cytometry analysis of A431 (Human epidermoid carcinoma epithelial cell) cells labelling DNA Polymerase beta with Purified ab175197 at 1:200 dilution (1 µg/ml) (Red). Cells were fixed with 4% Paraformaldehyde and permeabilised with 90% Methanol. A Goat anti rabbit IgG (Alexa Fluor™ 488, **ab150077**) secondary antibody was used at 1:2000. Isotype control - Rabbit monoclonal IgG (Black). Unlabelled control - Cell without incubation with primary antibody and secondary antibody (Blue).

Why choose a recombinant antibody?

 <p>Research with confidence Consistent and reproducible results</p>	 <p>Long-term and scalable supply Recombinant technology</p>
 <p>Success from the first experiment Confirmed specificity</p>	 <p>Ethical standards compliant Animal-free production</p>

Anti-DNA Polymerase beta antibody [EPR12722(B)] (ab175197)

Please note: All products are "FOR RESEARCH USE ONLY. NOT FOR USE IN DIAGNOSTIC PROCEDURES"

Our Abpromise to you: Quality guaranteed and expert technical support

- Replacement or refund for products not performing as stated on the datasheet
- Valid for 12 months from date of delivery
- Response to your inquiry within 24 hours
- We provide support in Chinese, English, French, German, Japanese and Spanish
- Extensive multi-media technical resources to help you
- We investigate all quality concerns to ensure our products perform to the highest standards

If the product does not perform as described on this datasheet, we will offer a refund or replacement. For full details of the Abpromise, please visit <https://www.abcam.cn/abpromise> or contact our technical team.

Terms and conditions

- Guarantee only valid for products bought direct from Abcam or one of our authorized distributors