

Anti-DLL1 antibody ab85346

★★★★★ [1 Abreviews](#) [9 References](#) [1 图像](#)

概述

产品名称	Anti-DLL1抗体
描述	山羊多克隆抗体to DLL1
宿主	Goat
经测试应用	适用于: ICC/IF, WB
种属反应性	与反应: Mouse, Rat, Human 预测可用于: Chicken, Xenopus laevis, Zebrafish 
免疫原	Synthetic peptide: C-ATQRHLTVGEEWSQD , corresponding to internal sequence amino acids 148-162 of Human DLL1 (NP_005609.3) Run BLAST with Run BLAST with
常规说明	<p>The Life Science industry has been in the grips of a reproducibility crisis for a number of years. Abcam is leading the way in addressing this with our range of recombinant monoclonal antibodies and knockout edited cell lines for gold-standard validation. Please check that this product meets your needs before purchasing.</p> <p>If you have any questions, special requirements or concerns, please send us an inquiry and/or contact our Support team ahead of purchase. Recommended alternatives for this product can be found below, along with publications, customer reviews and Q&As</p>

性能

形式	Liquid
存放说明	Shipped at 4°C. Upon delivery aliquot and store at -20°C. Avoid repeated freeze / thaw cycles.
存储溶液	pH: 7.30 Preservative: 0.02% Sodium azide Constituents: 0.5% BSA, Tris buffered saline
纯度	Immunogen affinity purified
纯化说明	ab85346 was purified from goat serum by ammonium sulphate precipitation followed by antigen affinity chromatography using the immunizing peptide.
克隆	多克隆
同种型	IgG

应用

The Abpromise guarantee **Abpromise™**承诺保证使用ab85346于以下的经测试应用

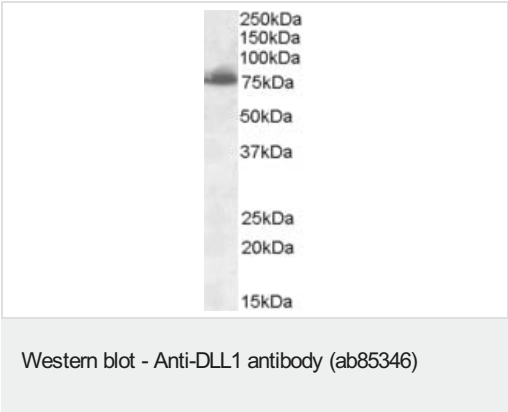
“应用说明”部分 下显示的仅为推荐的起始稀释度;实际最佳的稀释度/浓度应由使用者检定。

应用	Ab评论	说明
ICC/IF	★★★★★ (1)	Use at an assay dependent concentration.
WB		Use a concentration of 0.3 - 1 µg/ml. Detects a band of approximately 78 kDa (predicted molecular weight: 78 kDa). 1 hour primary incubation is recommended for this product.

靶标

功能	Acts as a ligand for Notch receptors. Blocks the differentiation of progenitor cells into the B-cell lineage while promoting the emergence of a population of cells with the characteristics of a T-cell/NK-cell precursor.
组织特异性	Expressed in heart and pancreas, with lower expression in brain and muscle and almost no expression in placenta, lung, liver and kidney.
序列相似性	Contains 1 DSL domain. Contains 8 EGF-like domains.
翻译后修饰	Ubiquitinated by MIB (MIB1 or MIB2), leading to its endocytosis and subsequent degradation.
细胞定位	Membrane.

图片



Anti-DLL1 antibody (ab85346) at 0.3 µg/ml + Rat Heart lysate at 35 µg

Predicted band size: 78 kDa
Observed band size: 78 kDa

Please note: All products are "FOR RESEARCH USE ONLY. NOT FOR USE IN DIAGNOSTIC PROCEDURES"

Our Abpromise to you: Quality guaranteed and expert technical support

- Replacement or refund for products not performing as stated on the datasheet
- Valid for 12 months from date of delivery
- Response to your inquiry within 24 hours

- We provide support in Chinese, English, French, German, Japanese and Spanish
- Extensive multi-media technical resources to help you
- We investigate all quality concerns to ensure our products perform to the highest standards

If the product does not perform as described on this datasheet, we will offer a refund or replacement. For full details of the Abpromise, please visit <https://www.abcam.cn/abpromise> or contact our technical team.

Terms and conditions

- Guarantee only valid for products bought direct from Abcam or one of our authorized distributors