

### Anti-DLL1 antibody ab10554

★★★★★ [2 Abreviews](#) [21 References](#) [4 图像](#)

#### 概述

产品名称	Anti-DLL1抗体
描述	兔多克隆抗体to DLL1
宿主	Rabbit
经测试应用	适用于: IHC-P, WB, ICC/IF, IHC-Fr, IHC-FoFr
种属反应性	与反应: Mouse, Rat, Human 预测可用于: Chicken 
免疫原	Synthetic peptide: CGEEWSQDLHSSGRTDLRYS conjugated to KLH, corresponding to amino acids 155-173 of Mouse Delta-1. <a href="#"> Run BLAST with</a> <a href="#"> Run BLAST with</a>
常规说明	<p>The Life Science industry has been in the grips of a reproducibility crisis for a number of years. Abcam is leading the way in addressing this with our range of recombinant monoclonal antibodies and knockout edited cell lines for gold-standard validation. Please check that this product meets your needs before purchasing.</p> <p>If you have any questions, special requirements or concerns, please send us an inquiry and/or contact our Support team ahead of purchase. Recommended alternatives for this product can be found below, along with publications, customer reviews and Q&amp;As</p>

#### 性能

形式	Liquid
存放说明	Shipped at 4°C. Upon delivery aliquot and store at -20°C or -80°C. Avoid repeated freeze / thaw cycles.
存储溶液	Preservative: 0.01% Sodium azide Constituents: 0.42% Potassium phosphate, 0.87% Sodium chloride
纯度	Immunogen affinity purified
纯化说明	This is an affinity purified antibody produced by immunoaffinity chromatography using the immunizing peptide after immobilization to a solid phase. The product is sterile, filtered.
克隆	多克隆
同种型	IgG

应用

The Abpromise guarantee      **Abpromise™**承诺保证使用ab10554于以下的经测试应用

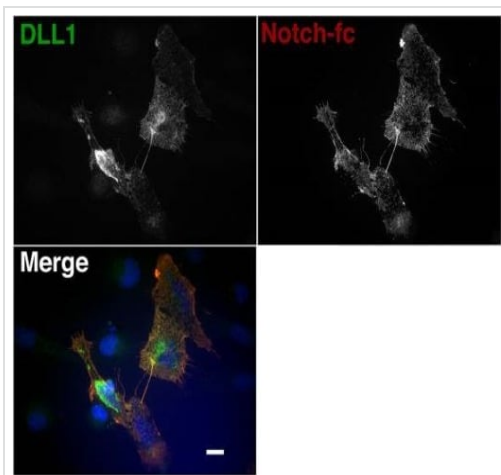
“应用说明”部分 下显示的仅为推荐的起始稀释度;实际最佳的稀释度/浓度应由使用者检定。

应用	Ab评论	说明
IHC-P	★★★★☆ (1)	Use at an assay dependent concentration.
WB		1/100 - 1/1000. Predicted molecular weight: 78 kDa.
ICC/IF		Use at an assay dependent concentration.
IHC-Fr	★★★★★ (1)	Use at an assay dependent concentration.
IHC-FoFr		Use at an assay dependent concentration.

靶标

功能	Acts as a ligand for Notch receptors. Blocks the differentiation of progenitor cells into the B-cell lineage while promoting the emergence of a population of cells with the characteristics of a T-cell/NK-cell precursor.
组织特异性	Expressed in heart and pancreas, with lower expression in brain and muscle and almost no expression in placenta, lung, liver and kidney.
序列相似性	Contains 1 DSL domain. Contains 8 EGF-like domains.
翻译后修饰	Ubiquitinated by MIB (MIB1 or MIB2), leading to its endocytosis and subsequent degradation.
细胞定位	Membrane.

图片

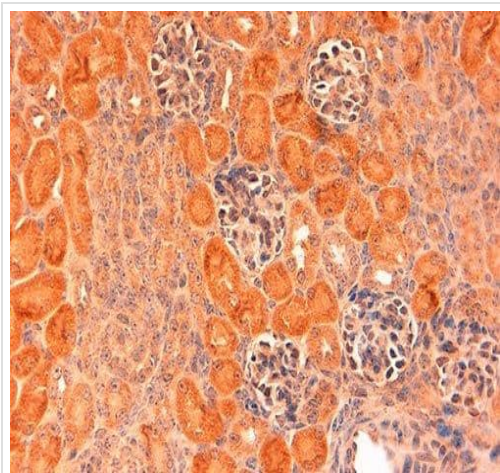


Immunocytochemistry/ Immunofluorescence - Anti-DLL1 antibody (ab10554)

Greene Met al., PLoS One, 2016 Sep 13;11(9):e0161157. Fig 1.; doi: 10.1371/journal.pone.0161157 Reproduced under the Creative Commons license <http://creativecommons.org/licenses/by/4.0/>

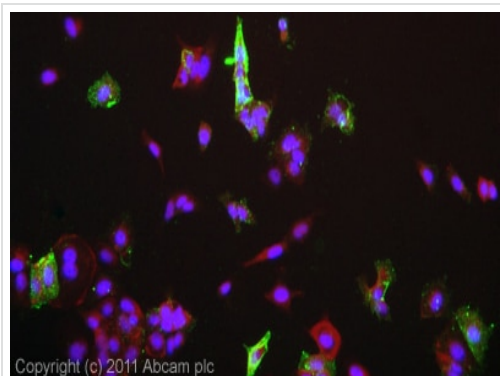
ab10554 staining DLL1 in U2OS cells by ICC/IF

(Immunocytochemistry/immunofluorescence). Cells were fixed with 4% paraformaldehyde, permeabilized with 0.3% Triton X-100 in PBS and blocked with 4% BSA for 1 hour. Samples were incubated with primary antibody for 1 hour at room temperature. DAPI used to stain nuclei



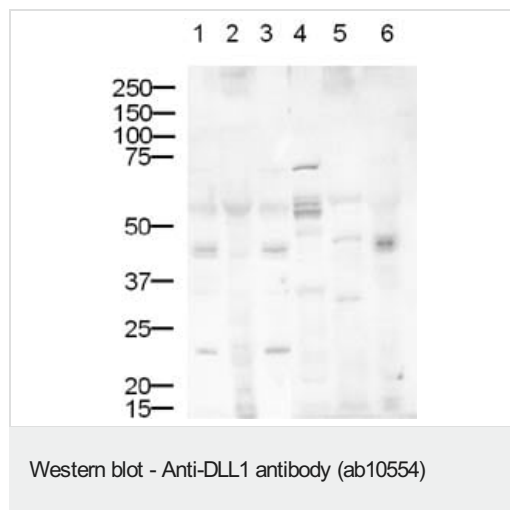
Immunohistochemistry (Formalin/PFA-fixed paraffin-embedded sections) - Anti-DLL1 antibody (ab10554)

ab10554 staining DLL1 in Mouse embryonic kidney tissue sections by Immunohistochemistry (IHC-P - paraformaldehyde-fixed, paraffin-embedded sections). Samples were incubated with primary antibody (2ug/ml) for 1.5 hours at room temperature. A peroxidase-conjugated polyclonal was used as the secondary antibody. Nuclei stained purple with hematoxylin.



Immunocytochemistry/ Immunofluorescence - Anti-DLL1 antibody (ab10554)

ICC/IF image of ab10554 stained MCF7 cells. The cells were 4% formaldehyde fixed (10 min) and then incubated in 1%BSA / 10% normal goat serum / 0.3M glycine in 0.1% PBS-Tween for 1h to permeabilise the cells and block non-specific protein-protein interactions. The cells were then incubated with the antibody (ab10554, 1µg/ml) overnight at +4°C. The secondary antibody (green) was Alexa Fluor® 488 goat anti-rabbit IgG (H+L) used at a 1/1000 dilution for 1h. Alexa Fluor® 594 WGA was used to label plasma membranes (red) at a 1/200 dilution for 1h. DAPI was used to stain the cell nuclei (blue) at a concentration of 1.43µM.



Western blot using Delta 1 antibody (ab10554) at 1/500 tested on the following tissue lysates:

Lane 1: Mouse Heart  
 Lane 2: Mouse Pancreas  
 Lane 3: Mouse Brain  
 Lane 4: Rat Heart  
 Lane 5: Rat Pancreas  
 Lane 6: Rat Brain

Secondary ab: Goat anti-rabbit IgG **ab6721** (1/5000)

Exposure time: 1 minute

Expected molecular weight: 77kDa

Cell lysates at 20µg per lane.

NB: This image shows that it was not possible to detect Delta 1 immunoreactivity by WB in the lysates tested. However little is known about Delta 1 expression and it is likely to be developmentally regulated with low expression/abundance making it difficult to detect in whole tissue homogenates. In favour of Delta 1 antibody (ab10554), the staining on the WB shows very low background and little cross reactivity in whole homogenates.

Western blot using Delta 1 antibody (ab10554) at 1/500 tested on the following tissue lysates:

Lane 1: Mouse Heart

**Please note:** All products are "FOR RESEARCH USE ONLY. NOT FOR USE IN DIAGNOSTIC PROCEDURES"

### Our Abpromise to you: Quality guaranteed and expert technical support

- Replacement or refund for products not performing as stated on the datasheet
- Valid for 12 months from date of delivery
- Response to your inquiry within 24 hours
- We provide support in Chinese, English, French, German, Japanese and Spanish
- Extensive multi-media technical resources to help you
- We investigate all quality concerns to ensure our products perform to the highest standards

If the product does not perform as described on this datasheet, we will offer a refund or replacement. For full details of the Abpromise, please visit <https://www.abcam.cn/abpromise> or contact our technical team.

### Terms and conditions

- Guarantee only valid for products bought direct from Abcam or one of our authorized distributors