


Anti-DLG5 antibody ab86783

[1 References](#) [2 图像](#)

概述

产品名称	Anti-DLG5抗体
描述	兔多克隆抗体to DLG5
宿主	Rabbit
经测试应用	适用于: WB, IP
种属反应性	与反应: Human 预测可用于: Horse, Guinea pig, Cow, Dog, Pig, Chimpanzee, Rhesus monkey, Gorilla 
免疫原	Synthetic peptide corresponding to a region between residues 1325 and 1375 of human DLG5 (NP_004738.3).
阳性对照	HeLa whole cell lysate
常规说明	<p>The Life Science industry has been in the grips of a reproducibility crisis for a number of years. Abcam is leading the way in addressing this with our range of recombinant monoclonal antibodies and knockout edited cell lines for gold-standard validation. Please check that this product meets your needs before purchasing.</p> <p>If you have any questions, special requirements or concerns, please send us an inquiry and/or contact our Support team ahead of purchase. Recommended alternatives for this product can be found below, along with publications, customer reviews and Q&As</p>

性能

形式	Liquid
存放说明	Shipped at 4°C. Upon delivery aliquot and store at -20°C. Avoid freeze / thaw cycles.
存储溶液	pH: 7 Preservative: 0.09% Sodium azide Constituent: Tris citrate/phosphate
纯度	Immunogen affinity purified
纯化说明	ab86783 was affinity purified using an epitope specific to DLG5 immobilized on solid support.
克隆	多克隆
同种型	IgG

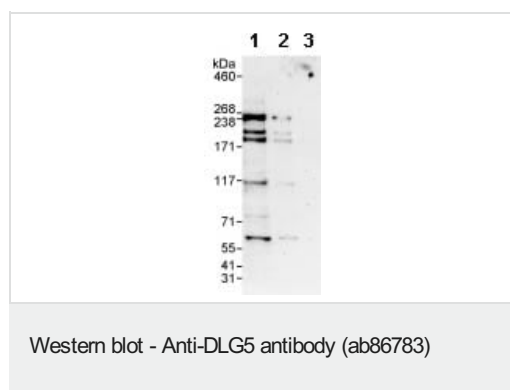
The Abpromise guarantee **Abpromise™** 承诺保证使用 ab86783 于以下的经测试应用

“应用说明”部分 下显示的仅为推荐的起始稀释度;实际最佳的稀释度/浓度应由使用者检定。

应用	Ab评论	说明
WB		1/2000 - 1/10000. Predicted molecular weight: 214 kDa.
IP		Use at 10 µg/mg of lysate.

靶标

功能	May play a role at the plasma membrane in the maintenance of the structure of epithelial cells and in the transmission of extracellular signals to the membrane and cytoskeleton.
组织特异性	Highly expressed in the placenta and prostate. Expressed at a lower level in the thyroid, spinal cord, trachea, adrenal gland, skeletal muscle, pancreas, heart, brain, liver and kidney. A short splice product shows more limited expression, being absent from at least the brain.
序列相似性	Belongs to the MAGUK family. Contains 1 CARD domain. Contains 1 guanylate kinase-like domain. Contains 4 PDZ (DHR) domains. Contains 1 SH3 domain.
细胞定位	Cell junction. Cell membrane. Localized at sites of cell-cell contact.

图片

All lanes : Anti-DLG5 antibody (ab86783) at 0.1 µg/ml

Lane 1 : HeLa whole cell lysate at 50 µg

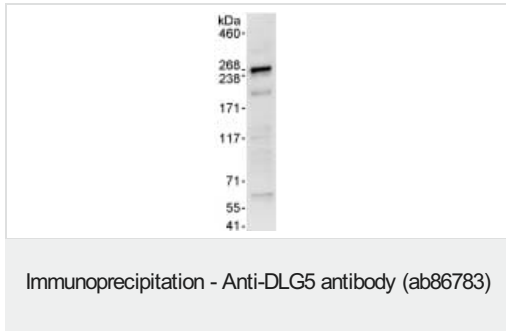
Lane 2 : HeLa whole cell lysate at 15 µg

Lane 3 : HeLa whole cell lysate at 5 µg

Developed using the ECL technique.

Predicted band size: 214 kDa

Exposure time: 3 minutes



Detection of DLG5 by Western Blot of Immunoprecipitate.
ab86783, at 1 µg/ml, staining DLG5 in HeLa whole cell lysate immunoprecipitated using ab86783 at 10 µg/mg lysate (1 mg/IP; 20% of IP loaded/lane).

Detection: Chemiluminescence with an exposure time of 30 seconds.

Please note: All products are "FOR RESEARCH USE ONLY. NOT FOR USE IN DIAGNOSTIC PROCEDURES"

Our Abpromise to you: Quality guaranteed and expert technical support

- Replacement or refund for products not performing as stated on the datasheet
- Valid for 12 months from date of delivery
- Response to your inquiry within 24 hours
- We provide support in Chinese, English, French, German, Japanese and Spanish
- Extensive multi-media technical resources to help you
- We investigate all quality concerns to ensure our products perform to the highest standards

If the product does not perform as described on this datasheet, we will offer a refund or replacement. For full details of the Abpromise, please visit <https://www.abcam.cn/abpromise> or contact our technical team.

Terms and conditions

- Guarantee only valid for products bought direct from Abcam or one of our authorized distributors