


Anti-Dishevelled 3 antibody [EP1991Y] ab76081

RabMAb

★★★★★ [2 Abreviews](#) [8 References](#) [4 图像](#)

概述

产品名称	Anti-Dishevelled 3抗体[EP1991Y]
描述	兔单克隆抗体[EP1991Y] to Dishevelled 3
宿主	Rabbit
经测试应用	适用于: WB, IHC-P, ICC/IF, Flow Cyt (Intra) 不适用于: IP
种属反应性	与反应: Rat, Human 预测可用于: Mouse 
免疫原	Synthetic peptide. This information is proprietary to Abcam and/or its suppliers.
阳性对照	WB: K562 cell lysate IHC-P: Human brain tissue ICC/IF: PC12 cells Flow Cyt: HeLa cells
常规说明	Our RabMAb [®] technology is a patented hybridoma-based technology for making rabbit monoclonal antibodies. For details on our patents, please refer to RabMAb[®] patents . The Life Science industry has been in the grips of a reproducibility crisis for a number of years. Abcam is leading the way in addressing this with our range of recombinant monoclonal antibodies and knockout edited cell lines for gold-standard validation. Please check that this product meets your needs before purchasing. If you have any questions, special requirements or concerns, please send us an inquiry and/or contact our Support team ahead of purchase. Recommended alternatives for this product can be found below, along with publications, customer reviews and Q&As

性能

形式	Liquid
存放说明	Shipped at 4°C. Upon delivery aliquot and store at -20°C. Avoid freeze / thaw cycles.
存储溶液	pH: 7.20 Preservative: 0.01% Sodium azide Constituents: 59% PBS, 40% Glycerol (glycerin, glycerine), 0.5% BSA
纯度	Protein A purified
克隆	单克隆
克隆编号	EP1991Y

同种型

lgG

应用

The Abpromise guarantee

Abpromise™承诺保证使用ab76081于以下的经测试应用

“应用说明”部分 下显示的仅为推荐的起始稀释度;实际最佳的稀释度/浓度应由使用者检定。

应用	Ab评论	说明
WB	★★★★★ (1)	1/500 - 1/1000. Predicted molecular weight: 78 kDa.
IHC-P	★★★★★ (1)	Use at an assay dependent concentration. Perform heat mediated antigen retrieval with citrate buffer pH 6 before commencing with IHC staining protocol.
ICC/IF		Use a concentration of 5 µg/ml.
Flow Cyt (Intra)		1/30. ab172730 - Rabbit monoclonal IgG, is suitable for use as an isotype control with this antibody.

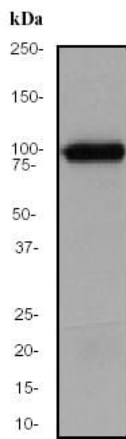
应用说明

Is unsuitable for IP.

靶标

功能	May play a role in the signal transduction pathway mediated by multiple Wnt genes.
序列相似性	Belongs to the DSH family. Contains 1 DEP domain. Contains 1 DIX domain. Contains 1 PDZ (DHR) domain.
翻译后修饰	Ubiquitinated. Deubiquitinated by CYLD, which acts on 'Lys-63'-linked ubiquitin chains.
细胞定位	Cytoplasm.

图片



Western blot - Anti-Dishevelled 3 antibody
[EP1991Y] (ab76081)

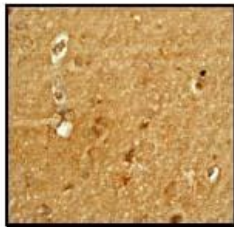
Anti-Dishevelled 3 antibody [EP1991Y] (ab76081) at 1/1000
dilution + K562 cell lysate at 10 µg

Secondary

Goat anti-Rabbit HRP labelled IgG at 1/2000 dilution

Predicted band size: 78 kDa

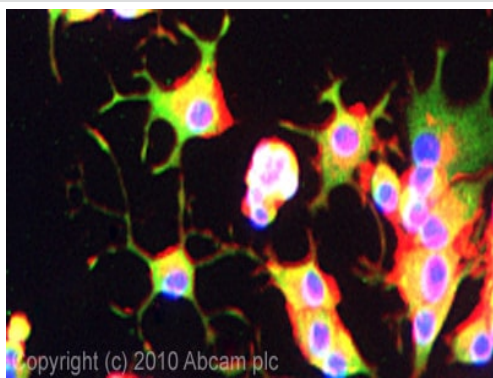
Observed band size: 95 kDa



Immunohistochemistry (Formalin/PFA-fixed paraffin-
embedded sections) - Anti-Dishevelled 3 antibody
[EP1991Y] (ab76081)

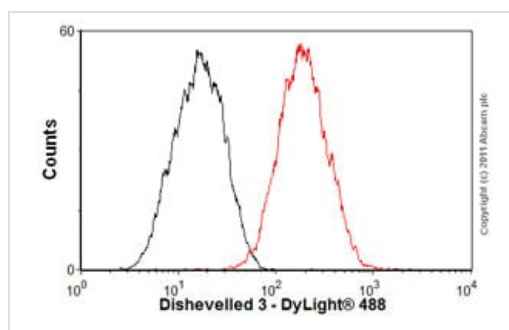
Immunohistochemical staining of paraffin-embedded human brain
tissue, using ab76081, at 1/100-1/250 dilution.

Perform heat mediated antigen retrieval with citrate buffer pH 6
before commencing with IHC staining protocol.



Immunocytochemistry/ Immunofluorescence - Anti-
Dishevelled 3 antibody [EP1991Y] (ab76081)

ICC/IF image of ab76081 stained PC12 cells. The cells were 100%
methanol fixed (5 min) and then incubated in 1%BSA / 10% normal
goat serum / 0.3M glycine in 0.1% PBS-Tween for 1h to
permeabilise the cells and block non-specific protein-protein
interactions. The cells were then incubated with the antibody
(ab76081, 5µg/ml) overnight at +4°C. The secondary antibody
(green) was Alexa Fluor® 488 goat anti-rabbit IgG (H+L) used at a
1/1000 dilution for 1h. Alexa Fluor® 594 WGA was used to label
plasma membranes (red) at a 1/200 dilution for 1h. DAPI was used
to stain the cell nuclei (blue) at a concentration of 1.43µM.



Flow Cytometry (Intracellular) - Anti-Dishevelled 3 antibody [EP1991Y] (ab76081)

Overlay histogram showing HeLa cells stained with ab76081 (red line). The cells were fixed with 80% methanol (5 min) and then permeabilized with 0.1% PBS-Tween for 20 min. The cells were then incubated in 1x PBS / 10% normal goat serum / 0.3M glycine to block non-specific protein-protein interactions followed by the antibody (ab76081, 1/100 dilution) for 30 min at 22°C. The secondary antibody used was DyLight® 488 goat anti-rabbit IgG (H+L) ([ab96899](#)) at 1/500 dilution for 30 min at 22°C. Isotype control antibody (black line) was rabbit IgG (monoclonal) (1 µg/1x10⁶ cells) used under the same conditions. Acquisition of >5,000 events was performed.

Please note: All products are "FOR RESEARCH USE ONLY. NOT FOR USE IN DIAGNOSTIC PROCEDURES"

Our Abpromise to you: Quality guaranteed and expert technical support

- Replacement or refund for products not performing as stated on the datasheet
- Valid for 12 months from date of delivery
- Response to your inquiry within 24 hours
- We provide support in Chinese, English, French, German, Japanese and Spanish
- Extensive multi-media technical resources to help you
- We investigate all quality concerns to ensure our products perform to the highest standards

If the product does not perform as described on this datasheet, we will offer a refund or replacement. For full details of the Abpromise, please visit <https://www.abcam.cn/abpromise> or contact our technical team.

Terms and conditions

- Guarantee only valid for products bought direct from Abcam or one of our authorized distributors