


# Anti-Dishevelled 3 antibody ab93850

[1 References](#) [1 图像](#)

### 概述

---

产品名称	Anti-Dishevelled 3抗体
描述	兔多克隆抗体to Dishevelled 3
宿主	Rabbit
经测试应用	适用于: WB
种属反应性	与反应: Human 预测可用于: Mouse, Rat 
免疫原	Synthetic peptide. This information is proprietary to Abcam and/or its suppliers.
阳性对照	Recombinant Human Dishevelled 3 protein ( <a href="#">ab114497</a> ) can be used as a positive control in WB. This antibody gave a positive signal in the following lysates: Ovary (Human) Tissue Lysate; Heart (Human) Tissue Lysate
常规说明	<p>The Life Science industry has been in the grips of a reproducibility crisis for a number of years. Abcam is leading the way in addressing this with our range of recombinant monoclonal antibodies and knockout edited cell lines for gold-standard validation. Please check that this product meets your needs before purchasing.</p> <p>If you have any questions, special requirements or concerns, please send us an inquiry and/or contact our Support team ahead of purchase. Recommended alternatives for this product can be found below, along with publications, customer reviews and Q&amp;As</p>

### 性能

---

形式	Liquid
存放说明	Shipped at 4°C. Store at +4°C short term (1-2 weeks). Upon delivery aliquot. Store at -20°C or -80°C. Avoid freeze / thaw cycle.
存储溶液	pH: 7.40 Preservative: 0.02% Sodium azide Constituent: PBS
纯度	Batches of this product that have a concentration < 1mg/ml may have BSA added as a stabilising agent. If you would like information about the formulation of a specific lot, please contact our scientific support team who will be happy to help. Immunogen affinity purified

克隆 多克隆  
同种型 IgG

## 应用

**The Abpromise guarantee** **Abpromise™** 承诺保证使用ab93850于以下的经测试应用

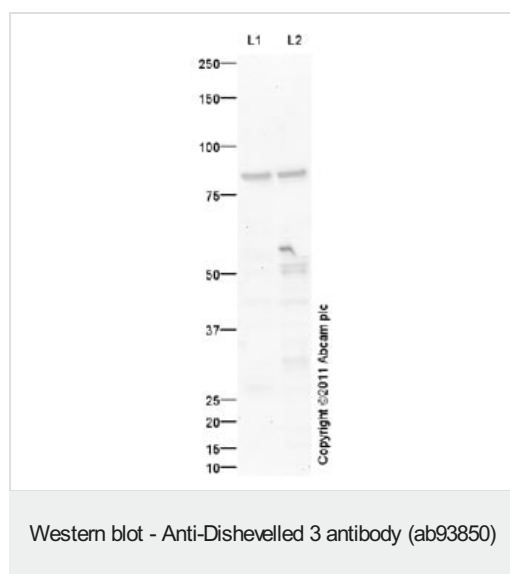
“应用说明”部分 下显示的仅为推荐的起始稀释度;实际最佳的稀释度/浓度应由使用者检定。

应用	Ab评论	说明
WB		Use a concentration of 1 mg/ml. Detects a band of approximately 78 kDa (predicted molecular weight: 78 kDa).

## 靶标

**功能** May play a role in the signal transduction pathway mediated by multiple Wnt genes.  
**序列相似性** Belongs to the DSH family.  
Contains 1 DEP domain.  
Contains 1 DIX domain.  
Contains 1 PDZ (DHR) domain.  
**翻译后修饰** Ubiquitinated. Deubiquitinated by CYLD, which acts on 'Lys-63'-linked ubiquitin chains.  
**细胞定位** Cytoplasm.

## 图片



**All lanes** : Anti-Dishevelled 3 antibody (ab93850) at 1 µg/ml

**Lane 1** : Human ovary tissue lysate - total protein ([ab30222](#))

**Lane 2** : Human heart tissue lysate - total protein ([ab29431](#))

Lysates/proteins at 10 µg per lane.

### Secondary

**All lanes** : Goat polyclonal Secondary Antibody to Rabbit IgG - H&L (HRP), pre-adsorbed at 1/5000 dilution

Developed using the ECL technique.

Performed under reducing conditions.

**Predicted band size:** 78 kDa

**Observed band size:** 78 kDa

**Additional bands at:** 50 kDa. We are unsure as to the identity of

these extra bands.

**Exposure time:** 3 minutes

**Please note:** All products are "FOR RESEARCH USE ONLY. NOT FOR USE IN DIAGNOSTIC PROCEDURES"

### **Our Abpromise to you: Quality guaranteed and expert technical support**

---

- Replacement or refund for products not performing as stated on the datasheet
- Valid for 12 months from date of delivery
- Response to your inquiry within 24 hours
  
- We provide support in Chinese, English, French, German, Japanese and Spanish
- Extensive multi-media technical resources to help you
- We investigate all quality concerns to ensure our products perform to the highest standards

If the product does not perform as described on this datasheet, we will offer a refund or replacement. For full details of the Abpromise, please visit <https://www.abcam.cn/abpromise> or contact our technical team.

### **Terms and conditions**

---

- Guarantee only valid for products bought direct from Abcam or one of our authorized distributors