


Anti-Dishevelled 2 antibody ab104438

2 图像

概述

产品名称	Anti-Dishevelled 2抗体
描述	兔多克隆抗体to Dishevelled 2
宿主	Rabbit
经测试应用	适用于: WB, IP
种属反应性	与反应: Human 预测可用于: Chimpanzee, Gorilla, Orangutan 
免疫原	Synthetic peptide, corresponding to a region within amino acids 650-700 of Human Dishevelled 2 (NP_004413.1).
阳性对照	HeLa and 293T whole cell lysates
常规说明	<p>The Life Science industry has been in the grips of a reproducibility crisis for a number of years. Abcam is leading the way in addressing this with our range of recombinant monoclonal antibodies and knockout edited cell lines for gold-standard validation. Please check that this product meets your needs before purchasing.</p> <p>If you have any questions, special requirements or concerns, please send us an inquiry and/or contact our Support team ahead of purchase. Recommended alternatives for this product can be found below, along with publications, customer reviews and Q&As</p>

性能

形式	Liquid
存放说明	Shipped at 4°C. Upon delivery aliquot and store at -20°C. Avoid freeze / thaw cycles.
存储溶液	pH: 7 Preservative: 0.09% Sodium azide Constituent: Tris citrate/phosphate
纯度	Immunogen affinity purified
克隆	多克隆
同种型	IgG

应用

The Abpromise guarantee

Abpromise™ 承诺保证使用 ab104438 于以下的经测试应用

“应用说明”部分 下显示的仅为推荐的起始稀释度；实际最佳的稀释度/浓度应由使用者检定。

应用	Ab 评论	说明
WB		1/2000 - 1/10000. Predicted molecular weight: 79 kDa.
IP		Use at 2-5 µg/mg of lysate.

靶标

功能

Participates in Wnt signaling by binding to the cytoplasmic C-terminus of frizzled family members and transducing the Wnt signal to down-stream effectors. Promotes internalization and degradation of frizzled proteins upon Wnt signaling. Plays a role both in canonical and non-canonical Wnt signaling. Plays a role in the signal transduction pathways mediated by multiple Wnt genes.

序列相似性

Belongs to the DSH family.
Contains 1 DEP domain.
Contains 1 DIX domain.
Contains 1 PDZ (DHR) domain.

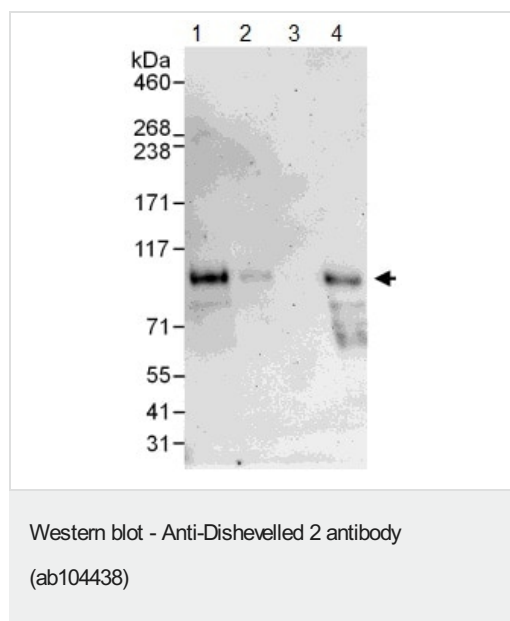
结构域

The DIX domain mediates homooligomerization.

细胞定位

Cell membrane. Cytoplasm > cytosol. Cytoplasmic vesicle. Localizes at the cell membrane upon interaction with frizzled family members and promotes their internalization. Localizes to cytoplasmic puncta.

图片



All lanes : Anti-Dishevelled 2 antibody (ab104438) at 0.1 µg/ml

Lane 1 : HeLa whole cell lysate at 50 µg

Lane 2 : HeLa whole cell lysate at 15 µg

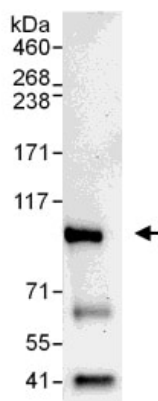
Lane 3 : HeLa whole cell lysate at 5 µg

Lane 4 : 293T whole cell lysate at 50 µg

Developed using the ECL technique.

Predicted band size: 79 kDa

Exposure time: 3 minutes



Detection of Dishevelled 2 in immunoprecipitates of HeLa whole cell lysate (1 mg lysate for IP, 20% of IP loaded on gel) using ab104438 at 3 µg/mg lysate for IP, and at 1 µg/ml for the subsequent western blot.

Detection: chemiluminescence with exposure time of 30 seconds.

Immunoprecipitation - Anti-Dishevelled 2 antibody
(ab104438)

Please note: All products are "FOR RESEARCH USE ONLY. NOT FOR USE IN DIAGNOSTIC PROCEDURES"

Our Abpromise to you: Quality guaranteed and expert technical support

- Replacement or refund for products not performing as stated on the datasheet
- Valid for 12 months from date of delivery
- Response to your inquiry within 24 hours
- We provide support in Chinese, English, French, German, Japanese and Spanish
- Extensive multi-media technical resources to help you
- We investigate all quality concerns to ensure our products perform to the highest standards

If the product does not perform as described on this datasheet, we will offer a refund or replacement. For full details of the Abpromise, please visit <https://www.abcam.cn/abpromise> or contact our technical team.

Terms and conditions

- Guarantee only valid for products bought direct from Abcam or one of our authorized distributors