

# Anti-DHHC-20 antibody ab110478

**1 References**   [1 图像](#)

### 概述

产品名称	Anti-DHHC-20抗体
描述	兔多克隆抗体to DHHC-20
宿主	Rabbit
经测试应用	适用于: WB
种属反应性	与反应: Human 预测可用于: Mouse, Rat 
免疫原	Synthetic peptide corresponding to Human DHHC-20 (internal sequence).
阳性对照	Extracts from COLO, MCF7 and Jurkat cells
常规说明	<p>The Life Science industry has been in the grips of a reproducibility crisis for a number of years. Abcam is leading the way in addressing this with our range of recombinant monoclonal antibodies and knockout edited cell lines for gold-standard validation. Please check that this product meets your needs before purchasing.</p> <p>If you have any questions, special requirements or concerns, please send us an inquiry and/or contact our Support team ahead of purchase. Recommended alternatives for this product can be found below, along with publications, customer reviews and Q&amp;As</p>

### 性能

形式	Liquid
存放说明	Shipped at 4°C. Store at -20°C. Stable for 12 months at -20°C.
存储溶液	<p>pH: 7.40</p> <p>Preservative: 0.02% Sodium azide</p> <p>Constituents: PBS, 0.88% Sodium chloride, 50% Glycerol (glycerin, glycerine)</p> <p>PBS is without Mg2+ and Ca2+.</p>
纯度	Immunogen affinity purified
纯化说明	ab110478 was affinity purified from rabbit antiserum by affinity chromatography using epitope-specific immunogen.
克隆	多克隆
同种型	IgG



## 应用

### The Abpromise guarantee

**Abpromise™**承诺保证使用ab110478于以下的经测试应用

“应用说明”部分 下显示的仅为推荐的起始稀释度;实际最佳的稀释度/浓度应由使用者检定。

应用	Ab评论	说明
WB		1/500 - 1/1000. Predicted molecular weight: 42 kDa.

## 靶标

### 序列相似性

Belongs to the DHHC palmitoyltransferase family.  
Contains 1 DHHC-type zinc finger.

### 结构域

The DHHC domain is required for palmitoyltransferase activity.

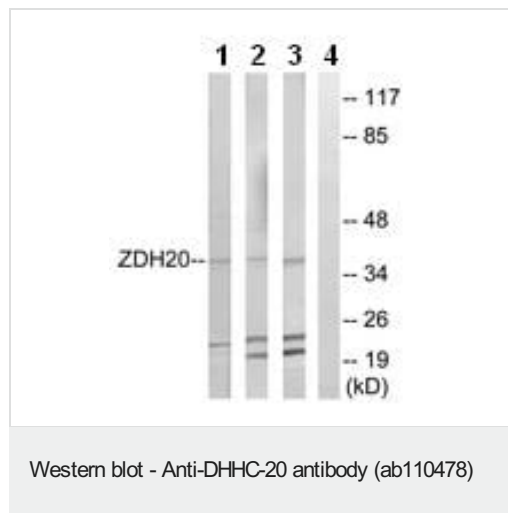
### 翻译后修饰

Phosphorylated upon DNA damage, probably by ATM or ATR.

### 细胞定位

Membrane.

## 图片



**All lanes :** Anti-DHHC-20 antibody (ab110478) at 1/500 dilution

**Lane 1 :** Extracts from COLO cells

**Lane 2 :** Extracts from MCF7 cells

**Lane 3 :** Extracts from Jurkat cells

**Lane 4 :** Extracts from Jurkat cells with immunized peptide at 10 µg

Lysates/proteins at 30 µg per lane.

**Predicted band size:** 42 kDa

**Please note:** All products are "FOR RESEARCH USE ONLY. NOT FOR USE IN DIAGNOSTIC PROCEDURES"

## Our Abpromise to you: Quality guaranteed and expert technical support

- Replacement or refund for products not performing as stated on the datasheet
- Valid for 12 months from date of delivery
- Response to your inquiry within 24 hours
- We provide support in Chinese, English, French, German, Japanese and Spanish
- Extensive multi-media technical resources to help you
- We investigate all quality concerns to ensure our products perform to the highest standards

If the product does not perform as described on this datasheet, we will offer a refund or replacement. For full details of the Abpromise,



please visit <https://www.abcam.cn/abpromise> or contact our technical team.

## Terms and conditions

---

- Guarantee only valid for products bought direct from Abcam or one of our authorized distributors