

Anti-DFNA5/GSDME antibody [EPR19859] - N-terminal ab215191

敲除验证
重组
RabMAb

★★★★★
[4 Abreviews](#)
[97 References](#)
[12 图像](#)

概述

产品名称	Anti-DFNA5/GSDME抗体[EPR19859] - N-terminal
描述	兔单克隆抗体[EPR19859] to DFNA5/GSDME - N-terminal
宿主	Rabbit
特异性	Our previous testing data indicates that this antibody detects no signal or very weak signal in mouse heart, spleen, lung, stomach, testicle, skin, pancreas, muscle and lymph node tissues. Final results may be affected by the expression level of the tested samples.
经测试应用	适用于: WB, IP, Flow Cyt (Intra)
种属反应性	与反应: Mouse, Rat, Human
免疫原	Recombinant fragment. This information is proprietary to Abcam and/or its suppliers.
阳性对照	WB: Mouse brain lysate; SH-SY5Y and EMT6 whole cell lysates; Human fetal brain lysate; Rat brain lysates; HEK-293 transfected with DDDDK tagged DFNA5/GSDME (N-terminal) expression vector whole cell lysate; SGC-7901 cell lysate. Flow Cyt (intra).: SH-SY5Y and EMT6 cells. IP: EMT6 whole cell lysate
常规说明	<p>This product is a recombinant monoclonal antibody, which offers several advantages including:</p> <ul style="list-style-type: none"> - High batch-to-batch consistency and reproducibility - Improved sensitivity and specificity - Long-term security of supply - Animal-free production <p>For more information see here.</p> <p>Our RabMAb[®] technology is a patented hybridoma-based technology for making rabbit monoclonal antibodies. For details on our patents, please refer to RabMAb[®] patents.</p>

性能

形式	Liquid
存放说明	Shipped at 4°C. Store at +4°C short term (1-2 weeks). Upon delivery aliquot. Store at -20°C long term. Avoid freeze / thaw cycle.
存储溶液	<p>pH: 7.2</p> <p>Preservative: 0.01% Sodium azide</p>

	Constituents: 0.05% BSA, 40% Glycerol, PBS
纯度	Protein A purified
克隆	单克隆
克隆编号	EPR19859
同种型	IgG

应用

The Abpromise guarantee **Abpromise™**承诺保证使用ab215191于以下的经测试应用

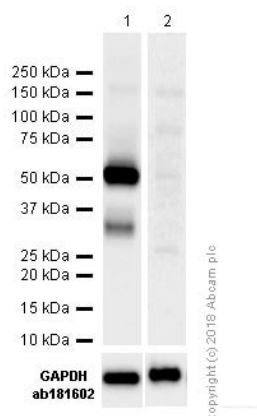
“应用说明”部分 下显示的仅为推荐的起始稀释度;实际最佳的稀释度/浓度应由使用者检定。

应用	Ab评论	说明
WB	★★★★★ (3)	1/1000. Detects a band of approximately 55 kDa (predicted molecular weight: 55 kDa). Our previous testing data indicates that this antibody detects no signal or very weak signal in mouse heart, spleen, lung, stomach, testicle, skin, pancreas, muscle and lymph node tissues. Final results may be affected by the expression level of the tested samples.
IP		1/30.
Flow Cyt (Intra)		1/60.

靶标

组织特异性	Expressed in cochlea. Low level of expression in heart, brain, placenta, lung, liver, skeletal muscle, kidney and pancreas, with highest expression in placenta.
疾病相关	Defects in DFNA5 are the cause of deafness autosomal dominant type 5 (DFNA5) [MIM:600994]. DFNA5 is a form of sensorineural hearing loss. Sensorineural deafness results from damage to the neural receptors of the inner ear, the nerve pathways to the brain, or the area of the brain that receives sound information.
序列相似性	Belongs to the gasdermin family.

图片



Western blot - Anti-DFNA5/GSDME antibody [EPR19859] - N-terminal (ab215191)

All lanes : Anti-DFNA5/GSDME antibody [EPR19859] - N-terminal (ab215191) at 1/1000 dilution

Lane 1 : SH-SY5Y (Human neuroblastoma epithelial cell) whole cell lysates with 5% NFDM/TBST

Lane 2 : SW480 (Human colorectal adenocarcinoma epithelial cell) whole cell lysates with 5% NFDM/TBST

Lysates/proteins at 20 µg per lane.

Secondary

All lanes : Goat Anti-Rabbit IgG H&L (HRP) ([ab97051](#)) at 1/20000 dilution

Predicted band size: 55 kDa

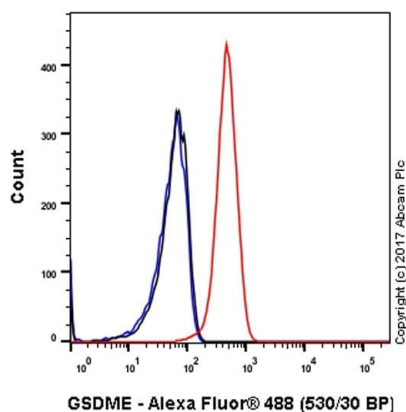
Observed band size: 55 kDa

Exposure times:

Lane 1: 15s

Lane 2: 3 min

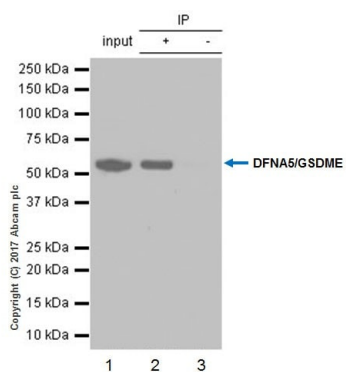
The band around 35kDa is GSDME-NT which might be cleaved by activated caspase-3 (PMID: 33589596, PMID: 31347748, PMID: 35623158).



Flow Cytometry (Intracellular) - Anti-DFNA5/GSDME antibody [EPR19859] - N-terminal (ab215191)

Intracellular flow cytometric analysis of 4% paraformaldehyde-fixed, 90% methanol permeabilized EMT6 (mouse mammary carcinoma cell line) cell line labeling DFNA5/GSDME with ab215191 at 1/600 dilution (red) compared with a Rabbit IgG, monoclonal [EPR25A] - Isotype Control (**ab172730**) (black) and an unlabeled control (cells without incubation with primary antibody and secondary antibody) (blue). Goat Anti-Rabbit IgG H&L (Alexa Fluor® 488) (**ab150077**) at 1/2000 dilution was used as the secondary antibody.

EMT6 cells were kindly provided by our collaborator Dr. Feng Shao, NIBS



Immunoprecipitation - Anti-DFNA5/GSDME antibody [EPR19859] - N-terminal (ab215191)

ab215191 at 1/30 immunoprecipitating DFNA5/GSDME in EMT6 (mouse mammary carcinoma cell line) whole cell lysate.

Lane 1 (input): EMT6 whole cell lysate (10µg)

Lane 2 (+): ab215191 + EMT6 whole cell lysate

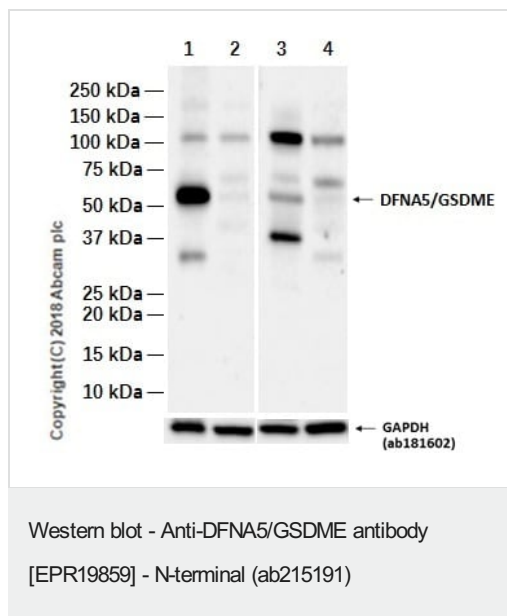
Lane 3 (-): Rabbit monoclonal IgG (**ab172730**) instead of ab215191 in EMT6 whole cell lysate

For western blotting, ab215191 at 1/500. VeriBlot for IP Detection Reagent (HRP) (**ab131366**), was used for detection at 1/1,000 dilution

Blocking buffer and concentration: 5% NFDM/TBST.

Diluting buffer and concentration: 5% NFDM /TBST.

EMT6 cells were kindly provided by our collaborator Dr. Feng Shao, NIBS



All lanes : Anti-DFNA5/GSDME antibody [EPR19859] - N-terminal (ab215191) at 0.7 µg/ml

Lane 1 : Mouse brain tissue lysate

Lane 2 : Mouse kidney tissue lysate

Lane 3 : Mouse liver tissue lysate

Lane 4 : Mouse thymus tissue lysate

Lysates/proteins at 20 µg per lane.

Secondary

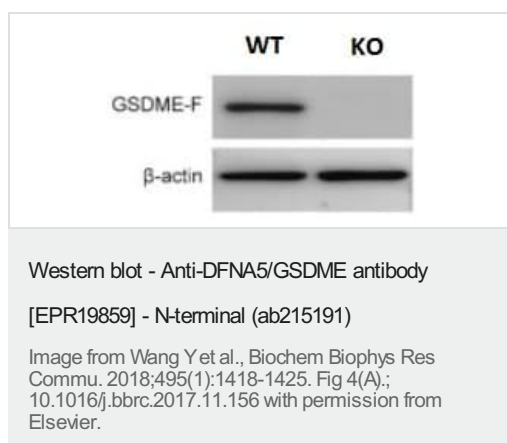
All lanes : Goat Anti-Rabbit IgG (HRP), specific to the non-reduced form of IgG at 1/2000 dilution

Predicted band size: 55 kDa

Observed band size: 55 kDa

Exposure time: 3 minutes

Blocking and diluting buffer: 5% NFDM/TBST



All lanes : Anti-DFNA5/GSDME antibody [EPR19859] - N-terminal (ab215191) at 1/1000 dilution

Lane 1 : Wild Type SGC-7901 (human papillomavirus-related endocervical adenocarcinoma cell line) cell lysates

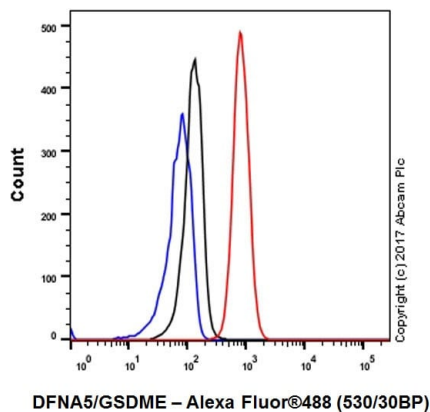
Lane 2 : DFNA5/GSDME Knockout SGC-7901 cell lysates

Secondary

All lanes : Goat Anti-Rabbit IgG H&L (HRP) (**ab6721**) at 1/2000 dilution

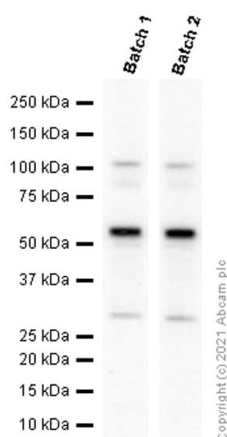
Predicted band size: 55 kDa

<https://www.sciencedirect.com/journal/biochemical-and-biophysical-research-communications>



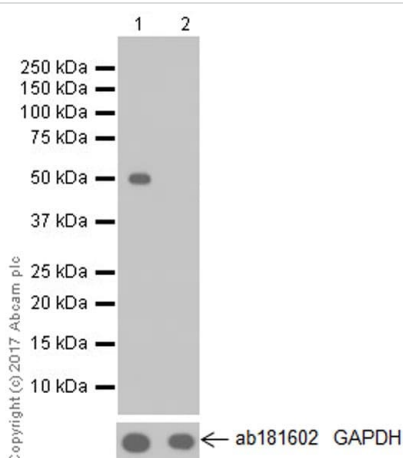
Flow Cytometry (Intracellular) - Anti-DFNA5/GSDME antibody [EPR19859] - N-terminal (ab215191)

Intracellular flow cytometric analysis of 4% paraformaldehyde-fixed, 90% methanol permeabilized SH-SY5Y (human neuroblastoma cell line from bone marrow) cell line labeling DFNA5/GSDME with ab215191 at 1/60 dilution (red) compared with a Rabbit IgG, monoclonal [EPR25A] - Isotype Control (**ab172730**) (black) and an unlabeled control (cells without incubation with primary antibody and secondary antibody) (blue). Goat Anti-Rabbit IgG H&L (Alexa Fluor® 488) (**ab150077**) at 1/2000 dilution was used as the secondary antibody.



Western blot - Anti-DFNA5/GSDME antibody [EPR19859] - N-terminal (ab215191)

Different batches of ab215191 were tested on SH-SY5Y (Human neuroblastoma epithelial cell) lysate at 0.6 µg/ml. 15 µg of lysate was loaded in each lane. Bands observed at 55 kDa.



Western blot - Anti-DFNA5/GSDME antibody [EPR19859] - N-terminal (ab215191)

All lanes : Anti-DFNA5/GSDME antibody [EPR19859] - N-terminal (ab215191) at 1/5000 dilution

Lane 1 : SH-SY5Y (human neuroblastoma cell line from bone marrow) whole cell lysate

Lane 2 : DFNA5/GSDME knockout SH-SY5Y (human neuroblastoma cell line from bone marrow) whole cell lysate

Lysates/proteins at 10 µg per lane.

Secondary

All lanes : Goat Anti-Rabbit IgG H&L (HRP) (**ab97051**) at 1/100000 dilution

Developed using the ECL technique.

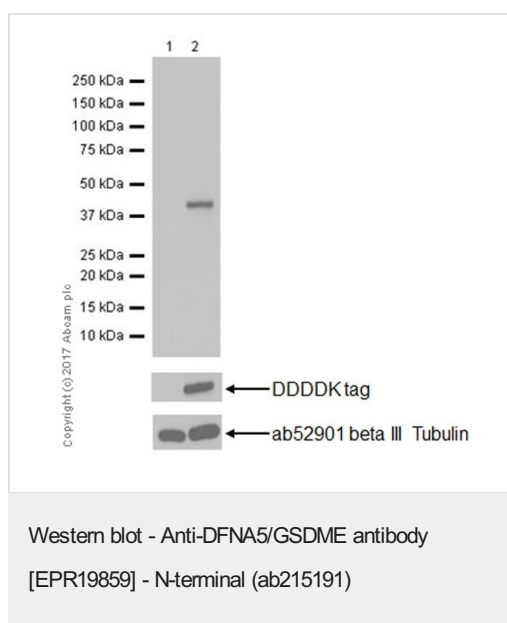
Predicted band size: 55 kDa

Observed band size: 55 kDa

Exposure time: 15 seconds

Blocking/Dilution buffer: 5% NFDM/TBST.

The cell lysates were kindly provided by our collaborator, Dr. Feng Shao, NIBS.



All lanes : Anti-DFNA5/GSDME antibody [EPR19859] - N-terminal (ab215191) at 1/10000 dilution

Lane 1 : HEK-293 (human epithelial cell line from embryonic kidney) transfected with a control vector containing DDDDK tag, whole cell lysate

Lane 2 : HEK-293 (human epithelial cell line from embryonic kidney) transfected with DDDDK tagged DFNA5/GSDME (N-terminal) expression vector, whole cell lysate

Lysates/proteins at 20 µg per lane.

Secondary

All lanes : Goat Anti-Rabbit IgG H&L (HRP) ([ab97051](#)) at 1/100000 dilution

Developed using the ECL technique.

Predicted band size: 55 kDa

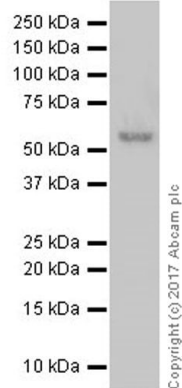
Observed band size: 37 kDa

Exposure time: 1 second

Blocking/Dilution buffer: 5% NFDM/TBST.

This antibody is specific to the N-terminus of DFNA5/GSDME.

The cell lysates were kindly provided by our collaborator, Dr. Feng Shao, NIBS.



Western blot - Anti-DFNA5/GSDME antibody
[EPR19859] - N-terminal (ab215191)

Anti-DFNA5/GSDME antibody [EPR19859] - N-terminal
(ab215191) at 1/1000 dilution + Human fetal brain lysate at 10 µg

Secondary

VeriBlot for IP Detection Reagent (HRP) ([ab131366](#)) at 1/100000 dilution

Developed using the ECL technique.

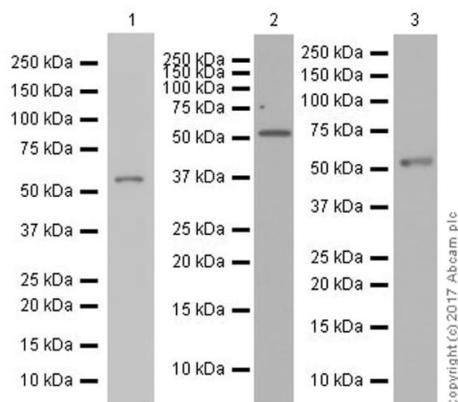
Predicted band size: 55 kDa

Observed band size: 55 kDa

Exposure time: 3 minutes

Blocking/Dilution buffer: 5% NFDM/TBST.

The molecular weight observed is consistent with what has been described in the literature (PMID: 28459430).



Western blot - Anti-DFNA5/GSDME antibody
[EPR19859] - N-terminal (ab215191)

All lanes : Anti-DFNA5/GSDME antibody [EPR19859] - N-terminal
(ab215191) at 1/1000 dilution

Lane 1 : EMT6 (mouse mammary carcinoma cell line) whole cell
lysate

Lane 2 : Mouse brain lysate

Lane 3 : Rat brain lysate

Lysates/proteins at 10 µg per lane.

Secondary

All lanes : Goat Anti-Rabbit IgG H&L (HRP) ([ab97051](#)) at
1/100000 dilution

Developed using the ECL technique.

Predicted band size: 55 kDa

Observed band size: 55 kDa





Exposure time: 3 minutes

Blocking/Dilution buffer: 5% NFDM/TBST.

The molecular weight observed is consistent with what has been described in the literature (PMID: 28459430).

The EMT6 cell lysate was kindly provided by our collaborator Dr. Feng Shao, NIBS.

Why choose a recombinant antibody?

 Research with confidence Consistent and reproducible results	 Long-term and scalable supply Recombinant technology
 Success from the first experiment Confirmed specificity	 Ethical standards compliant Animal-free production

Anti-DFNA5/GSDME antibody [EPR19859] - N-terminal (ab215191)

Please note: All products are "FOR RESEARCH USE ONLY. NOT FOR USE IN DIAGNOSTIC PROCEDURES"

Our Abpromise to you: Quality guaranteed and expert technical support

- Replacement or refund for products not performing as stated on the datasheet
- Valid for 12 months from date of delivery
- Response to your inquiry within 24 hours
- We provide support in Chinese, English, French, German, Japanese and Spanish
- Extensive multi-media technical resources to help you
- We investigate all quality concerns to ensure our products perform to the highest standards

If the product does not perform as described on this datasheet, we will offer a refund or replacement. For full details of the Abpromise, please visit <https://www.abcam.cn/abpromise> or contact our technical team.

Terms and conditions

- Guarantee only valid for products bought direct from Abcam or one of our authorized distributors