


Anti-Desmoglein 2/DSG2 antibody [EPR6768] ab150372

敲除验证
重组
RabMAb

★★★★☆
[2 Abreviews](#)
[17 References](#)
[5 图像](#)

概述

产品名称	Anti-Desmoglein 2/DSG2抗体[EPR6768]
描述	兔单克隆抗体[EPR6768] to Desmoglein 2/DSG2
宿主	Rabbit
经测试应用	适用于: WB, IHC-P 不适用于: Flow Cyt, ICC/IF or IP
种属反应性	与反应: Mouse, Rat, Human 预测可用于: Monkey 
免疫原	Synthetic peptide. This information is proprietary to Abcam and/or its suppliers.
阳性对照	WB: HAP1, HepG2, HeLa, Human fetal heart, mouse heart and rat heart lysates. IHC-P: Human thyroid gland papillary carcinoma tissue.
常规说明	<p>This product is a recombinant monoclonal antibody, which offers several advantages including:</p> <ul style="list-style-type: none"> - High batch-to-batch consistency and reproducibility - Improved sensitivity and specificity - Long-term security of supply - Animal-free production <p>For more information see here.</p> <p>Our RabMAb[®] technology is a patented hybridoma-based technology for making rabbit monoclonal antibodies. For details on our patents, please refer to RabMAb[®] patents.</p>

性能

形式	Liquid
存放说明	Shipped at 4°C. Upon delivery aliquot and store at -20°C. Avoid freeze / thaw cycles.
存储溶液	<p>pH: 7.2</p> <p>Preservative: 0.01% Sodium azide</p> <p>Constituents: 9% PBS, 40% Glycerol (glycerin, glycerine), 0.05% BSA, 50% Tissue culture supernatant</p>
纯度	Protein A purified
克隆	单克隆

克隆编号

EPR6768

同种型

IgG

应用

The Abpromise guarantee **Abpromise™**承诺保证使用ab150372于以下的经测试应用

“应用说明”部分 下显示的仅为推荐的起始稀释度;实际最佳的稀释度/浓度应由使用者检定。

应用	Ab评论	说明
WB		1/10000 - 1/50000. Predicted molecular weight: 122 kDa.
IHC-P	★★★★★ (1)	1/250 - 1/500. Perform heat mediated antigen retrieval before commencing with IHC staining protocol.

应用说明

Is unsuitable for Flow Cyt, ICC/IF or IP.

靶标

功能

Component of intercellular desmosome junctions. Involved in the interaction of plaque proteins and intermediate filaments mediating cell-cell adhesion.

组织特异性

All of the tissues tested and carcinomas.

疾病相关

Defects in DSG2 are the cause of familial arrhythmogenic right ventricular dysplasia type 10 (ARVD10) [MIM:610193]; also known as arrhythmogenic right ventricular cardiomyopathy 10 (ARVC10). ARVD is an autosomal dominant disease characterized by partial degeneration of the myocardium of the right ventricle, electrical instability, and sudden death. It is clinically defined by electrocardiographic and angiographic criteria; pathologic findings, replacement of ventricular myocardium with fatty and fibrous elements, preferentially involve the right ventricular free wall. Genetic variations in DSG2 are the cause of susceptibility to cardiomyopathy dilated type 1BB (CMD1BB) [MIM:612877]. A disorder characterized by ventricular dilation and impaired systolic function, resulting in congestive heart failure and arrhythmia. Patients are at risk of premature death.

序列相似性

Contains 4 cadherin domains.

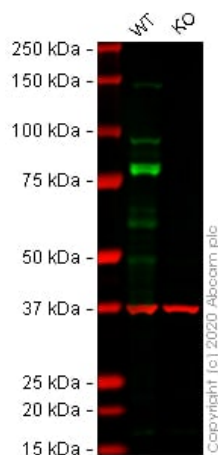
结构域

Calcium may be bound by the cadherin-like repeats.

细胞定位

Cell membrane. Cell junction > desmosome.

图片



Western blot - Anti-Desmoglein 2/DSG2 antibody [EPR6768] (ab150372)

All lanes : Anti-Desmoglein 2/DSG2 antibody [EPR6768] (ab150372) at 1/10000 dilution

Lane 1 : Wild-type HeLa cell lysate

Lane 2 : DSG2 knockout HeLa cell lysate

Lysates/proteins at 20 µg per lane.

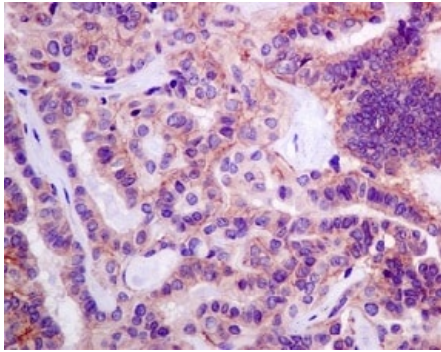
Performed under reducing conditions.

Predicted band size: 122 kDa

Observed band size: 90-160 kDa

Lanes 1- 2: Merged signal (red and green). Green - ab150372 observed at 90-160 kDa. Red - Anti-GAPDH antibody [6C5] - Loading Control ([ab8245](#)) observed at 37 kDa.

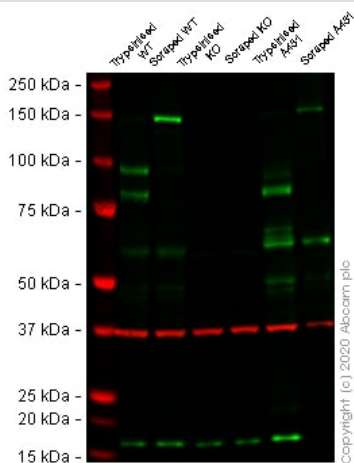
ab150372 was shown to react with Desmoglein 2/DSG2 in wild-type HeLa cells in western blot. Loss of signal was observed when knockout cell line [ab261826](#) (knockout cell lysate [ab257158](#)) was used. Wild-type HeLa and DSG2 knockout HeLa cell lysates were subjected to SDS-PAGE. Membrane was blocked for 1 hour at room temperature in 0.1% TBST with 3% non-fat dried milk. ab150372 and Anti-GAPDH antibody [6C5] - Loading Control ([ab8245](#)) overnight at 4°C at a 1 in 10000 dilution and a 1 in 20000 dilution respectively. Blots were developed with Goat anti-Rabbit IgG H&L (IRDye®800CW) preadsorbed ([ab216773](#)) and Goat anti-Mouse IgG H&L (IRDye®680RD) preadsorbed ([ab216776](#)) secondary antibodies at 1 in 20000 dilution for 1 hour at room temperature before imaging.



Immunohistochemistry (Formalin/PFA-fixed paraffin-embedded sections) - Anti-Desmoglein 2/DSG2 antibody [EPR6768] (ab150372)

Immunohistochemical analysis of paraffin embedded Human thyroid gland papillary carcinoma tissue labeling Desmoglein 2/DSG2 with ab150372 at a 1/250 dilution.

Perform heat mediated antigen retrieval before commencing with IHC staining protocol.



Western blot - Anti-Desmoglein 2/DSG2 antibody [EPR6768] (ab150372)

All lanes : Anti-Desmoglein 2/DSG2 antibody [EPR6768] (ab150372) at 1/10000 dilution

Lane 1 : Trypsinised HAP1 cell lysate

Lane 2 : Scraped HAP1 cell lysate

Lane 3 : Trypsinised DSG2 knockout HAP1 cell lysate

Lane 4 : Scraped DSG2 knockout HAP1 cell lysate

Lane 5 : Trypsinised A431 cell lysate

Lane 6 : Scraped A431 cell lysate

Lysates/proteins at 40 µg per lane.

Performed under reducing conditions.

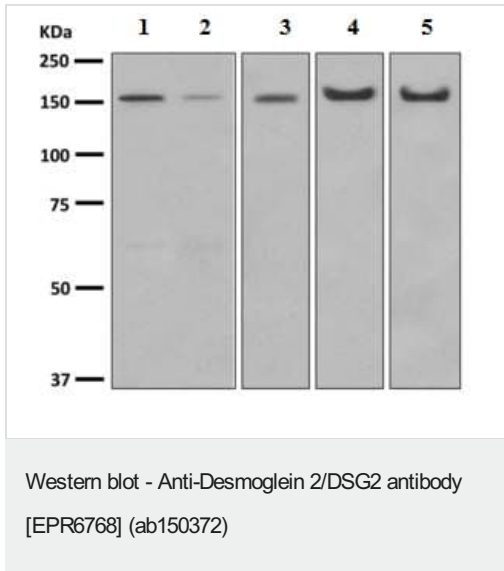
Predicted band size: 122 kDa

Observed band size: 95 kDa

Lanes 1 - 6: Merged signal (red and green). Green - ab150372 observed at 95 kDa. Red - loading control **ab8245** (Mouse anti-GAPDH antibody [6C5]) observed at 37kDa.

ab150372 was shown to react with Desmoglein 2 in wild-type HAP1 cells in western blot with loss of signal observed in DSG2 knockout sample. Wild-type and DSG2 knockout HAP1 cell lysates were subjected to SDS-PAGE. Membranes were blocked in 3%

milk in TBS-T (0.1% Tween[®]) before incubation with ab150372 and **ab8245** (Mouse anti-GAPDH antibody [6C5]) overnight at 4°C at a 1 in 10000 dilution and a 1 in 20000 dilution respectively. Blots were incubated with Goat anti-Rabbit IgG H&L (IRDye[®] 800CW) preabsorbed (**ab216773**) and Goat anti-Mouse IgG H&L (IRDye[®] 680RD) preabsorbed (**ab216776**) secondary antibodies at 1 in 20000 dilution for 1 hour at room temperature before imaging.



All lanes : Anti-Desmoglein 2/DSG2 antibody [EPR6768]
(ab150372) at 1/10000 dilution

Lane 1 : HepG2 cell lysate
Lane 2 : HeLa cell lysate
Lane 3 : Human fetal heart lysate
Lane 4 : mouse heart lysate
Lane 5 : rat heart lysate

Lysates/proteins at 10 µg per lane.

Secondary

All lanes : HRP labelled goat anti-rabbit at 1/2000 dilution

Predicted band size: 122 kDa

Why choose a recombinant antibody?

Research with confidence
Consistent and reproducible results

Long-term and scalable supply
Recombinant technology

Success from the first experiment
Confirmed specificity

Ethical standards compliant
Animal-free production

Anti-Desmoglein 2/DSG2 antibody [EPR6768]
(ab150372)

Please note: All products are "FOR RESEARCH USE ONLY. NOT FOR USE IN DIAGNOSTIC PROCEDURES"

Our Abpromise to you: Quality guaranteed and expert technical support

- Replacement or refund for products not performing as stated on the datasheet
- Valid for 12 months from date of delivery
- Response to your inquiry within 24 hours
- We provide support in Chinese, English, French, German, Japanese and Spanish
- Extensive multi-media technical resources to help you
- We investigate all quality concerns to ensure our products perform to the highest standards

If the product does not perform as described on this datasheet, we will offer a refund or replacement. For full details of the Abpromise, please visit <https://www.abcam.cn/abpromise> or contact our technical team.

Terms and conditions

- Guarantee only valid for products bought direct from Abcam or one of our authorized distributors