

# Anti-delta 1 Catenin/CAS (phospho Y291) antibody [EP2385Y] ab81274

RabMAb

## 1 图像

### 概述

产品名称	Anti-delta 1 Catenin/CAS (phospho Y291)抗体[EP2385Y]
描述	兔单克隆抗体[EP2385Y] to delta 1 Catenin/CAS (phospho Y291)
宿主	Rabbit
经测试应用	<b>适用于:</b> WB <b>不适用于:</b> Flow Cyt, ICC/IF, IHC-P or IP
种属反应性	<b>与反应:</b> Human
免疫原	Synthetic peptide. This information is proprietary to Abcam and/or its suppliers.
阳性对照	Jurkat cell lysate treated with pervanadate
常规说明	Our RabMAb <sup>®</sup> technology is a patented hybridoma-based technology for making rabbit monoclonal antibodies. For details on our patents, please refer to <a href="#">RabMAb<sup>®</sup> patents</a> .  The Life Science industry has been in the grips of a reproducibility crisis for a number of years. Abcam is leading the way in addressing this with our range of recombinant monoclonal antibodies and knockout edited cell lines for gold-standard validation. Please check that this product meets your needs before purchasing.  If you have any questions, special requirements or concerns, please send us an inquiry and/or contact our Support team ahead of purchase. Recommended alternatives for this product can be found below, along with publications, customer reviews and Q&As  Mouse, Rat: We have preliminary internal testing data to indicate this antibody may not react with these species. Please contact us for more information.

### 性能

形式	Liquid
存放说明	Shipped at 4°C. Upon delivery aliquot and store at -20°C. Avoid freeze / thaw cycles.
存储溶液	pH: 7.20 Preservative: 0.05% Sodium azide Constituents: 0.1% BSA, 40% Glycerol (glycerin, glycerine), 9.85% Tris glycine, 50% Tissue culture supernatant

纯度	Tissue culture supernatant
克隆	单克隆
克隆编号	EP2385Y
同种型	IgG

应用

The Abpromise guarantee      **Abpromise™**承诺保证使用ab81274于以下的经测试应用

“应用说明”部分 下显示的仅为推荐的起始稀释度;实际最佳的稀释度/浓度应由使用者检定。

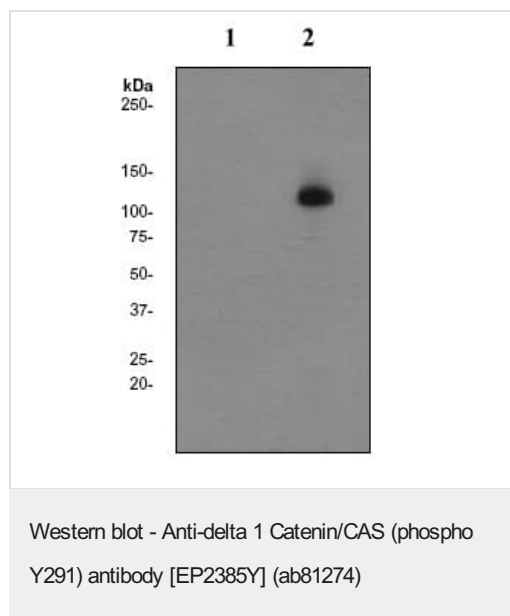
应用	Ab评论	说明
WB		1/10000 - 1/20000. Predicted molecular weight: 108 kDa.

应用说明      Is unsuitable for Flow Cyt,ICC/IF,IHC-P or IP.

靶标

功能	Binds to and inhibits the transcriptional repressor ZBTB33, which may lead to activation of target genes of the Wnt signaling pathway (By similarity). May associate with and regulate the cell adhesion properties of both C- and E-cadherins. Implicated both in cell transformation by SRC and in ligand-induced receptor signaling through the EGF, PDGF, CSF-1 and ERBB2 receptors. Promotes GLIS2 C-terminal cleavage.
组织特异性	Expressed in vascular endothelium.
序列相似性	Belongs to the beta-catenin family. Contains 10 ARM repeats.
结构域	A possible nuclear localization signal exists in all isoforms where Asp-626--631-Arg are deleted.
翻译后修饰	Phosphorylated by protein-tyrosine kinases. Dephosphorylated by PTPRJ.
细胞定位	Cytoplasm. Nucleus. Cell membrane. Interaction with GLIS2 promotes nuclear translocation (By similarity). NANOS1 induces its translocation from sites of cell-cell contact to the cytoplasm.

图片



**All lanes :** Anti-delta 1 Catenin/CAS (phospho Y291) antibody [EP2385Y] (ab81274) at 1/20000 dilution

**Lane 1 :** Jurkat cell lysate untreated

**Lane 2 :** Jurkat cell lysate treated with pervanadate

Lysates/proteins at 10 µg per lane.

#### Secondary

**All lanes :** HRP labelled goat anti rabbit at 1/2000 dilution

**Predicted band size:** 108 kDa

**Observed band size:** 108 kDa

**Please note:** All products are "FOR RESEARCH USE ONLY. NOT FOR USE IN DIAGNOSTIC PROCEDURES"

#### Our Abpromise to you: Quality guaranteed and expert technical support

- Replacement or refund for products not performing as stated on the datasheet
- Valid for 12 months from date of delivery
- Response to your inquiry within 24 hours
- We provide support in Chinese, English, French, German, Japanese and Spanish
- Extensive multi-media technical resources to help you
- We investigate all quality concerns to ensure our products perform to the highest standards

If the product does not perform as described on this datasheet, we will offer a refund or replacement. For full details of the Abpromise, please visit <https://www.abcam.cn/abpromise> or contact our technical team.

#### Terms and conditions

- Guarantee only valid for products bought direct from Abcam or one of our authorized distributors