

# Anti-delta 1 Catenin/CAS (phospho Y228) antibody [E205] ab32403

 **RabMAb**

**3 References**   **3 图像**

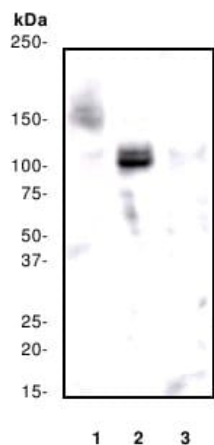
### 概述

产品名称	Anti-delta 1 Catenin/CAS (phospho Y228)抗体[E205]
描述	兔单克隆抗体[E205] to delta 1 Catenin/CAS (phospho Y228)
宿主	Rabbit
经测试应用	<b>适用于:</b> WB, IHC-P <b>不适用于:</b> Flow Cyt or ICC/IF
种属反应性	<b>与反应:</b> Human <b>预测可用于:</b> Mouse, Rat 
免疫原	Synthetic peptide corresponding to Human delta 1 Catenin/CAS (phospho Y228).
阳性对照	WB: HeLa whole cell lysate ( <a href="#">ab150035</a> ). IHC-P: Breast carcinoma.
常规说明	This product is a recombinant monoclonal antibody, which offers several advantages including: <ul style="list-style-type: none"> <li>- High batch-to-batch consistency and reproducibility</li> <li>- Improved sensitivity and specificity</li> <li>- Long-term security of supply</li> <li>- Animal-free production</li> </ul> For more information <a href="#">see here</a> . Our RabMAb <sup>®</sup> technology is a patented hybridoma-based technology for making rabbit monoclonal antibodies. For details on our patents, please refer to <a href="#">RabMAb<sup>®</sup> patents</a> .

### 性能

形式	Liquid
存放说明	Shipped at 4°C. Upon delivery aliquot and store at -20°C. Avoid freeze / thaw cycles.
存储溶液	pH: 7.20 Preservative: 0.01% Sodium azide Constituents: 49% PBS, 50% Glycerol (glycerin, glycerine), 0.05% BSA
纯度	Protein A purified
克隆	单克隆
克隆编号	E205

同种型	lgG	
应用		
The Abpromise guarantee <b>Abpromise™</b> 承诺保证使用ab32403于以下的经测试应用		
“应用说明”部分 下显示的仅为推荐的起始稀释度;实际最佳的稀释度/浓度应由使用者检定。		
应用	Ab评论	说明
WB		1/5000 - 1/20000. Detects a band of approximately 115 kDa (predicted molecular weight: 108 kDa).
IHC-P		1/50. Perform heat mediated antigen retrieval with citrate buffer pH 6 before commencing with IHC staining protocol.
应用说明	Is unsuitable for Flow Cyt or ICC/IF.	
靶标		
功能	Binds to and inhibits the transcriptional repressor ZBTB33, which may lead to activation of target genes of the Wnt signaling pathway (By similarity). May associate with and regulate the cell adhesion properties of both C- and E-cadherins. Implicated both in cell transformation by SRC and in ligand-induced receptor signaling through the EGF, PDGF, CSF-1 and ERBB2 receptors. Promotes GLIS2 C-terminal cleavage.	
组织特异性	Expressed in vascular endothelium.	
序列相似性	Belongs to the beta-catenin family. Contains 10 ARM repeats.	
结构域	A possible nuclear localization signal exists in all isoforms where Asp-626--631-Arg are deleted.	
翻译后修饰	Phosphorylated by protein-tyrosine kinases. Dephosphorylated by PTPRJ.	
细胞定位	Cytoplasm. Nucleus. Cell membrane. Interaction with GLIS2 promotes nuclear translocation (By similarity). NANOS1 induces its translocation from sites of cell-cell contact to the cytoplasm.	
图片		



Western blot - Anti-delta 1 Catenin/CAS (phospho Y228) antibody [E205] (ab32403)

**All lanes :** Anti-delta 1 Catenin/CAS (phospho Y228) antibody [E205] (ab32403)

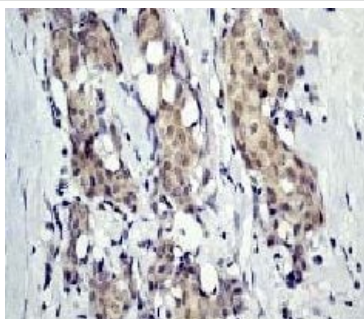
**Lane 1 :** HeLa cell lysate, untreated

**Lane 2 :** HeLa cell lysate, treated with Pervanadate

**Lane 3 :** HeLa cell lysate, treated with Phosphatase

**Predicted band size:** 108 kDa

**Observed band size:** 115 kDa



Immunohistochemistry (Formalin/PFA-fixed paraffin-embedded sections) - Anti-delta 1 Catenin/CAS (phospho Y228) antibody [E205] (ab32403)

Ab32403, at a 1/50 dilution, staining delta 1 Catenin/CAS in paraffin embedded breast carcinoma tissue sections by Immunohistochemistry.

Perform heat mediated antigen retrieval with citrate buffer pH 6 before commencing with IHC staining protocol.

### Why choose a recombinant antibody?



**Research with confidence**  
Consistent and reproducible results



**Long-term and scalable supply**  
Recombinant technology



**Success from the first experiment**  
Confirmed specificity



**Ethical standards compliant**  
Animal-free production

Anti-delta 1 Catenin/CAS (phospho Y228) antibody [E205] (ab32403)

**Please note:** All products are "FOR RESEARCH USE ONLY. NOT FOR USE IN DIAGNOSTIC PROCEDURES"

### **Our Abpromise to you: Quality guaranteed and expert technical support**

---

- Replacement or refund for products not performing as stated on the datasheet
- Valid for 12 months from date of delivery
- Response to your inquiry within 24 hours
  
- We provide support in Chinese, English, French, German, Japanese and Spanish
- Extensive multi-media technical resources to help you
- We investigate all quality concerns to ensure our products perform to the highest standards

If the product does not perform as described on this datasheet, we will offer a refund or replacement. For full details of the Abpromise, please visit <https://www.abcam.cn/abpromise> or contact our technical team.

### **Terms and conditions**

---

- Guarantee only valid for products bought direct from Abcam or one of our authorized distributors