

Anti-delta 1 Catenin/CAS (phospho S268) antibody [EPR2380] ab79545

重组 RabMAb

1 References **4 图像**

概述

产品名称	Anti-delta 1 Catenin/CAS (phospho S268)抗体[EPR2380]
描述	兔单克隆抗体[EPR2380] to delta 1 Catenin/CAS (phospho S268)
宿主	Rabbit
经测试应用	适用于: WB, IHC-P, ICC/IF 不适用于: Flow Cyt or IP
种属反应性	与反应: Human
免疫原	Synthetic peptide corresponding to Human delta 1 Catenin/CAS (phospho S268).
阳性对照	HeLa cell lysate treated with Calyculin A. A431 cells. Human breast carcinoma tissue.
常规说明	This product is a recombinant monoclonal antibody, which offers several advantages including: <ul style="list-style-type: none"> - High batch-to-batch consistency and reproducibility - Improved sensitivity and specificity - Long-term security of supply - Animal-free production For more information see here . Our RabMAb [®] technology is a patented hybridoma-based technology for making rabbit monoclonal antibodies. For details on our patents, please refer to RabMAb[®] patents . Mouse, Rat: We have preliminary internal testing data to indicate this antibody may not react with these species. Please contact us for more information.

性能

形式	Liquid
存放说明	Shipped at 4°C. Store at -20°C. Stable for 12 months at -20°C.
存储溶液	pH: 7.20 Preservative: 0.05% Sodium azide Constituents: 0.1% BSA, 40% Glycerol (glycerin, glycerine), 9.85% Tris glycine, 50% Tissue culture supernatant
纯度	Protein A purified

克隆	单克隆
克隆编号	EPR2380
同种型	IgG

应用

The Abpromise guarantee **Abpromise™承诺保证使用ab79545于以下的经测试应用**

“应用说明”部分 下显示的仅为推荐的起始稀释度;实际最佳的稀释度/浓度应由使用者检定。

应用	Ab评论	说明
WB		1/2500 - 1/5000. Detects a band of approximately 90-120 kDa (predicted molecular weight: 108 kDa).
IHC-P		1/100 - 1/250. Perform heat mediated antigen retrieval before commencing with IHC staining protocol.
ICC/IF		1/100 - 1/250.

应用说明 Is unsuitable for Flow Cyt or IP.

靶标

功能	Binds to and inhibits the transcriptional repressor ZBTB33, which may lead to activation of target genes of the Wnt signaling pathway (By similarity). May associate with and regulate the cell adhesion properties of both C- and E-cadherins. Implicated both in cell transformation by SRC and in ligand-induced receptor signaling through the EGF, PDGF, CSF-1 and ERBB2 receptors. Promotes GLIS2 C-terminal cleavage.
-----------	--

组织特异性	Expressed in vascular endothelium.
-------	------------------------------------

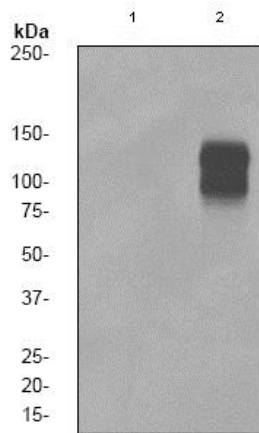
序列相似性	Belongs to the beta-catenin family. Contains 10 ARM repeats.
-------	---

结构域 A possible nuclear localization signal exists in all isoforms where Asp-626--631-Arg are deleted.

翻译后修饰 Phosphorylated by protein-tyrosine kinases. Dephosphorylated by PTPRJ.

细胞定位 Cytoplasm. Nucleus. Cell membrane. Interaction with GLIS2 promotes nuclear translocation (By similarity). NANOS1 induces its translocation from sites of cell-cell contact to the cytoplasm.

图片



Western blot - Anti-delta 1 Catenin/CAS (phospho S268) antibody [EPR2380] (ab79545)

All lanes : Anti-delta 1 Catenin/CAS (phospho S268) antibody [EPR2380] (ab79545) at 1/5000 dilution

Lane 1 : HeLa cell lysate

Lane 2 : HeLa cell lysate treated with Calyculin A

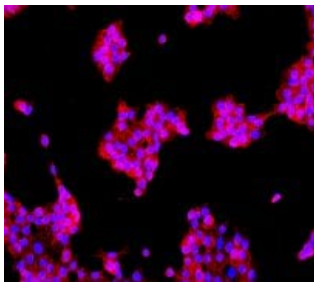
Lysates/proteins at 10 µg per lane.

Secondary

All lanes : HRP labelled goat anti-rabbit at 1/2000 dilution

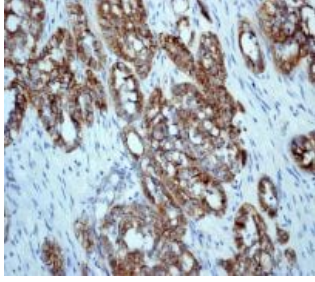
Predicted band size: 108 kDa

Observed band size: 90-120 kDa



Immunocytochemistry/ Immunofluorescence - Anti-delta 1 Catenin/CAS (phospho S268) antibody [EPR2380] (ab79545)

Immunofluorescent staining of delta 1 Catenin/CAS in A431 cells using ab79545 at 1/100 dilution.

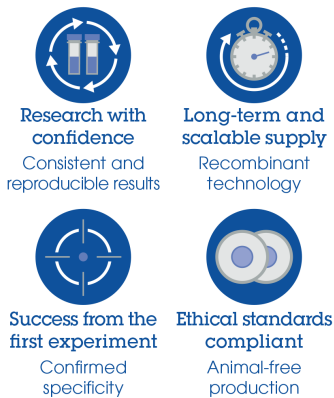


Immunohistochemistry (Formalin/PFA-fixed paraffin-embedded sections) - Anti-delta 1 Catenin/CAS (phospho S268) antibody [EPR2380] (ab79545)

ab79545 at 1/100 dilution staining delta 1 Catenin/CAS in paraffin-embedded human breast carcinoma tissue by Immunohistochemistry.

Perform heat mediated antigen retrieval before commencing with IHC staining protocol.

Why choose a recombinant antibody?



Anti-delta 1 Catenin/CAS (phospho S268) antibody [EPR2380] (ab79545)

Please note: All products are "FOR RESEARCH USE ONLY. NOT FOR USE IN DIAGNOSTIC PROCEDURES"

Our Abpromise to you: Quality guaranteed and expert technical support

- Replacement or refund for products not performing as stated on the datasheet
- Valid for 12 months from date of delivery
- Response to your inquiry within 24 hours
- We provide support in Chinese, English, French, German, Japanese and Spanish
- Extensive multi-media technical resources to help you
- We investigate all quality concerns to ensure our products perform to the highest standards

If the product does not perform as described on this datasheet, we will offer a refund or replacement. For full details of the Abpromise, please visit <https://www.abcam.cn/abpromise> or contact our technical team.

Terms and conditions

- Guarantee only valid for products bought direct from Abcam or one of our authorized distributors