


Anti-delta 1 Catenin/CAS antibody ab72039

[1 References](#) [3 图像](#)

概述

产品名称	Anti-delta 1 Catenin/CAS抗体
描述	兔多克隆抗体to delta 1 Catenin/CAS
宿主	Rabbit
经测试应用	适用于: IHC-P, WB, IP
种属反应性	与反应: Mouse, Human 预测可用于: Rat, Rabbit, Horse, Guinea pig, Dog, Pig, Chimpanzee, Rhesus monkey, Gorilla, Orangutan, Platypus, Elephant 
免疫原	Synthetic peptide corresponding to Human delta 1 Catenin/CAS aa 75-125. Database link: NP_001322.1
阳性对照	HeLa, 293T and NIH3T3 whole cell lysates.
常规说明	<p>The Life Science industry has been in the grips of a reproducibility crisis for a number of years. Abcam is leading the way in addressing this with our range of recombinant monoclonal antibodies and knockout edited cell lines for gold-standard validation. Please check that this product meets your needs before purchasing.</p> <p>If you have any questions, special requirements or concerns, please send us an inquiry and/or contact our Support team ahead of purchase. Recommended alternatives for this product can be found below, along with publications, customer reviews and Q&As</p>

性能

形式	Liquid
存放说明	Shipped at 4°C. Upon delivery aliquot and store at -20°C. Avoid freeze / thaw cycles.
存储溶液	pH: 6.8 Preservative: 0.09% Sodium azide Constituents: 0.1% BSA, Tris buffered saline
纯度	Immunogen affinity purified
纯化说明	ab72039 was affinity purified using an epitope specific to delta 1 Catenin/CAS immobilized on solid support.
克隆	多克隆
同种型	IgG

应用

The Abpromise guarantee

Abpromise™ 承诺保证使用 ab72039 于以下的经测试应用

“应用说明”部分 下显示的仅为推荐的起始稀释度;实际最佳的稀释度/浓度应由使用者检定。

应用	Ab评论	说明
IHC-P		1/200 - 1/1000. Epitope retrieval with Tris-EDTA pH 9.0 is recommended.
WB		1/2000 - 1/10000. Detects a band of approximately 117 kDa (predicted molecular weight: 108 kDa).
IP		Use at 2-5 µg/mg of lysate.

靶标

功能

Binds to and inhibits the transcriptional repressor ZBTB33, which may lead to activation of target genes of the Wnt signaling pathway (By similarity). May associate with and regulate the cell adhesion properties of both C- and E-cadherins. Implicated both in cell transformation by SRC and in ligand-induced receptor signaling through the EGF, PDGF, CSF-1 and ERBB2 receptors. Promotes GLIS2 C-terminal cleavage.

组织特异性

Expressed in vascular endothelium.

序列相似性

Belongs to the beta-catenin family.

Contains 10 ARM repeats.

结构域

A possible nuclear localization signal exists in all isoforms where Asp-626--631-Arg are deleted.

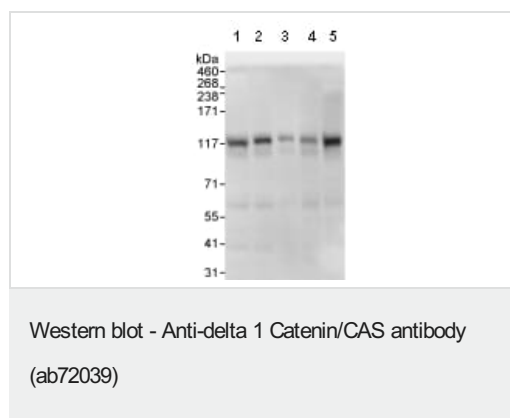
翻译后修饰

Phosphorylated by protein-tyrosine kinases. Dephosphorylated by PTPRJ.

细胞定位

Cytoplasm. Nucleus. Cell membrane. Interaction with GLIS2 promotes nuclear translocation (By similarity). NANOS1 induces its translocation from sites of cell-cell contact to the cytoplasm.

图片



All lanes : Anti-delta 1 Catenin/CAS antibody (ab72039) at 0.04 µg/ml

Lane 1 : HeLa whole cell lysate at 50 µg

Lane 2 : HeLa whole cell lysate at 15 µg

Lane 3 : HeLa whole cell lysate at 5 µg

Lane 4 : 293T whole cell lysate at 50 µg

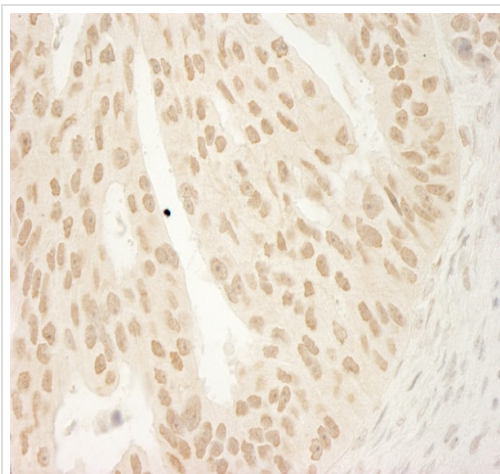
Lane 5 : NIH3T3 whole cell lysate at 50 µg

Developed using the ECL technique.

Predicted band size: 108 kDa

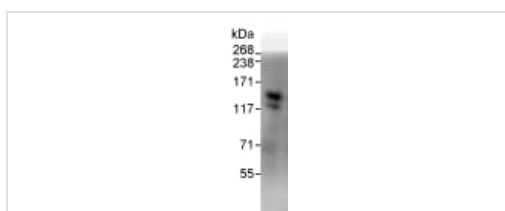
Observed band size: 117 kDa

Exposure time: 3 seconds



Immunohistochemistry (Formalin/PFA-fixed paraffin-embedded sections) - Anti-delta 1 Catenin/CAS antibody (ab72039)

Immunohistochemistry (Formalin/PFA-fixed paraffin-embedded sections) analysis of human ovarian carcinoma tissue labelling delta 1 Catenin/CAS with ab72039 at 1/1000 (0.2µg/ml). Detection: DAB.



Immunoprecipitation - Anti-delta 1 Catenin/CAS antibody (ab72039)

Detection of delta 1 Catenin/CAS by Western Blot of Immunoprecipitate.

ab72039 at 1µg/ml staining delta 1 Catenin/CAS in HeLa whole cell lysate immunoprecipitated using ab72039 at 3µg/mg lysate (1 mg/IP; 20% of IP loaded/lane).

Detection: Chemiluminescence with exposure time of 1 second.

Please note: All products are "FOR RESEARCH USE ONLY. NOT FOR USE IN DIAGNOSTIC PROCEDURES"

Our Abpromise to you: Quality guaranteed and expert technical support

- Replacement or refund for products not performing as stated on the datasheet
- Valid for 12 months from date of delivery
- Response to your inquiry within 24 hours
- We provide support in Chinese, English, French, German, Japanese and Spanish
- Extensive multi-media technical resources to help you
- We investigate all quality concerns to ensure our products perform to the highest standards

If the product does not perform as described on this datasheet, we will offer a refund or replacement. For full details of the Abpromise, please visit <https://www.abcam.cn/abpromise> or contact our technical team.

Terms and conditions

-
- Guarantee only valid for products bought direct from Abcam or one of our authorized distributors