

# Anti-DDX3 (phospho T322) antibody ab61043

**1 References**   **1 图像**

### 概述

产品名称	Anti-DDX3 (phospho T322)抗体
描述	兔多克隆抗体to DDX3 (phospho T322)
宿主	Rabbit
经测试应用	适用于: ICC/IF
种属反应性	与反应: Human 预测可用于: Mouse, Rat 
免疫原	Synthetic peptide corresponding to Human DDX3 aa 450-550 (phospho T322). Database link: <a href="#">O00571</a>
常规说明	<p>The Life Science industry has been in the grips of a reproducibility crisis for a number of years. Abcam is leading the way in addressing this with our range of recombinant monoclonal antibodies and knockout edited cell lines for gold-standard validation. Please check that this product meets your needs before purchasing.</p> <p>If you have any questions, special requirements or concerns, please send us an inquiry and/or contact our Support team ahead of purchase. Recommended alternatives for this product can be found below, along with publications, customer reviews and Q&amp;As</p>

### 性能

形式	Liquid
存放说明	Shipped at 4°C. Store at -20°C. Stable for 12 months at -20°C.
存储溶液	pH: 7.40 Preservative: 0.02% Sodium azide Constituents: PBS, 50% Glycerol (glycerin, glycerine), 0.87% Sodium chloride
纯度	Without Mg <sup>2+</sup> and Ca <sup>2+</sup> Immunogen affinity purified
纯化说明	Affinity purified from rabbit antiserum by affinity chromatography using epitope specific phosphopeptide. The antibody against non-phosphopeptide was removed by chromatography using non-phosphopeptide corresponding to the phosphorylation site
克隆	多克隆
同种型	IgG

## 应用

**The Abpromise guarantee**      **Abpromise™** 承诺保证使用 ab61043 于以下的经测试应用

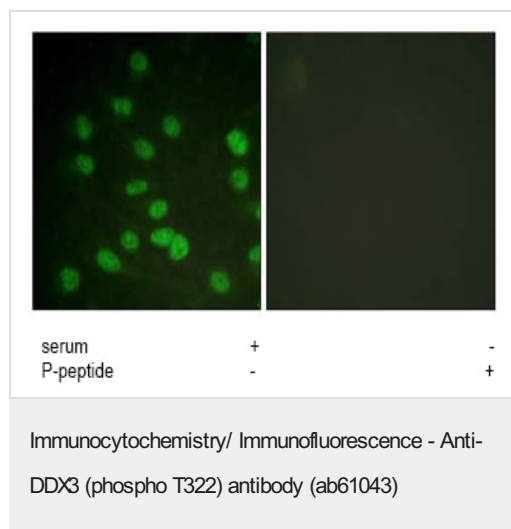
“应用说明”部分 下显示的仅为推荐的起始稀释度;实际最佳的稀释度/浓度应由使用者检定。

应用	Ab 评论	说明
ICC/IF		1/500 - 1/1000.

## 靶标

功能	ATP-dependent RNA helicase. Acts as a cofactor for XPO1-mediated nuclear export of incompletely spliced HIV-1 Rev RNAs. Also involved in HIV-1 replication. Interacts specifically with hepatitis C virus core protein resulting in a change in intracellular location.
序列相似性	Belongs to the DEAD box helicase family. DDX3/DED1 subfamily. Contains 1 helicase ATP-binding domain. Contains 1 helicase C-terminal domain.
细胞定位	Nucleus speckle. Cytoplasm. Located predominantly in nuclear speckles and, at low levels, throughout the cytoplasm. Located to the outer side of nuclear pore complexes (NPC). Shuttles between the nucleus and the cytoplasm in a XPO1-dependent manner.

## 图片



1/500-1/1000 ab61043 staining phosphorylated DDX3 on HuvEc cells treated with 20% serum for 30 minutes, only in the absence of the immunizing phosphopeptide.

**Please note:** All products are "FOR RESEARCH USE ONLY. NOT FOR USE IN DIAGNOSTIC PROCEDURES"

## Our Abpromise to you: Quality guaranteed and expert technical support

- Replacement or refund for products not performing as stated on the datasheet
- Valid for 12 months from date of delivery

- Response to your inquiry within 24 hours
- We provide support in Chinese, English, French, German, Japanese and Spanish
- Extensive multi-media technical resources to help you
- We investigate all quality concerns to ensure our products perform to the highest standards

If the product does not perform as described on this datasheet, we will offer a refund or replacement. For full details of the Abpromise, please visit <https://www.abcam.cn/abpromise> or contact our technical team.

#### **Terms and conditions**

---

- Guarantee only valid for products bought direct from Abcam or one of our authorized distributors