

Anti-DDX28 antibody ab70821

3 References **2 图像**

概述

产品名称	Anti-DDX28抗体
描述	兔多克隆抗体to DDX28
宿主	Rabbit
经测试应用	适用于: IP, WB
种属反应性	与反应: Human 预测可用于: Chimpanzee, Gorilla 
免疫原	Synthetic peptide corresponding to a region between residue 500 and the C-terminus (residue 540) of human DDX28 (NP_060850.1).
阳性对照	HeLa and 293T whole cell lysates.
常规说明	<p>The Life Science industry has been in the grips of a reproducibility crisis for a number of years. Abcam is leading the way in addressing this with our range of recombinant monoclonal antibodies and knockout edited cell lines for gold-standard validation. Please check that this product meets your needs before purchasing.</p> <p>If you have any questions, special requirements or concerns, please send us an inquiry and/or contact our Support team ahead of purchase. Recommended alternatives for this product can be found below, along with publications, customer reviews and Q&As</p>

性能

形式	Liquid
存放说明	Shipped at 4°C. Upon delivery aliquot and store at -20°C. Avoid freeze / thaw cycles.
存储溶液	<p>pH: 7</p> <p>Preservative: 0.09% Sodium azide</p> <p>Constituents: 1.815% Tris, 1.764% Sodium citrate, 0.021% PBS</p>
纯度	Immunogen affinity purified
克隆	多克隆
同种型	IgG

应用

The Abpromise guarantee

Abpromise™ 承诺保证使用 ab70821 于以下的经测试应用

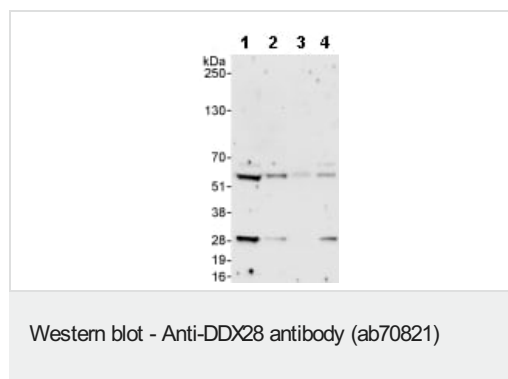
“应用说明”部分 下显示的仅为推荐的起始稀释度;实际最佳的稀释度/浓度应由使用者检定。

应用	Ab 评论	说明
IP		Use at 2 µg/mg of lysate.
WB		1/1000 - 1/5000. Detects a band of approximately 60 kDa (predicted molecular weight: 60 kDa).

靶标

功能	May be involved in RNA processing or transport. Has RNA and Mg(2+)-dependent ATPase activity.
组织特异性	Expressed in all tissues tested, including brain, placenta, lung, liver, skeletal muscle, kidney, pancreas, leukocytes, colon, small intestine, ovary and prostate.
序列相似性	Belongs to the DEAD box helicase family. Contains 1 helicase ATP-binding domain. Contains 1 helicase C-terminal domain.
细胞定位	Nucleus. Mitochondrion. Transported between these two compartments. Nuclear localization depends on active RNA polymerase II transcription.

图片



All lanes : Anti-DDX28 antibody (ab70821) at 0.4 µg/ml

Lane 1 : HeLa whole cell lysate at 50 µg

Lane 2 : HeLa whole cell lysate at 15 µg

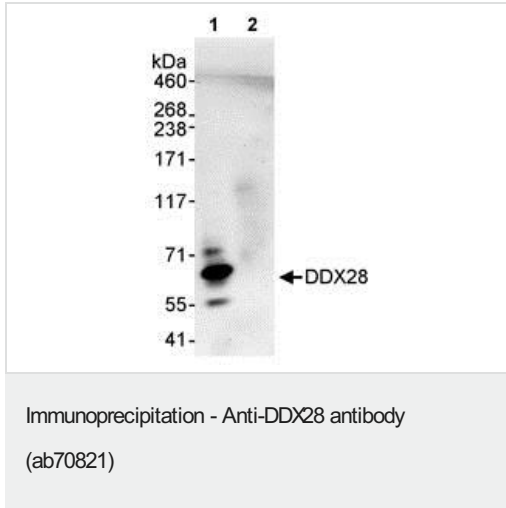
Lane 3 : HeLa whole cell lysate at 5 µg

Lane 4 : 293T whole cell lysate at 50 µg

Predicted band size: 60 kDa

Observed band size: 60 kDa

Additional bands at: 28 kDa. We are unsure as to the identity of these extra bands.



Detection of Human DDX28 by Immunoprecipitation in Whole cell lysate from HeLa cells (1 mg for IP, 20% of IP loaded), using ab70821 at 3 µg/mg lysate (Lane 1). Lane 2 represents rabbit IgG IP control. Subsequent Western blot detection of DDX28 was performed using ab70821 at 1 µg/ml.

Please note: All products are "FOR RESEARCH USE ONLY. NOT FOR USE IN DIAGNOSTIC PROCEDURES"

Our Abpromise to you: Quality guaranteed and expert technical support

- Replacement or refund for products not performing as stated on the datasheet
- Valid for 12 months from date of delivery
- Response to your inquiry within 24 hours
- We provide support in Chinese, English, French, German, Japanese and Spanish
- Extensive multi-media technical resources to help you
- We investigate all quality concerns to ensure our products perform to the highest standards

If the product does not perform as described on this datasheet, we will offer a refund or replacement. For full details of the Abpromise, please visit <https://www.abcam.cn/abpromise> or contact our technical team.

Terms and conditions

- Guarantee only valid for products bought direct from Abcam or one of our authorized distributors