


# Anti-DDX24 antibody ab70463

[1 References](#) [2 图像](#)

### 概述

产品名称	Anti-DDX24抗体
描述	兔多克隆抗体to DDX24
宿主	Rabbit
经测试应用	适用于: IP, WB
种属反应性	与反应: Mouse, Human 预测可用于: Chimpanzee, Rhesus monkey, Gorilla, Orangutan 
免疫原	Synthetic peptide corresponding to a region between residue 325 and 375 of Human DDX24 (NP_065147.1)
阳性对照	WB: HeLa, HEK293T, NIH/3T3 whole cell lysates. IP: HeLa
常规说明	<p>The Life Science industry has been in the grips of a reproducibility crisis for a number of years. Abcam is leading the way in addressing this with our range of recombinant monoclonal antibodies and knockout edited cell lines for gold-standard validation. Please check that this product meets your needs before purchasing.</p> <p>If you have any questions, special requirements or concerns, please send us an inquiry and/or contact our Support team ahead of purchase. Recommended alternatives for this product can be found below, along with publications, customer reviews and Q&amp;As</p>

### 性能

形式	Liquid
存放说明	Shipped at 4°C. Upon delivery aliquot and store at -20°C. Avoid freeze / thaw cycles.
存储溶液	pH: 7 Preservative: 0.09% Sodium azide Constituents: 1.815% Tris, 1.764% Sodium citrate, 0.021% PBS
纯度	Immunogen affinity purified
纯化说明	Antibody was affinity purified using an epitope specific to DDX24 immobilized on solid support
克隆	多克隆
同种型	IgG

**The Abpromise guarantee**      **Abpromise™**承诺保证使用ab70463于以下的经测试应用

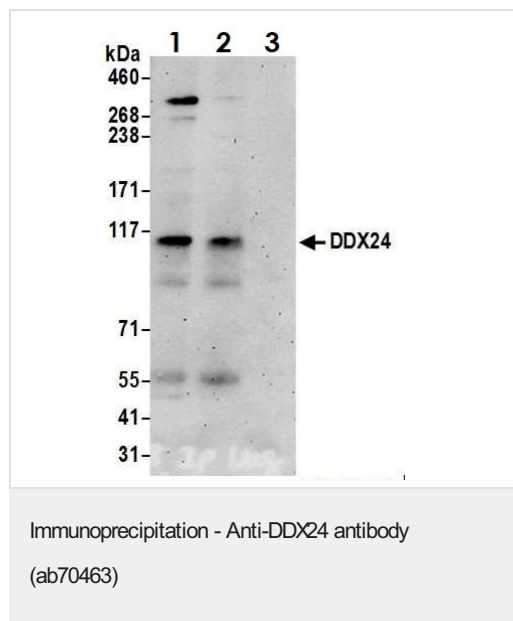
“应用说明”部分 下显示的仅为推荐的起始稀释度;实际最佳的稀释度/浓度应由使用者检定。

应用	Ab评论	说明
IP		Use at 2-5 µg/mg of lysate.
WB		1/1000 - 1/5000. Detects a band of approximately 120 kDa (predicted molecular weight: 97 kDa).

**靶标**

功能	ATP-dependent RNA helicase.
组织特异性	Ubiquitous. Most abundant in heart and brain, but with lowest levels in thymus and small intestine.
序列相似性	Belongs to the DEAD box helicase family. DDX24/MAK5 subfamily. Contains 1 helicase ATP-binding domain. Contains 1 helicase C-terminal domain.
翻译后修饰	Phosphorylated upon DNA damage, probably by ATM or ATR.

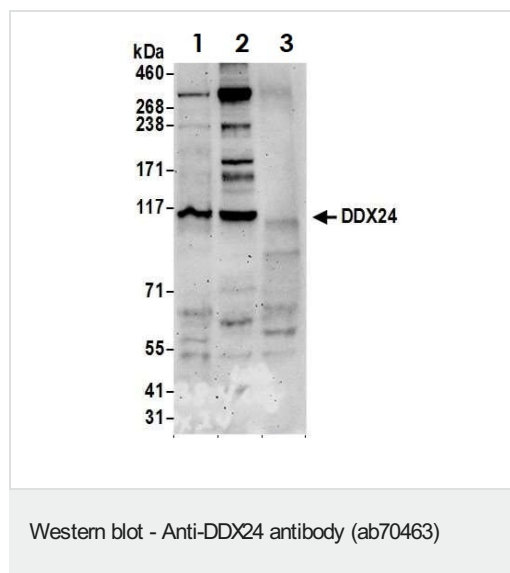
**图片**



DDX24 was immunoprecipitated from HeLa whole cell lysate (1 mg per IP reaction, 20% loaded) with ab70463 at 6 µg per reaction. Western blot was performed on the immunoprecipitate using ab70463 at 1 µg/mL.

Lane 1: ab70463 IP in HeLa whole cell lysate.  
Lane 2: ab70463 IP in HeLa whole cell lysate.  
Lane 3: Control IgG in HeLa whole cell lysate.

Detection: Chemiluminescence with an exposure time of 3 minutes



**All lanes :** Anti-DDX24 antibody (ab70463) at 0.4 µg/ml

**Lane 1 :** HeLa whole cell lysate

**Lane 2 :** HEK293T whole cell lysate

**Lane 3 :** NIH/3T3 whole cell lysate

Lysates/proteins at 50 µg per lane.

**Predicted band size:** 97 kDa

**Exposure time:** 3 minutes

**Please note:** All products are "FOR RESEARCH USE ONLY. NOT FOR USE IN DIAGNOSTIC PROCEDURES"

### Our Abpromise to you: Quality guaranteed and expert technical support

- Replacement or refund for products not performing as stated on the datasheet
- Valid for 12 months from date of delivery
- Response to your inquiry within 24 hours
- We provide support in Chinese, English, French, German, Japanese and Spanish
- Extensive multi-media technical resources to help you
- We investigate all quality concerns to ensure our products perform to the highest standards

If the product does not perform as described on this datasheet, we will offer a refund or replacement. For full details of the Abpromise, please visit <https://www.abcam.cn/abpromise> or contact our technical team.

### Terms and conditions

- Guarantee only valid for products bought direct from Abcam or one of our authorized distributors