

Anti-DDX11 antibody ab66971

1 References [1 图像](#)

概述

产品名称	Anti-DDX11抗体
描述	小鼠多克隆抗体to DDX11
宿主	Mouse
经测试应用	适用于: WB
种属反应性	与反应: Human
免疫原	Recombinant full length protein within Human DDX11. The exact immunogen sequence used to generate this antibody is proprietary information. If additional detail on the immunogen is needed to determine the suitability of the antibody for your needs, please contact our Scientific Support team to discuss your requirements.
阳性对照	transfected 293T cell lysate
常规说明	<p>The Life Science industry has been in the grips of a reproducibility crisis for a number of years. Abcam is leading the way in addressing this with our range of recombinant monoclonal antibodies and knockout edited cell lines for gold-standard validation. Please check that this product meets your needs before purchasing.</p> <p>If you have any questions, special requirements or concerns, please send us an inquiry and/or contact our Support team ahead of purchase. Recommended alternatives for this product can be found below, along with publications, customer reviews and Q&As</p>

性能

形式	Liquid
存放说明	Shipped at 4°C. Upon delivery aliquot and store at -20°C or -80°C. Avoid repeated freeze / thaw cycles.
存储溶液	<p>pH: 7.40</p> <p>Constituents: 8% Sodium chloride, 0.6% Dibasic monohydrogen sodium phosphate, 0.2% Monobasic dihydrogen potassium phosphate, 0.2% Potassium chloride, 91% Water</p>
纯度	Protein A purified
克隆	多克隆
同种型	IgG

应用

The Abpromise guarantee **Abpromise™**承诺保证使用ab66971于以下的经测试应用

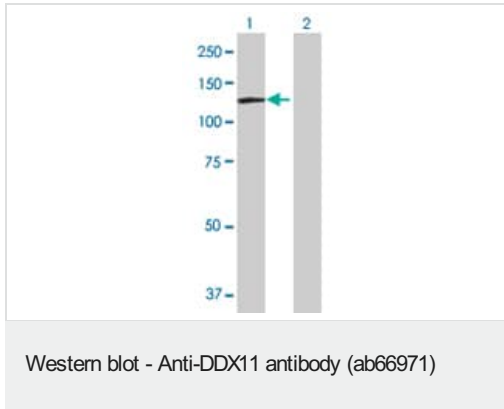
“应用说明”部分 下显示的仅为推荐的起始稀释度;实际最佳的稀释度/浓度应由使用者检定。

应用	Ab评论	说明
WB		1/500 - 1/100. Detects a band of approximately 125 kDa (predicted molecular weight: 108 kDa).

靶标

功能	DNA helicase involved in cellular proliferation. Possesses DNA-dependent ATPase and helicase activities. This helicase translocates on single-stranded DNA in the 5' to 3' direction in the presence of ATP and, to a lesser extent, dATP. Its unwinding activity requires a 5'-single-stranded region for helicase loading, since flush-ended duplex structures do not support unwinding. The helicase activity is capable of displacing duplex regions up to 100 bp, which can be extended to 500 bp by RPA or the cohesion establishment factor, the Ctf18-RFC (replication factor C) complex activities. Stimulates the flap endonuclease activity of FEN1. Required for normal sister chromatid cohesion. Required for recruitment of bovine papillomavirus type 1 regulatory protein E2 to mitotic chrmosomes and for viral genome maintenance. Required for maintaining the chromosome segregation and is essential for embryonic development and the prevention of aneuploidy. May function during either S, G2, or M phase of the cell cycle. Binds to both single- and double-stranded DNA.
组织特异性	Highly expressed in spleen, B-cells, thymus, testis, ovary, small intestine, and pancreas. Very low expression seen in the brain. Expressed in dividing cells and/or cells undergoing high levels of recombination. No expression is seen in cells signaled to terminally differentiate. Expressed in keratinocyte growth factor-stimulated cells but not in serum, EGF and IL1-beta-treated keratinocytes.
疾病相关	Defects in DDX11 are the cause of Warsaw breakage syndrome (WBRS) [MIM:613398]. It is a syndrome characterized by severe microcephaly, pre- and postnatal growth retardation, facial dysmorphism and abnormal skin pigmentation. Additional features include high arched palate, coloboma of the right optic disk, deafness, ventricular septal defect, toes and fingers abnormalities. At cellular level, drug-induced chromosomal breakage, a feature of Fanconi anemia, and sister chromatid cohesion defects, a feature of Roberts syndrome, coexist.
序列相似性	Belongs to the DEAD box helicase family. DEAH subfamily. DDX11/CHL1 sub-subfamily. Contains 1 helicase ATP-binding domain.
细胞定位	Nucleus. Nucleus > nucleolus. During the early stages of mitosis, localizes to condensed chromatin and is released from the chromatin with progression to metaphase. Also localizes to the spindle poles throughout mitosis and at the midbody at later stages of mitosis (metaphase to telophase). Co-localizes with bovine papillomavirus type 1 regulatory protein E2 at early stages of mitosis.

图片



All lanes : Anti-DDX11 antibody (ab66971) at 1/500 dilution

Lane 1 : DDX11 transfected 293T cell lysate

Lane 2 : Non-transfected 293T cell lysate

Lysates/proteins at 25 µg per lane.

Secondary

All lanes : Goat Anti-Mouse IgG (H&L)-HRP Conjugate at 1/2500 dilution

Predicted band size: 108 kDa

Observed band size: 125 kDa

Please note: All products are "FOR RESEARCH USE ONLY. NOT FOR USE IN DIAGNOSTIC PROCEDURES"

Our Abpromise to you: Quality guaranteed and expert technical support

- Replacement or refund for products not performing as stated on the datasheet
- Valid for 12 months from date of delivery
- Response to your inquiry within 24 hours
- We provide support in Chinese, English, French, German, Japanese and Spanish
- Extensive multi-media technical resources to help you
- We investigate all quality concerns to ensure our products perform to the highest standards

If the product does not perform as described on this datasheet, we will offer a refund or replacement. For full details of the Abpromise, please visit <https://www.abcam.cn/abpromise> or contact our technical team.

Terms and conditions

- Guarantee only valid for products bought direct from Abcam or one of our authorized distributors