

Anti-DDAH1 antibody ab2231

★★★★★ [3 Abreviews](#) [17 References](#) [5 图像](#)

概述

产品名称	Anti-DDAH1抗体
描述	山羊多克隆抗体to DDAH1
宿主	Goat
经测试应用	适用于: ICC, Flow Cyt, WB
种属反应性	与反应: Human 预测可用于: Cow 
免疫原	Synthetic peptide corresponding to Human DDAH1 aa 273-285 (C terminal). Sequence: TCCSVLINKKVDS Database link: O94760 (Peptide available as ab99047)  Run BLAST with  Run BLAST with
阳性对照	WB: HepG2 and LnCaP cell lysates. Human cerebellum, kidney and testes. ICC: HeLa and U20S cells Flow cyt: HeLa cells.
常规说明	<p>The Life Science industry has been in the grips of a reproducibility crisis for a number of years. Abcam is leading the way in addressing this with our range of recombinant monoclonal antibodies and knockout edited cell lines for gold-standard validation. Please check that this product meets your needs before purchasing.</p> <p>If you have any questions, special requirements or concerns, please send us an inquiry and/or contact our Support team ahead of purchase. Recommended alternatives for this product can be found below, along with publications, customer reviews and Q&As</p>

性能

形式	Liquid
存放说明	Shipped at 4°C. Upon delivery aliquot and store at -20°C or -80°C. Avoid repeated freeze / thaw cycles.
存储溶液	pH: 7.30 Preservative: 0.02% Sodium azide Constituents: Tris buffered saline, 0.5% BSA

纯度	Immunogen affinity purified
纯化说明	Purified from goat serum by ammonium sulphate precipitation followed by antigen affinity chromatography using the immunizing peptide.
克隆	多克隆
同种型	IgG

应用

The Abpromise guarantee Abpromise™ 承诺保证使用 ab2231 于以下的经测试应用

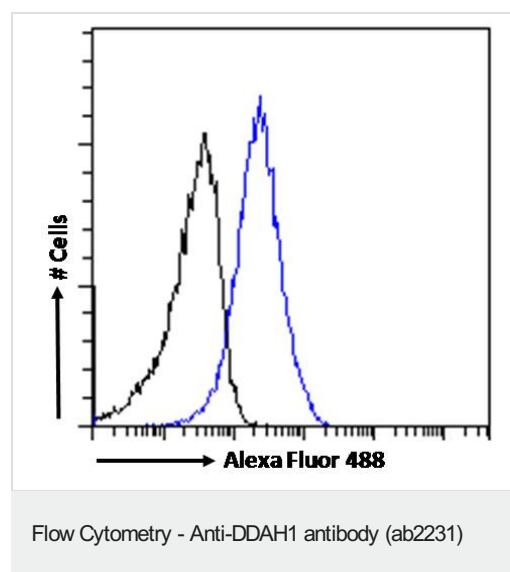
“应用说明”部分 下显示的仅为推荐的起始稀释度;实际最佳的稀释度/浓度应由使用者检定。

应用	Ab 评论	说明
ICC		Use a concentration of 10 µg/ml.
Flow Cyt		Use a concentration of 10 µg/ml.
WB	★★★★★ (3)	Use a concentration of 0.1 - 0.3 µg/ml. Detects a band of approximately 35 kDa (predicted molecular weight: 31 kDa). 1 hour primary incubation is recommended for this product.

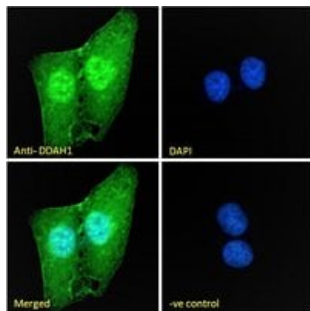
靶标

功能	Hydrolyzes N(G),N(G)-dimethyl-L-arginine (ADMA) and N(G)-monomethyl-L-arginine (MMA) which act as inhibitors of NOS. Has therefore a role in the regulation of nitric oxide generation.
组织特异性	Detected in brain, liver, kidney and pancreas, and at low levels in skeletal muscle.
序列相似性	Belongs to the DDAH family.

图片

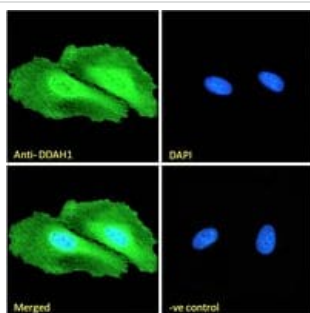


Flow cytometric analysis of paraformaldehyde fixed HeLa cells (blue line), permeabilized with 0.5% Triton using ab2231 at 10 µg/ml followed by Alexa Fluor 488 secondary antibody at 1 µg/ml. IgG control: Unimmunized goat IgG (black line) followed by Alexa Fluor 488 secondary antibody.



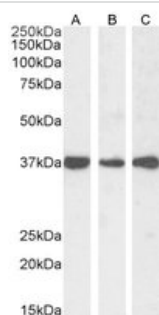
Immunocytochemistry - Anti-DDAH1 antibody (ab2231)

Immunofluorescence analysis of paraformaldehyde fixed U2OS cells, permeabilized with 0.15% Triton using ab2231 at 10ug/ml followed by Alexa Fluor 488 secondary antibody at 2ug/ml, showing nuclear and cytoplasmic staining. The nuclear stain is DAPI (blue). Negative control: Unimmunized goat IgG followed by Alexa Fluor 488 secondary antibody.



Immunocytochemistry - Anti-DDAH1 antibody (ab2231)

Immunofluorescence analysis of paraformaldehyde fixed HeLa cells, permeabilized with 0.15% Triton using ab2231 at 10ug/ml followed by Alexa Fluor 488 secondary antibody at 2ug/ml, showing nuclear and cytoplasmic staining. The nuclear stain is DAPI (blue). Negative control: Unimmunized goat IgG followed by Alexa Fluor 488 secondary antibody.



Western blot - Anti-DDAH1 antibody (ab2231)

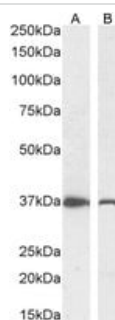
All lanes : Anti-DDAH1 antibody (ab2231) at 0.3 µg/ml

Lane 1 : Human cerebellum

Lane 2 : Human kidney

Lane 3 : Human testes

Predicted band size: 31 kDa



Western blot - Anti-DDAH1 antibody (ab2231)

All lanes : Anti-DDAH1 antibody (ab2231) at 0.3 µg/ml

Lane 1 : HepG2 cell lysate

Lane 2 : LnCaP cell lysate

Predicted band size: 31 kDa

Please note: All products are "FOR RESEARCH USE ONLY. NOT FOR USE IN DIAGNOSTIC PROCEDURES"

Our Abpromise to you: Quality guaranteed and expert technical support

- Replacement or refund for products not performing as stated on the datasheet
- Valid for 12 months from date of delivery
- Response to your inquiry within 24 hours

- We provide support in Chinese, English, French, German, Japanese and Spanish
- Extensive multi-media technical resources to help you
- We investigate all quality concerns to ensure our products perform to the highest standards

If the product does not perform as described on this datasheet, we will offer a refund or replacement. For full details of the Abpromise, please visit <https://www.abcam.cn/abpromise> or contact our technical team.

Terms and conditions

- Guarantee only valid for products bought direct from Abcam or one of our authorized distributors