

# Anti-DCXR antibody [4G4AF5] ab110283

**2 References**   **3 图像**

### 概述

产品名称	Anti-DCXR抗体[4G4AF5]
描述	小鼠单克隆抗体[4G4AF5] to DCXR
宿主	Mouse
经测试应用	适用于: WB, ICC/IF, Flow Cyt
种属反应性	与反应: Human
免疫原	Tissue, cells or virus. This information is considered to be commercially sensitive.
阳性对照	Isolated human liver mitochondria; Human HDFn cells; HL-60 cells.
常规说明	<p>This antibody clone is manufactured by Abcam. If you require a custom buffer formulation or conjugation for your experiments, please contact <a href="mailto:orders@abcam.com">orders@abcam.com</a>.</p> <p>The Life Science industry has been in the grips of a reproducibility crisis for a number of years. Abcam is leading the way in addressing this with our range of recombinant monoclonal antibodies and knockout edited cell lines for gold-standard validation. Please check that this product meets your needs before purchasing.</p> <p>If you have any questions, special requirements or concerns, please send us an inquiry and/or contact our Support team ahead of purchase. Recommended alternatives for this product can be found below, along with publications, customer reviews and Q&amp;As</p> <p>Product was previously marketed under the MitoSciences sub-brand.</p>

### 性能

形式	Liquid
存放说明	Shipped at 4°C. Store at +4°C. Do Not Freeze.
存储溶液	<p>pH: 7.5</p> <p>Preservative: 0.02% Sodium azide</p> <p>Constituent: HEPES buffered saline</p>
纯度	Affinity purified
纯化说明	The antibody was produced in vitro using hybridomas grown in serum-free medium, and then purified by affinity purification. Purity near homogeneity as judged by SDS-PAGE. Purity >95% by SDS-PAGE.
克隆	单克隆

克隆编号	4G4AF5
同种型	IgG1
轻链类型	kappa

应用

**The Abpromise guarantee**      **Abpromise™**承诺保证使用ab110283于以下的经测试应用

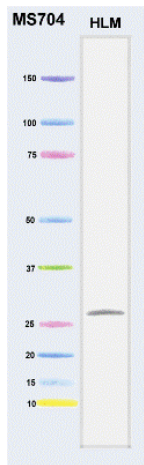
“应用说明”部分 下显示的仅为推荐的起始稀释度;实际最佳的稀释度/浓度应由使用者检定。

应用	Ab评论	说明
WB		Use a concentration of 1 µg/ml. Predicted molecular weight: 26 kDa.
ICC/IF		Use a concentration of 4 µg/ml.
Flow Cyt		Use a concentration of 1 µg/ml. <b>ab170190</b> - Mouse monoclonal IgG1, is suitable for use as an isotype control with this antibody.

靶标

功能	Catalyzes the NADPH-dependent reduction of several pentoses, tetroses, trioses, alpha-dicarbonyl compounds and L-xylulose. Participates in the uronate cycle of glucose metabolism. May play a role in the water absorption and cellular osmoregulation in the proximal renal tubules by producing xylitol, an osmolyte, thereby preventing osmolytic stress from occurring in the renal tubules.
组织特异性	Highly expressed in kidney, liver and epididymis. In the epididymis, it is mainly expressed in the proximal and distal sections of the corpus region. Weakly or not expressed in brain, lung, heart, spleen and testis.
疾病相关	Note=The enzyme defect in pentosuria has been shown to involve L-xylulose reductase. Essential pentosuria is an inborn error of metabolism characterized by the excessive urinary excretion of the pentose L-xylulose.
序列相似性	Belongs to the short-chain dehydrogenases/reductases (SDR) family.
细胞定位	Membrane. Probably recruited to membranes via an interaction with phosphatidylinositol.

图片



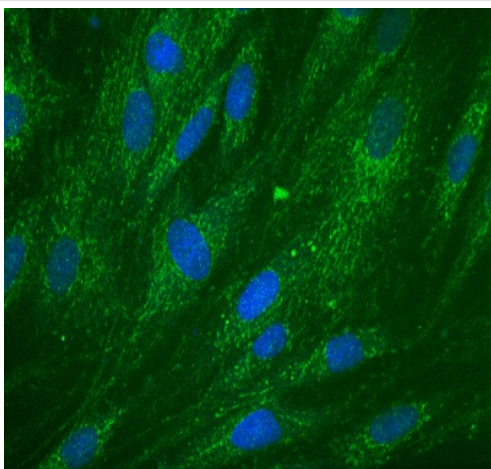
Western blot - Anti-DCXR antibody [4G4AF5] (ab110283)

Anti-DCXR antibody [4G4AF5] (ab110283) at 1 µg/ml + Human liver mitochondria at 20 µg

### Secondary

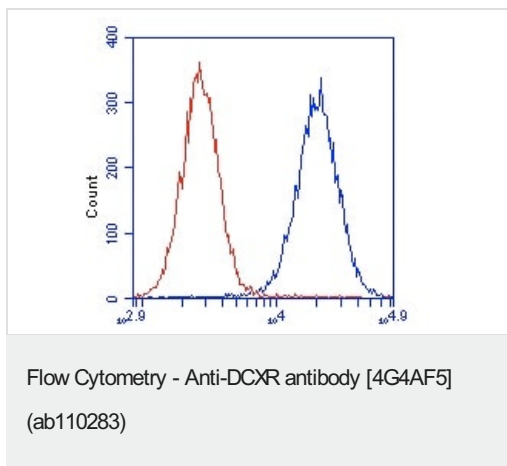
Goat anti-mouse conjugated to AP

**Predicted band size:** 26 kDa



Immunocytochemistry/ Immunofluorescence - Anti-DCXR antibody [4G4AF5] (ab110283)

Immunocytochemistry image of ab110283 stained Human HDFn cells. The cells were paraformaldehyde fixed (4%, 20 min) and Triton X-100 permeabilized (0.1%, 15min). The cells were incubated with ab110283 at 4 µg/ml for 2h at room temperature or over night at 4°C. The secondary antibody was (green) AlexaFluor® 488 goat anti-mouse IgG (H+L) used at a 1/1000 dilution for 1h. 10% Goat serum was used as the blocking agent for all blocking steps. DAPI was used to stain the cell nuclei (blue). Target protein locates mainly in the cell membrane.



HL-60 cells were stained with 1 µg/mL ab110283 (blue) or an equal amount of an isotype control antibody (red) and analyzed by flow cytometry.

**Please note:** All products are "FOR RESEARCH USE ONLY. NOT FOR USE IN DIAGNOSTIC PROCEDURES"

### Our Abpromise to you: Quality guaranteed and expert technical support

---

- Replacement or refund for products not performing as stated on the datasheet
- Valid for 12 months from date of delivery
- Response to your inquiry within 24 hours
- We provide support in Chinese, English, French, German, Japanese and Spanish
- Extensive multi-media technical resources to help you
- We investigate all quality concerns to ensure our products perform to the highest standards

If the product does not perform as described on this datasheet, we will offer a refund or replacement. For full details of the Abpromise, please visit <https://www.abcam.cn/abpromise> or contact our technical team.

### Terms and conditions

---

- Guarantee only valid for products bought direct from Abcam or one of our authorized distributors