


### Anti-DCLK2 antibody ab106639

**3 References**   **3 图像**

#### 概述

产品名称	Anti-DCLK2抗体
描述	兔多克隆抗体to DCLK2
宿主	Rabbit
特异性	Based on analysis of the immunogen sequence, we would expect this antibody to react with all three described isoforms of human DCLK2 (Q8N568-1, -2,-3) isoforms 1 and 3 of rat DCLK2 (Q5MPA9-1,-3) but not isoform 2 (Q5MPA9-2), and isoforms 1, 2, and 3 (Q6PGN3-1,-2,-3) of mouse DCLK2 but not isoform 4, 5, and 6 (Q6PGN3-4,-5,-6).
经测试应用	适用于: IHC-P, WB
种属反应性	与反应: Rat 预测可用于: Mouse 
免疫原	Synthetic peptide corresponding to Human DCLK2 (C terminal). Database link: <a href="#">NP_001035350</a>
阳性对照	Rat brain tissue and tissue lysate.
常规说明	<p>The Life Science industry has been in the grips of a reproducibility crisis for a number of years. Abcam is leading the way in addressing this with our range of recombinant monoclonal antibodies and knockout edited cell lines for gold-standard validation. Please check that this product meets your needs before purchasing.</p> <p>If you have any questions, special requirements or concerns, please send us an inquiry and/or contact our Support team ahead of purchase. Recommended alternatives for this product can be found below, along with publications, customer reviews and Q&amp;As</p>

#### 性能

形式	Liquid
存放说明	Shipped at 4°C. Store at 4°C (stable for up to 12 months).
存储溶液	pH: 7.2 Preservative: 0.02% Sodium azide Constituent: PBS
纯度	Protein A purified
纯化说明	ab106639 is purified by affinity chromatography via a peptide column.

克隆

多克隆

同种型

IgG

应用

The Abpromise guarantee

Abpromise™承诺保证使用ab106639于以下的经测试应用

“应用说明”部分 下显示的仅为推荐的起始稀释度;实际最佳的稀释度/浓度应由使用者检定。

应用	Ab评论	说明
IHC-P		Use a concentration of 5 µg/ml.
WB		Use a concentration of 1 - 2 µg/ml. Predicted molecular weight: 84 kDa.

靶标

功能

Protein kinase with a significantly reduced Ca2+/CAM affinity and dependence compared to other members of the CaMK family. May play a role in the down-regulation of CRE-dependent gene activation probably by phosphorylation of the CREB coactivator CRTC2/TORC2 and the resulting retention of TORC2 in the cytoplasm.

序列相似性

Belongs to the protein kinase superfamily. CAMK Ser/Thr protein kinase family. CaMK subfamily. Contains 2 doublecortin domains.  
Contains 1 protein kinase domain.

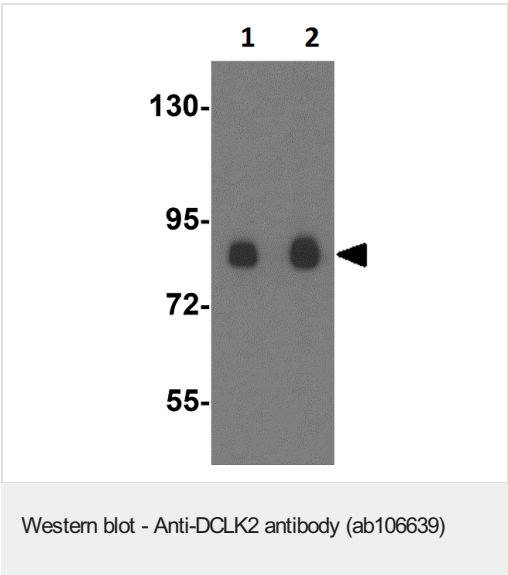
结构域

The doublecortin domains are involved in the colocalization with microtubules.

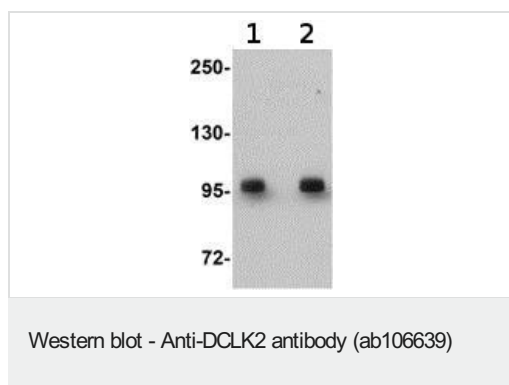
细胞定位

Cytoplasm > cytoskeleton. Colocalizes with microtubules.

图片



Western Blot of rat brain tissue lysate labeling DCLK2 with Anti-DCLK2 antibody (ab106639) at (1) 1 and (2) 2µg/ml.



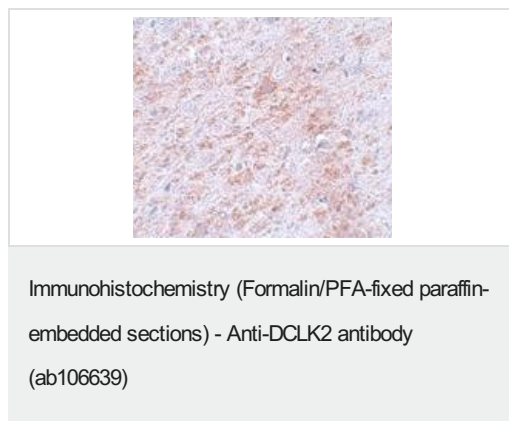
**Lane 1 :** Anti-DCLK2 antibody (ab106639) at 1 µg/ml

**Lane 2 :** Anti-DCLK2 antibody (ab106639) at 2 µg/ml

**All lanes :** Rat brain tissue lysate

Lysates/proteins at 15 µg per lane.

**Predicted band size:** 84 kDa



ab106639 at 5µg/ml, staining DCLK2 in Rat brain, using Immunohistochemistry, Formalin-fixed, Paraffin-embedded tissue.

**Please note:** All products are "FOR RESEARCH USE ONLY. NOT FOR USE IN DIAGNOSTIC PROCEDURES"

### Our Abpromise to you: Quality guaranteed and expert technical support

- Replacement or refund for products not performing as stated on the datasheet
- Valid for 12 months from date of delivery
- Response to your inquiry within 24 hours
- We provide support in Chinese, English, French, German, Japanese and Spanish
- Extensive multi-media technical resources to help you
- We investigate all quality concerns to ensure our products perform to the highest standards

If the product does not perform as described on this datasheet, we will offer a refund or replacement. For full details of the Abpromise, please visit <https://www.abcam.cn/abpromise> or contact our technical team.

### Terms and conditions

- Guarantee only valid for products bought direct from Abcam or one of our authorized distributors