

# Anti-DCAF12 antibody ab106707

## 2 图像

### 概述

产品名称	Anti-DCAF12抗体
描述	鸡多克隆抗体to DCAF12
宿主	Chicken
特异性	At least two isoforms of DCAF12 are known to exist; ab106707 will recognize both isoforms. ab106707 is predicted to not crossreact with other DCAF12 family members.
经测试应用	适用于: WB, ICC
种属反应性	与反应: Human
免疫原	A 15 amino acid peptide near the C terminal end of Human DCAF12 (NP_056212).
常规说明	<p>The Life Science industry has been in the grips of a reproducibility crisis for a number of years. Abcam is leading the way in addressing this with our range of recombinant monoclonal antibodies and knockout edited cell lines for gold-standard validation. Please check that this product meets your needs before purchasing.</p> <p>If you have any questions, special requirements or concerns, please send us an inquiry and/or contact our Support team ahead of purchase. Recommended alternatives for this product can be found below, along with publications, customer reviews and Q&amp;As</p>

### 性能

形式	Liquid
存放说明	Shipped at 4°C. Store at 4°C (stable for up to 12 months).
存储溶液	<p>pH: 7.2</p> <p>Preservative: 0.02% Sodium azide</p> <p>Constituent: PBS</p>
纯度	Immunogen affinity purified
克隆	多克隆
同种型	IgY

### 应用

The Abpromise guarantee

**Abpromise™** 承诺保证使用ab106707于以下的经测试应用

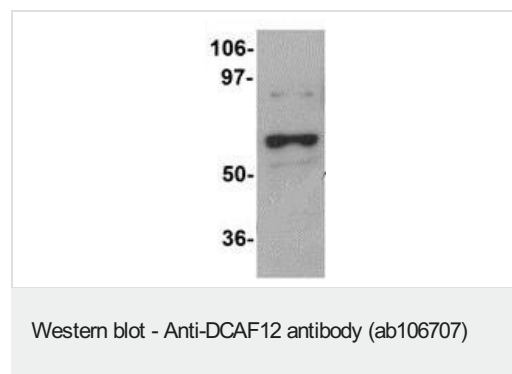
“应用说明”部分 下显示的仅为推荐的起始稀释度;实际最佳的稀释度/浓度应由使用者检定。

应用	Ab评论	说明
WB		Use a concentration of 1 - 2 µg/ml. Predicted molecular weight: 51 kDa.
ICC		Use a concentration of 2.5 µg/ml.

## 靶标

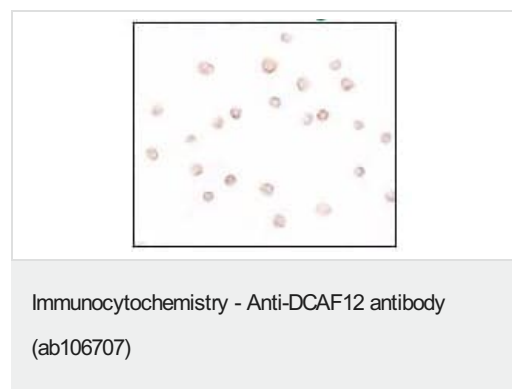
功能	May function as a substrate receptor for CUL4-DDB1 E3 ubiquitin-protein ligase complex.
组织特异性	Highly expressed in lung cancer tissues and some cancer cell lines. Restricted expression in normal testis.
通路	Protein modification; protein ubiquitination.
序列相似性	Belongs to the WD repeat DCAF12 family. Contains 4 WD repeats.
细胞定位	Cytoplasm. Cytoplasm > cytoskeleton > centrosome.

## 图片



Anti-DCAF12 antibody (ab106707) at 1 µg/ml + 293 cell lysate at 15 µg

**Predicted band size:** 51 kDa



ab106707, at 2.5 µg/ml, staining DCAF12 in 293 cells by Immunocytochemistry.

**Please note:** All products are "FOR RESEARCH USE ONLY. NOT FOR USE IN DIAGNOSTIC PROCEDURES"

### **Our Abpromise to you: Quality guaranteed and expert technical support**

---

- Replacement or refund for products not performing as stated on the datasheet
- Valid for 12 months from date of delivery
- Response to your inquiry within 24 hours
  
- We provide support in Chinese, English, French, German, Japanese and Spanish
- Extensive multi-media technical resources to help you
- We investigate all quality concerns to ensure our products perform to the highest standards

If the product does not perform as described on this datasheet, we will offer a refund or replacement. For full details of the Abpromise, please visit <https://www.abcam.cn/abpromise> or contact our technical team.

### **Terms and conditions**

---

- Guarantee only valid for products bought direct from Abcam or one of our authorized distributors