


Anti-DAZAP1 antibody ab106851

1 图像

概述

产品名称	Anti-DAZAP1抗体
描述	兔多克隆抗体to DAZAP1
宿主	Rabbit
经测试应用	适用于: WB
种属反应性	与反应: Mouse, Rat, Human 预测可用于: Chicken, Zebrafish 
免疫原	Synthetic peptide corresponding to Mouse DAZAP1 aa 350 to the C-terminus (C terminal) conjugated to keyhole limpet haemocyanin. (Peptide available as ab125891)
阳性对照	This antibody gave a positive signal in Human, Mouse and Rat Testis tissue lysates.
常规说明	<p>The Life Science industry has been in the grips of a reproducibility crisis for a number of years. Abcam is leading the way in addressing this with our range of recombinant monoclonal antibodies and knockout edited cell lines for gold-standard validation. Please check that this product meets your needs before purchasing.</p> <p>If you have any questions, special requirements or concerns, please send us an inquiry and/or contact our Support team ahead of purchase. Recommended alternatives for this product can be found below, along with publications, customer reviews and Q&As</p>

性能

形式	Liquid
存放说明	Shipped at 4°C. Store at +4°C short term (1-2 weeks). Upon delivery aliquot. Store at -20°C or -80°C. Avoid freeze / thaw cycle.
存储溶液	pH: 7.40 Preservative: 0.02% Sodium azide Constituents: PBS, 1% BSA Batches of this product that have a concentration < 1mg/ml may have BSA added as a stabilising agent. If you would like information about the formulation of a specific lot, please contact our scientific support team who will be happy to help.
纯度	Immunogen affinity purified

克隆

多克隆

同种型

IgG

应用

The Abpromise guarantee

Abpromise™承诺保证使用ab106851于以下的经测试应用

“应用说明”部分 下显示的仅为推荐的起始稀释度;实际最佳的稀释度/浓度应由使用者检定。

应用	Ab评论	说明
WB		Use a concentration of 1 µg/ml. Detects a band of approximately 50 kDa (predicted molecular weight: 43 kDa).

靶标

功能

RNA-binding protein, which may be required during spermatogenesis.

组织特异性

Mainly expressed in testis. Expressed to a lower level in thymus. Weakly or not expressed in heart, liver, brain, placenta, lung, skeletal muscle, kidney and pancreas.

序列相似性

Contains 2 RRM (RNA recognition motif) domains.

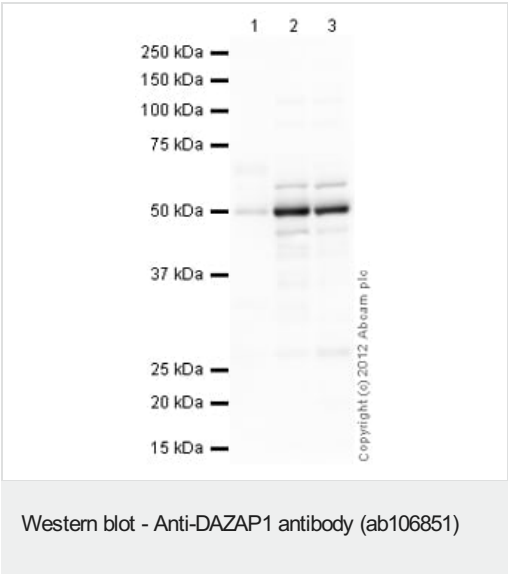
翻译后修饰

Phosphorylated upon DNA damage, probably by ATM or ATR.

细胞定位

Cytoplasm. Nucleus. Predominantly cytoplasmic (By similarity). Nuclear at some stages of spermatozoides development. In midpachytene spermatocytes, it is localized in both the cytoplasm and the nuclei and is clearly excluded from the sex vesicles. In round spermatids, it localizes mainly in the nuclei, whereas in elongated spermatids, it localizes to the cytoplasm.

图片



All lanes : Anti-DAZAP1 antibody (ab106851) at 1 µg/ml

Lane 1 : Human testis tissue lysate - total protein ([ab30257](#))

Lane 2 : Testis (Mouse) Tissue Lysate

Lane 3 : Testis (Rat) Tissue Lysate

Lysates/proteins at 10 µg per lane.

Secondary

All lanes : Goat Anti-Rabbit IgG H&L (HRP) preadsorbed ([ab97080](#)) at 1/5000 dilution

Developed using the ECL technique.

Performed under reducing conditions.

Predicted band size: 43 kDa

Observed band size: 50 kDa

Additional bands at: 46 kDa, 57 kDa. We are unsure as to the identity of these extra bands.

Exposure time: 1 minute

Please note: All products are "FOR RESEARCH USE ONLY. NOT FOR USE IN DIAGNOSTIC PROCEDURES"

Our Abpromise to you: Quality guaranteed and expert technical support

- Replacement or refund for products not performing as stated on the datasheet
- Valid for 12 months from date of delivery
- Response to your inquiry within 24 hours
- We provide support in Chinese, English, French, German, Japanese and Spanish
- Extensive multi-media technical resources to help you
- We investigate all quality concerns to ensure our products perform to the highest standards

If the product does not perform as described on this datasheet, we will offer a refund or replacement. For full details of the Abpromise, please visit <https://www.abcam.cn/abpromise> or contact our technical team.

Terms and conditions

- Guarantee only valid for products bought direct from Abcam or one of our authorized distributors