

Anti-DAB2IP antibody ab87811

★★★★★ [2 Abreviews](#) [18 References](#) [2 图像](#)

概述

产品名称	Anti-DAB2IP抗体
描述	兔多克隆抗体to DAB2IP
宿主	Rabbit
经测试应用	适用于: WB, IP
种属反应性	与反应: Mouse, Human 预测可用于: Rat 
免疫原	Synthetic peptide corresponding to Human DAB2IP aa 850-950. Database link: Q5VWQ8
阳性对照	WB: human HeLa, mouse TCKMK-1, Renca, 4T1 and CT26.WT cells IP: HeLa cells
常规说明	<p>The Life Science industry has been in the grips of a reproducibility crisis for a number of years. Abcam is leading the way in addressing this with our range of recombinant monoclonal antibodies and knockout edited cell lines for gold-standard validation. Please check that this product meets your needs before purchasing.</p> <p>If you have any questions, special requirements or concerns, please send us an inquiry and/or contact our Support team ahead of purchase. Recommended alternatives for this product can be found below, along with publications, customer reviews and Q&As</p>

性能

形式	Liquid
存放说明	Shipped at 4°C. Upon delivery aliquot and store at -20°C. Avoid freeze / thaw cycles.
存储溶液	pH: 6.8 Preservative: 0.09% Sodium azide Constituents: 0.1% BSA, Tris buffered saline
纯度	Immunogen affinity purified
纯化说明	ab87811 was affinity purified using an epitope specific to DAB2IP immobilized on solid support.
克隆	多克隆
同种型	IgG

The Abpromise guarantee **Abpromise™**承诺保证使用ab87811于以下的经测试应用

“应用说明”部分 下显示的仅为推荐的起始稀释度;实际最佳的稀释度/浓度应由使用者检定。

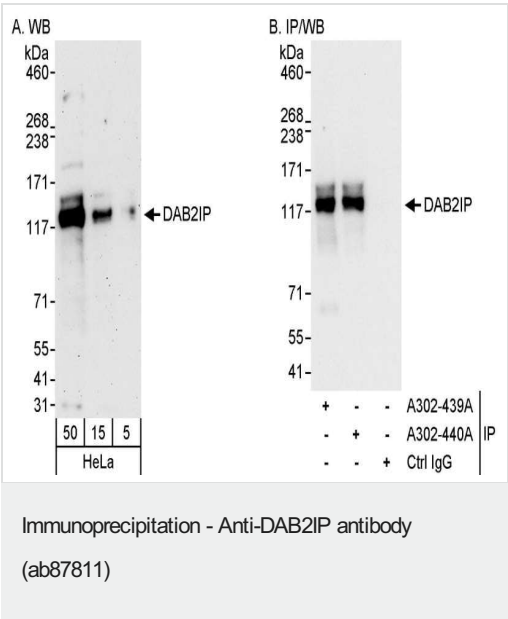
应用	Ab评论	说明
WB	★★★★★ (2)	1/2000 - 1/10000. Predicted molecular weight: 132 kDa.
IP		Use at 2-5 µg/mg of lysate.

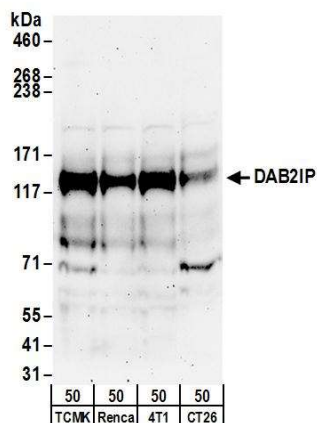
靶标

相关性 DAB2IP is a Ras GTPase-activating protein (GAP) that acts as a tumor suppressor gene and is inactivated by methylation in prostate and breast cancers. It also interacts with MAP3K5 to disrupt the association of MAP3K5 with the inhibitory 14-3-3 complex.

细胞定位 Cytoplasmic

图片





Western blot - Anti-DAB2IP antibody (ab87811)

All lanes : Anti-DAB2IP antibody (ab87811) at 0.1 µg/ml

Lane 1 : TCKMK-1 (mouse kidney epithelial cell line) whole cell lysate

Lane 2 : Renca (murine renal carcinoma cell line) whole cell lysate

Lane 3 : 4T1 (murine mammary carcinoma cell line) whole cell lysate

Lane 4 : CT26.WT (mouse colon carcinoma cell line) whole cell lysate

Predicted band size: 132 kDa

Please note: All products are "FOR RESEARCH USE ONLY. NOT FOR USE IN DIAGNOSTIC PROCEDURES"

Our Abpromise to you: Quality guaranteed and expert technical support

- Replacement or refund for products not performing as stated on the datasheet
- Valid for 12 months from date of delivery
- Response to your inquiry within 24 hours
- We provide support in Chinese, English, French, German, Japanese and Spanish
- Extensive multi-media technical resources to help you
- We investigate all quality concerns to ensure our products perform to the highest standards

If the product does not perform as described on this datasheet, we will offer a refund or replacement. For full details of the Abpromise, please visit <https://www.abcam.cn/abpromise> or contact our technical team.

Terms and conditions

- Guarantee only valid for products bought direct from Abcam or one of our authorized distributors