

Anti-Cytomegalovirus Glycoprotein B antibody [2F12] ab6499

★★★★★ [1 Abreviews](#) [14 References](#) [5 图像](#)

概述

产品名称	Anti-Cytomegalovirus Glycoprotein B抗体[2F12]
描述	小鼠单克隆抗体[2F12] to Cytomegalovirus Glycoprotein B
宿主	Mouse
经测试应用	适用于: WB, ELISA, ICC/IF
种属反应性	与反应: Human cytomegalovirus
免疫原	Tissue, cells or virus corresponding to Human Cytomegalovirus Glycoprotein B. Human Cytomegalovirus (AD169) infected human fibroblast cells
表位	Epitope has not been mapped.
常规说明	<p>The Life Science industry has been in the grips of a reproducibility crisis for a number of years. Abcam is leading the way in addressing this with our range of recombinant monoclonal antibodies and knockout edited cell lines for gold-standard validation. Please check that this product meets your needs before purchasing.</p> <p>If you have any questions, special requirements or concerns, please send us an inquiry and/or contact our Support team ahead of purchase. Recommended alternatives for this product can be found below, along with publications, customer reviews and Q&As</p>

性能

形式	Liquid
存放说明	Shipped at 4°C. Upon delivery aliquot and store at -20°C or -80°C. Avoid repeated freeze / thaw cycles.
存储溶液	pH: 7.40 Constituent: PBS
纯度	Protein A purified
克隆	单克隆
克隆编号	2F12
骨髓瘤	NS1/1-Ag4-1
同种型	IgG1
轻链类型	kappa

应用

The Abpromise guarantee **Abpromise™**承诺保证使用ab6499于以下的经测试应用

“应用说明”部分 下显示的仅为推荐的起始稀释度;实际最佳的稀释度/浓度应由使用者检定。

应用	Ab评论	说明
WB	★★★★★ (1)	
ELISA		
ICC/IF		

应用说明 Immunofluorescence titer 1+ @ 1:12,800, IFA is tested with acetone fixtation.
ELISA titer 0.100 @ 1:102,400
Western Blot > 1:4,000

靶标

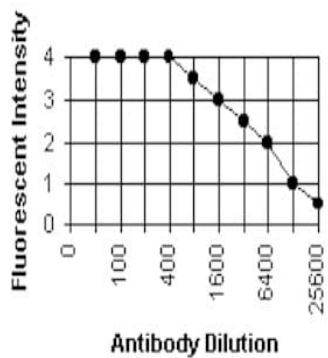
相关性 Human cytomegalovirus (HCMV) glycoprotein B (gB) is an abundant virion envelope protein that has been shown to be essential for the infectivity of HCMV. HCMV gB is also one of the most immunogenic virus-encoded proteins, and a significant fraction of virus neutralizing antibodies are directed at gB.

细胞定位 Virus envelope.

图片

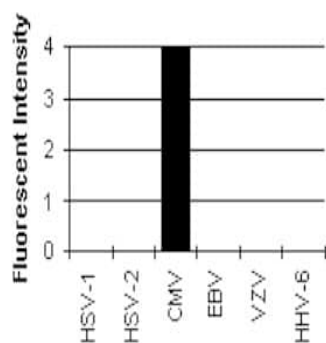


See protocol for procedure. Procedure uses 10-well CMV slides and anti-Mouse-FITC F(ab')₂ w/ counterstain.



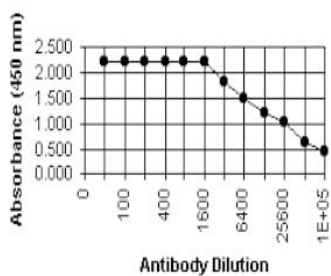
See protocol for procedure. Procedure uses 10-well CMV slides and anti-Mouse-FITC F(ab')₂ w/ counterstain.

Immunocytochemistry/ Immunofluorescence - Anti-Cytomegalovirus Glycoprotein B antibody [2F12] (ab6499)



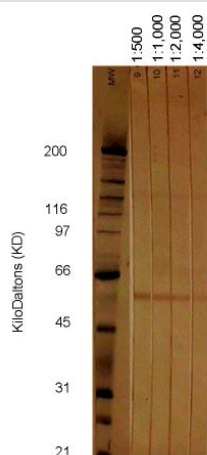
Determined by IFA (see protocol section) at an antibody dilution of 1:100 with anti-Mouse-FITC F(ab')₂ w/ counterstain.

Immunocytochemistry/ Immunofluorescence - Anti-Cytomegalovirus Glycoprotein B antibody [2F12] (ab6499)



ELISA - Anti-Cytomegalovirus Glycoprotein B antibody [2F12] (ab6499)

See protocol for procedure. Antigen is CMV Infected Cell Extract coated at a dilution of 1:100.



Western blot - Anti-Cytomegalovirus Glycoprotein B antibody [2F12] (ab6499)

See protocol for procedure. Antigen is CMV Infected Cell Extract at 10 µg/cm.

See protocol for procedure. Antigen is CMV Infected Cell Extract at 10 µg/cm.

Please note: All products are "FOR RESEARCH USE ONLY. NOT FOR USE IN DIAGNOSTIC PROCEDURES"

Our Abpromise to you: Quality guaranteed and expert technical support

- Replacement or refund for products not performing as stated on the datasheet
- Valid for 12 months from date of delivery
- Response to your inquiry within 24 hours
- We provide support in Chinese, English, French, German, Japanese and Spanish
- Extensive multi-media technical resources to help you
- We investigate all quality concerns to ensure our products perform to the highest standards

If the product does not perform as described on this datasheet, we will offer a refund or replacement. For full details of the Abpromise, please visit <https://www.abcam.cn/abpromise> or contact our technical team.

Terms and conditions

- Guarantee only valid for products bought direct from Abcam or one of our authorized distributors