

Anti-Cytokeratin 20 antibody [SP33], prediluted ab64091

重组 RabMAb

2 图像

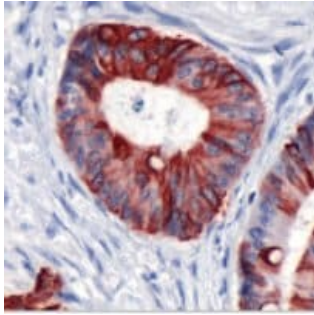
概述

| | |
|-------|---|
| 产品名称 | Anti-Cytokeratin 20抗体[SP33], prediluted |
| 描述 | 兔单克隆抗体[SP33] to Cytokeratin 20, prediluted |
| 宿主 | Rabbit |
| 经测试应用 | 适用于: IHC-P |
| 种属反应性 | 与反应: Human |
| 免疫原 | Synthetic peptide within Human Cytokeratin 20 aa 400 to the C-terminus (C terminal). The exact sequence is proprietary. Database link: P35900 |
| 阳性对照 | Human colon carcinoma tissue |
| 常规说明 | This product is a recombinant monoclonal antibody, which offers several advantages including: <ul style="list-style-type: none"> - High batch-to-batch consistency and reproducibility - Improved sensitivity and specificity - Long-term security of supply - Animal-free production For more information see here . This product is FOR RESEARCH USE ONLY. For commercial use, please contact partnerships@abcam.com. |

性能

| | |
|------|---|
| 形式 | Liquid |
| 存放说明 | Shipped at 4°C. Store at +4°C. |
| 存储溶液 | pH: 7.60 Preservative: 0.1% Sodium azide Constituents: Tris buffered saline, 1% BSA |
| 纯度 | Protein A/G purified |
| 纯化说明 | Purified from TCS by protein A/G. |
| 克隆 | 单克隆 |
| 克隆编号 | SP33 |

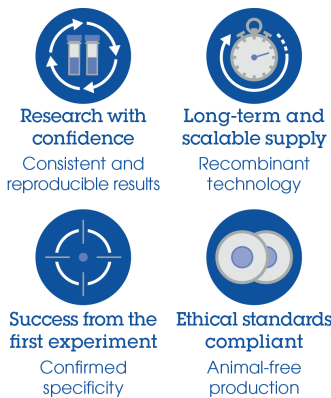
| 同种型 | IgG | | | | | | | |
|-------|---|---|----|------|----|-------|--|---|
| 应用 | <p>The Abpromise guarantee Abpromise™承诺保证使用ab64091于以下的经测试应用</p> <p>“应用说明”部分 下显示的仅为推荐的起始稀释度;实际最佳的稀释度/浓度应由使用者检定。</p> <table> <tr> <th>应用</th><th>Ab评论</th><th>说明</th></tr> <tr> <td>IHC-P</td><td></td><td>1/1. Perform heat mediated antigen retrieval before commencing with IHC staining protocol. Ready-to-use for 30 min at RT.</td></tr> </table> | | 应用 | Ab评论 | 说明 | IHC-P | | 1/1. Perform heat mediated antigen retrieval before commencing with IHC staining protocol. Ready-to-use for 30 min at RT. |
| 应用 | Ab评论 | 说明 | | | | | | |
| IHC-P | | 1/1. Perform heat mediated antigen retrieval before commencing with IHC staining protocol. Ready-to-use for 30 min at RT. | | | | | | |
| 靶标 | | | | | | | | |
| 功能 | Plays a significant role in maintaining keratin filament organization in intestinal epithelia. When phosphorylated, plays a role in the secretion of mucin in the small intestine. | | | | | | | |
| 组织特异性 | Expressed predominantly in the intestinal epithelium. Expressed in luminal cells of colonic mucosa. Also expressed in the Merkel cells of keratinized oral mucosa; specifically at the tips of some rete ridges of the gingival mucosa, in the basal layer of the palatal mucosa and in the taste buds of lingual mucosa. | | | | | | | |
| 序列相似性 | Belongs to the intermediate filament family. | | | | | | | |
| 发展阶段 | First detected at embryonic week 8 in individual 'converted' simple epithelial cells of the developing intestinal mucosa. In later fetal stages, synthesis extends over most goblet cells and a variable number of villus enterocytes. In the developing gastric and intestinal mucosa, expressed in all enterocytes and goblet cells as well as certain 'low-differentiated' columnar cells, whereas the neuroendocrine and Paneth cells are negative. | | | | | | | |
| 翻译后修饰 | Hyperphosphorylation at Ser-13 occurs during the early stages of apoptosis but becomes less prominent during the later stages. Phosphorylation at Ser-13 also increases in response to stress brought on by cell injury. Proteolytically cleaved by caspases during apoptosis. Cleavage occurs at Asp-228. | | | | | | | |
| 细胞定位 | Cytoplasm. | | | | | | | |
| 图片 | | | | | | | | |



Immunohistochemical analysis of paraffin-embedded tissue labelling Cytokeratin 20 with ab64091, prediluted, followed by a secondary antibody. Cytoplasmic staining is observed. Counter stained with Hematoxylin.

Immunohistochemistry (Formalin/PFA-fixed paraffin-embedded sections) - Anti-Cytokeratin 20 antibody [SP33], prediluted (ab64091)

Why choose a recombinant antibody?



Anti-Cytokeratin 20 antibody [SP33], prediluted (ab64091)

Please note: All products are "FOR RESEARCH USE ONLY. NOT FOR USE IN DIAGNOSTIC PROCEDURES"

Our Abpromise to you: Quality guaranteed and expert technical support

- Replacement or refund for products not performing as stated on the datasheet
- Valid for 12 months from date of delivery
- Response to your inquiry within 24 hours
- We provide support in Chinese, English, French, German, Japanese and Spanish
- Extensive multi-media technical resources to help you
- We investigate all quality concerns to ensure our products perform to the highest standards

If the product does not perform as described on this datasheet, we will offer a refund or replacement. For full details of the Abpromise, please visit <https://www.abcam.cn/abpromise> or contact our technical team.

Terms and conditions

- Guarantee only valid for products bought direct from Abcam or one of our authorized distributors