


# Anti-Cytokeratin 20 antibody [SP33] ab64090

重组 RabMAb

★★★★★ [1 Abreviews](#) [2 References](#) [7 图像](#)

### 概述

产品名称	Anti-Cytokeratin 20抗体[SP33]
描述	兔单克隆抗体[SP33] to Cytokeratin 20
宿主	Rabbit
经测试应用	适用于: IHC-P, IHC-Fr, ICC/IF, Flow Cyt
种属反应性	与反应: Rat, Human 预测可用于: Mouse, Cow, Dog 
免疫原	Synthetic peptide within Human Cytokeratin 20 aa 400 to the C-terminus (C terminal). The exact sequence is proprietary. Database link: <a href="#">P35900</a>
阳性对照	IHC-P: Human colon carcinoma tissue. IHC-Fr: Rat colon Tissue ICC/IF: HT-29 cells Flow Cyt: HT-29 cells
常规说明	This product is a recombinant monoclonal antibody, which offers several advantages including: <ul style="list-style-type: none"><li>- High batch-to-batch consistency and reproducibility</li><li>- Improved sensitivity and specificity</li><li>- Long-term security of supply</li><li>- Animal-free production</li></ul> For more information <a href="#">see here</a> .  <b>This product is FOR RESEARCH USE ONLY. For commercial use, please contact <a href="mailto:partnerships@abcam.com">partnerships@abcam.com</a>.</b>

### 性能

形式	Liquid
存放说明	Shipped at 4°C. Store at +4°C short term (1-2 weeks). Upon delivery aliquot. Store at -20°C. Avoid freeze / thaw cycle.
存储溶液	pH: 7.60 Preservative: 0.1% Sodium azide Constituents: PBS, 1% BSA
纯度	Protein A/G purified

纯化说明	Purified from TCS by protein A/G.
克隆	单克隆
克隆编号	SP33
同种型	IgG

## 应用

**The Abpromise guarantee**      **Abpromise™** 承诺保证使用 ab64090 于以下的经测试应用

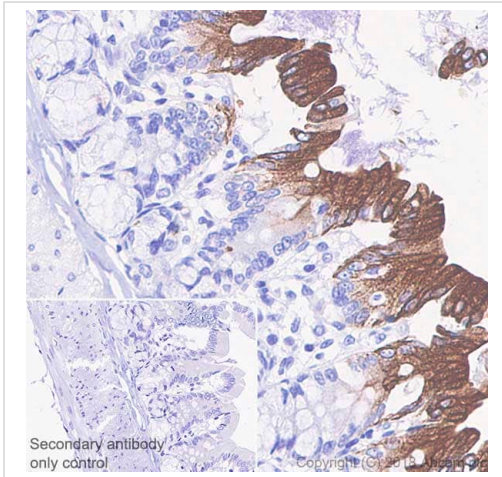
“应用说明”部分 下显示的仅为推荐的起始稀释度；实际最佳的稀释度/浓度应由使用者检定。

应用	Ab评论	说明
IHC-P		1/100. Boil tissue section in citrate buffer pH 6.0 for 10 minutes followed by cooling at room temperature for 20 minutes. Incubate with primary antibody for 30 minutes at room temperature.
IHC-Fr	★★★★★ (1)	1/1000.
ICC/IF		1/500.
Flow Cyt		1/1700.

## 靶标

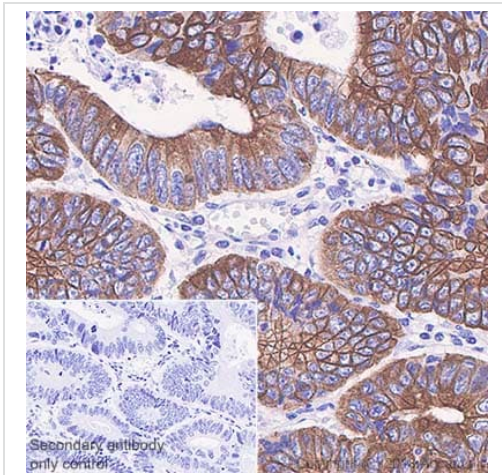
功能	Plays a significant role in maintaining keratin filament organization in intestinal epithelia. When phosphorylated, plays a role in the secretion of mucin in the small intestine.
组织特异性	Expressed predominantly in the intestinal epithelium. Expressed in luminal cells of colonic mucosa. Also expressed in the Merkel cells of keratinized oral mucosa; specifically at the tips of some rete ridges of the gingival mucosa, in the basal layer of the palatal mucosa and in the taste buds of lingual mucosa.
序列相似性	Belongs to the intermediate filament family.
发展阶段	First detected at embryonic week 8 in individual 'converted' simple epithelial cells of the developing intestinal mucosa. In later fetal stages, synthesis extends over most goblet cells and a variable number of villus enterocytes. In the developing gastric and intestinal mucosa, expressed in all enterocytes and goblet cells as well as certain 'low-differentiated' columnar cells, whereas the neuroendocrine and Paneth cells are negative.
翻译后修饰	Hyperphosphorylation at Ser-13 occurs during the early stages of apoptosis but becomes less prominent during the later stages. Phosphorylation at Ser-13 also increases in response to stress brought on by cell injury. Proteolytically cleaved by caspases during apoptosis. Cleavage occurs at Asp-228.
细胞定位	Cytoplasm.

## 图片



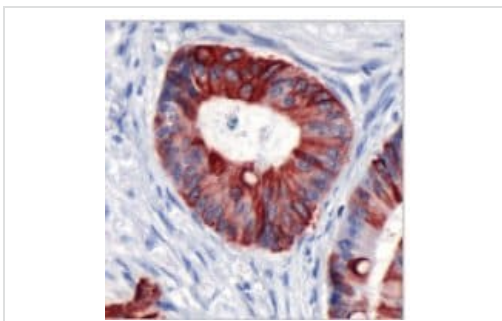
Immunohistochemistry (Formalin/PFA-fixed paraffin-embedded sections) analysis of Rat colon tissue sections labeling Cytokeratin 20 with ab64090 at 1/100 dilution (17.9 µg/ml). Heat mediated antigen retrieval with Tris-EDTA buffer (pH 6.0, epitope retrieval solution 1) for 10mins. Rabbit specific IHC polymer detection kit HRP/DAB (**ab209101**) was used as the secondary antibody. Hematoxylin was used as a counterstain. Positive staining on rat colon, performed on a Leica Biosystems BOND™ RX instrument. The section was incubated with ab64090 for 30 mins at room temperature.

Immunohistochemistry (Formalin/PFA-fixed paraffin-embedded sections) - Anti-Cytokeratin 20 antibody [SP33] (ab64090)



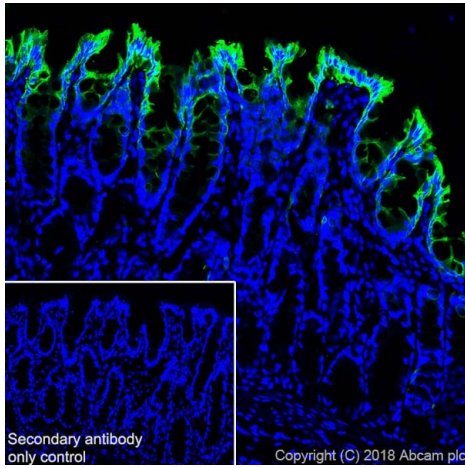
Immunohistochemistry (Formalin/PFA-fixed paraffin-embedded sections) analysis of Human colon carcinoma tissue sections labeling Cytokeratin 20 with ab64090 at 1/100 dilution (17.9 µg/ml). Heat mediated antigen retrieval with Tris-EDTA buffer (pH 6.0, epitope retrieval solution 1) for 10mins. Rabbit specific IHC polymer detection kit HRP/DAB (**ab209101**) was used as the secondary antibody. Hematoxylin was used as a counterstain. Positive staining on human colon carcinoma, performed on a Leica Biosystems BOND™ RX instrument. The section was incubated with ab64090 for 30 mins at room temperature.

Immunohistochemistry (Formalin/PFA-fixed paraffin-embedded sections) - Anti-Cytokeratin 20 antibody [SP33] (ab64090)



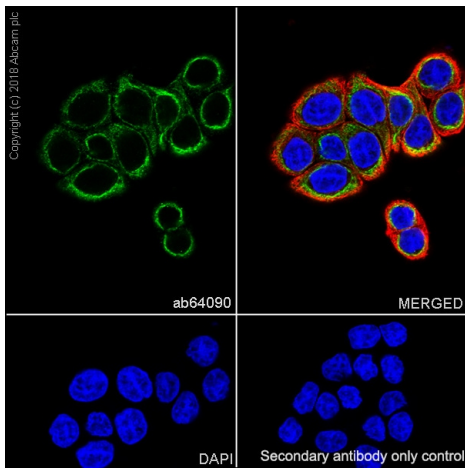
Formalin-fixed, paraffin-embedded human colon carcinoma tissue stained for Cytokeratin 20 with ab64090 at a 1/100 dilution in immunohistochemical analysis.

Immunohistochemistry (Formalin/PFA-fixed paraffin-embedded sections) - Anti-Cytokeratin 20 antibody [SP33] (ab64090)



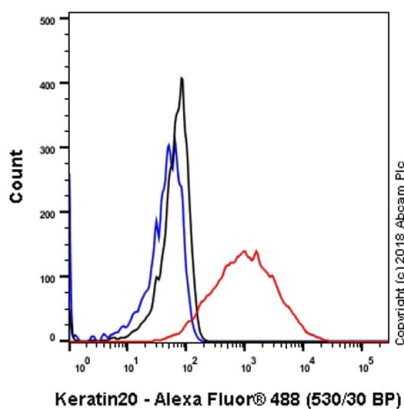
Immunohistochemistry (Frozen sections) - Anti-Cytokeratin 20 antibody [SP33] (ab64090)

Immunohistochemistry (Frozen) analysis of rat colon tissue section labeling Cytokeratin 20 with purified ab64090 at 1/1000 (1.8 µg/ml). Sections were fixed in 4% paraformaldehyde and permeabilized with 0.2% Triton X-100. Antigen retrieval was heat mediated antigen retrieval using sodium citrate buffer (10mM citrate pH 6.0 + 0.05% Tween-20). Goat anti rabbit IgG (Alexa Fluor® 488, **ab150077**) was used as the secondary antibody at 1/1000 (2 µg/ml) dilution. DAPI was used as nuclear counterstain. PBS instead of the primary antibody was used as the secondary antibody only control.



Immunocytochemistry/ Immunofluorescence - Anti-Cytokeratin 20 antibody [SP33] (ab64090)

Immunocytochemistry/ Immunofluorescence analysis of HT-29 (human colorectal adenocarcinoma epithelial cell) cells labeling Cytokeratin 20 with purified ab64090 at 1/500 (3.58 µg/ml). Cells were fixed in 4% paraformaldehyde and permeabilized with 0.1% Triton X-100. Cells were counterstained with **ab195889** Anti-alpha Tubulin antibody [DM1A] - Microtubule Marker (Alexa Fluor® 594) 1/200 (2.5 µg/ml). Goat anti rabbit IgG (Alexa Fluor® 488, **ab150077**) was used as the secondary antibody at 1/1000 (2 µg/ml) dilution. DAPI was used as nuclear counterstain. PBS instead of the primary antibody was used as the secondary antibody only control.



Flow Cytometry - Anti-Cytokeratin 20 antibody [SP33] (ab64090)

Flow cytometry analysis of HT-29 (human colorectal adenocarcinoma) labeling Cytokeratin 20 with purified ab64090 at 1/1700 dilution (1.05 µg/ml) (red). Cells were fixed with 4% paraformaldehyde and permeabilised with 90% methanol. Goat anti rabbit IgG (Alexa Fluor® 488, **ab150077**) at 1/2000 dilution was used as a secondary antibody. Isotype control -Rabbit monoclonal IgG (**ab172730**) (Black). Unlabeled control -Unlabelled cells (blue).

### Why choose a recombinant antibody?



**Research with confidence**  
Consistent and reproducible results



**Long-term and scalable supply**  
Recombinant technology



**Success from the first experiment**  
Confirmed specificity



**Ethical standards compliant**  
Animal-free production

Anti-Cytokeratin 20 antibody [SP33] (ab64090)

**Please note:** All products are "FOR RESEARCH USE ONLY. NOT FOR USE IN DIAGNOSTIC PROCEDURES"

### Our Abpromise to you: Quality guaranteed and expert technical support

---

- Replacement or refund for products not performing as stated on the datasheet
- Valid for 12 months from date of delivery
- Response to your inquiry within 24 hours
- We provide support in Chinese, English, French, German, Japanese and Spanish
- Extensive multi-media technical resources to help you
- We investigate all quality concerns to ensure our products perform to the highest standards

If the product does not perform as described on this datasheet, we will offer a refund or replacement. For full details of the Abpromise, please visit <https://www.abcam.cn/abpromise> or contact our technical team.

### Terms and conditions

---

- Guarantee only valid for products bought direct from Abcam or one of our authorized distributors