

# Anti-Cytokeratin 20 antibody - Cytoskeleton Marker ab97511

[6 References](#) [4 图像](#)

### 概述

产品名称	Anti-Cytokeratin 20抗体- Cytoskeleton Marker
描述	兔多克隆抗体to Cytokeratin 20 - Cytoskeleton Marker
宿主	Rabbit
经测试应用	适用于: WB, IHC-P, ICC/IF
种属反应性	与反应: Mouse, Human
免疫原	Recombinant fragment, corresponding to a region within amino acids 75-287 of Human Cytokeratin 20 (NP_061883).
阳性对照	HeLa cell, HT29 xenograft
常规说明	<p>The Life Science industry has been in the grips of a reproducibility crisis for a number of years. Abcam is leading the way in addressing this with our range of recombinant monoclonal antibodies and knockout edited cell lines for gold-standard validation. Please check that this product meets your needs before purchasing.</p> <p>If you have any questions, special requirements or concerns, please send us an inquiry and/or contact our Support team ahead of purchase. Recommended alternatives for this product can be found below, along with publications, customer reviews and Q&amp;As</p>

### 性能

形式	Liquid
存放说明	Shipped at 4°C. Upon delivery aliquot. Store at -20°C or -80°C. Avoid freeze / thaw cycle.
存储溶液	pH: 7.00 Preservative: 0.01% Thimerosal (merthiolate) Constituents: 1.21% Tris, 0.75% Glycine, 10% Glycerol (glycerin, glycerine)
纯度	Immunogen affinity purified
克隆	多克隆
同种型	IgG

### 应用

The Abpromise guarantee

**Abpromise™** 承诺保证使用ab97511于以下的经测试应用

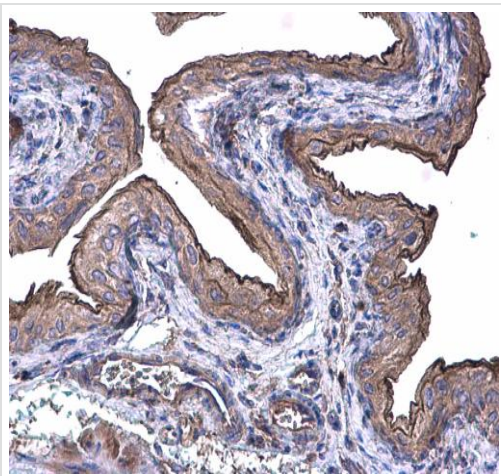
“应用说明”部分 下显示的仅为推荐的起始稀释度;实际最佳的稀释度/浓度应由使用者检定。

应用	Ab评论	说明
WB		1/500 - 1/3000. Predicted molecular weight: 48 kDa.
IHC-P		1/100 - 1/500.
ICC/IF		1/100 - 1/200.

## 靶标

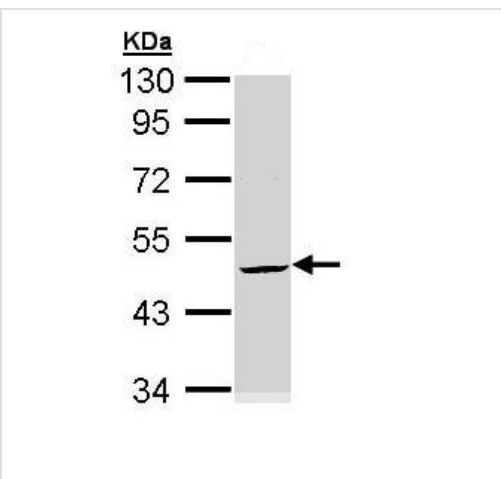
功能	Plays a significant role in maintaining keratin filament organization in intestinal epithelia. When phosphorylated, plays a role in the secretion of mucin in the small intestine.
组织特异性	Expressed predominantly in the intestinal epithelium. Expressed in luminal cells of colonic mucosa. Also expressed in the Merkel cells of keratinized oral mucosa; specifically at the tips of some rete ridges of the gingival mucosa, in the basal layer of the palatal mucosa and in the taste buds of lingual mucosa.
序列相似性	Belongs to the intermediate filament family.
发展阶段	First detected at embryonic week 8 in individual 'converted' simple epithelial cells of the developing intestinal mucosa. In later fetal stages, synthesis extends over most goblet cells and a variable number of villus enterocytes. In the developing gastric and intestinal mucosa, expressed in all enterocytes and goblet cells as well as certain 'low-differentiated' columnar cells, whereas the neuroendocrine and Paneth cells are negative.
翻译后修饰	Hyperphosphorylation at Ser-13 occurs during the early stages of apoptosis but becomes less prominent during the later stages. Phosphorylation at Ser-13 also increases in response to stress brought on by cell injury. Proteolytically cleaved by caspases during apoptosis. Cleavage occurs at Asp-228.
细胞定位	Cytoplasm.

## 图片



Immunohistochemistry (Formalin/PFA-fixed paraffin-embedded sections) - Anti-Cytokeratin 20 antibody - Cytoskeleton Marker (ab97511)

Ab97511 staining Cytokeratin 20 in Mouse urinary bladder by Immunohistochemistry (IHC-P-paraformaldehyde-fixed, paraffin embedded sections). Sample was incubated with primary antibody at a 1:500 dilution.

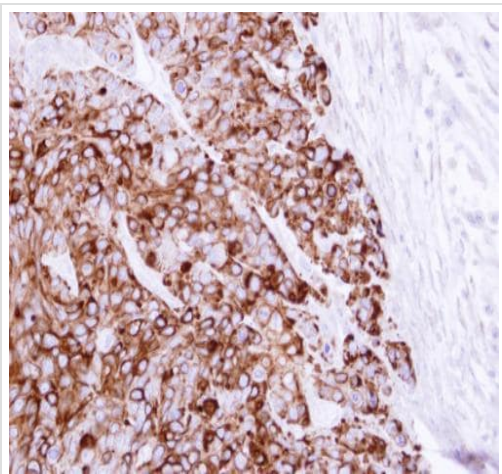


Western blot - Anti-Cytokeratin 20 antibody - Cytoskeleton Marker (ab97511)

Anti-Cytokeratin 20 antibody - Cytoskeleton Marker (ab97511) at 1/3000 dilution + HeLa whole cell lysate at 30 µg

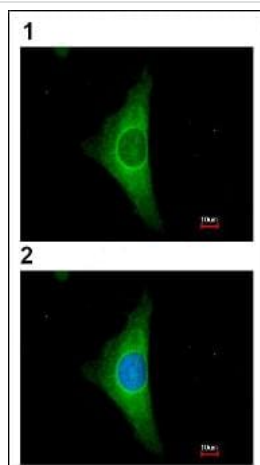
**Predicted band size: 48 kDa**

10% SDS PAGE



Ab97511 staining Cytokeratin 20 in HT29 xenograft by Immunohistochemistry (IHC-P - paraformaldehyde - fixed, paraffin embedded sections). Samples were incubated with primary antibody at 1:100 dilution.

Immunohistochemistry (Formalin/PFA-fixed paraffin-embedded sections) - Anti-Cytokeratin 20 antibody - Cytoskeleton Marker (ab97511)



Immunofluorescence analysis of Cytokeratin 20 in paraformaldehyde fixed HeLa, using ab97511 at a 1/200 dilution. Lower image (2): merged with DNA probe.

Immunocytochemistry/ Immunofluorescence - Anti-Cytokeratin 20 antibody - Cytoskeleton Marker (ab97511)

**Please note:** All products are "FOR RESEARCH USE ONLY. NOT FOR USE IN DIAGNOSTIC PROCEDURES"

### Our Abpromise to you: Quality guaranteed and expert technical support

- Replacement or refund for products not performing as stated on the datasheet
- Valid for 12 months from date of delivery
- Response to your inquiry within 24 hours
- We provide support in Chinese, English, French, German, Japanese and Spanish
- Extensive multi-media technical resources to help you
- We investigate all quality concerns to ensure our products perform to the highest standards

If the product does not perform as described on this datasheet, we will offer a refund or replacement. For full details of the Abpromise,

please visit <https://www.abcam.cn/abpromise> or contact our technical team.

## **Terms and conditions**

---

- Guarantee only valid for products bought direct from Abcam or one of our authorized distributors