

Anti-Cytokeratin 19 antibody [BA-17] ab7755

敲除验证

★★★★☆ 5 Abreviews 19 References 8 图像

概述

产品名称	Anti-Cytokeratin 19抗体[BA-17]
描述	小鼠单克隆抗体[BA-17] to Cytokeratin 19
宿主	Mouse
特异性	Cytokeratin peptide 19 (40 kDa) in human tissue.
经测试应用	适用于: Flow Cyt (Intra), ICC/IF, WB, IHC-P, IP
种属反应性	与反应: Human
免疫原	Tissue, cells or virus corresponding to Human Cytokeratin 19. Mammary organoids Database link: P08727
阳性对照	ICC/IF KO: HepG2, MCF7 cells (MCF7-KRT19 KO used as a negative cell line). WB: MCF-7, HepG2, SW480, MDA-MB-361 cell lysates. IHC-P: Human skin. IP: HepG2 cell extract. Flow Cyt (Intra): MCF7 cells.
常规说明	<p>The Life Science industry has been in the grips of a reproducibility crisis for a number of years. Abcam is leading the way in addressing this with our range of recombinant monoclonal antibodies and knockout edited cell lines for gold-standard validation. Please check that this product meets your needs before purchasing.</p> <p>If you have any questions, special requirements or concerns, please send us an inquiry and/or contact our Support team ahead of purchase. Recommended alternatives for this product can be found below, along with publications, customer reviews and Q&As</p>

性能

形式	Liquid
存放说明	Shipped at 4°C. Store at +4°C short term (1-2 weeks). Upon delivery aliquot. Store at -20°C or -80°C. Avoid freeze / thaw cycle.
存储溶液	pH: 7.40 Preservative: 0.097% Sodium azide Constituent: PBS
纯度	Protein A purified
克隆	单克隆

克隆编号	BA-17
同种型	IgG1

应用

The Abpromise guarantee **Abpromise™**承诺保证使用ab7755于以下的经测试应用

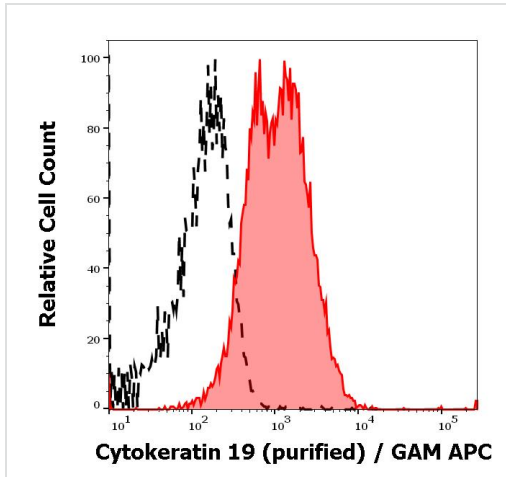
“应用说明”部分 下显示的仅为推荐的起始稀释度;实际最佳的稀释度/浓度应由使用者检定。

应用	Ab评论	说明
Flow Cyt (Intra)		Use a concentration of 1 - 5 µg/ml. ab170190 - Mouse monoclonal IgG1, is suitable for use as an isotype control with this antibody.
ICC/IF		Use at an assay dependent concentration.
WB	★★★★★ (2)	Use a concentration of 1 - 2 µg/ml.
IHC-P	★★★★★ (2)	Use a concentration of 5 - 10 µg/ml. Perform enzymatic antigen retrieval before commencing with IHC staining protocol.
IP		Use at an assay dependent concentration.

靶标

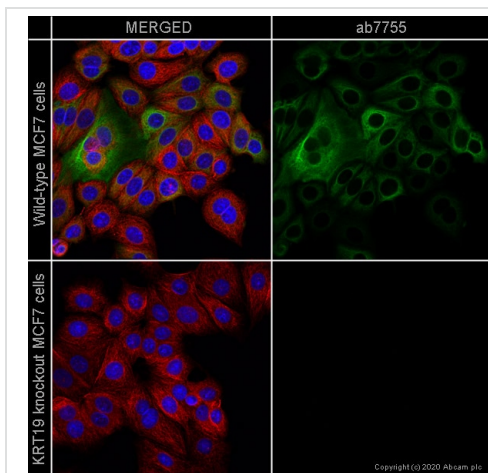
功能	Involved in the organization of myofibers. Together with KRT8, helps to link the contractile apparatus to dystrophin at the costameres of striated muscle.
组织特异性	Expressed in a defined zone of basal keratinocytes in the deep outer root sheath of hair follicles. Also observed in sweat gland and mammary gland ductal and secretory cells, bile ducts, gastrointestinal tract, bladder urothelium, oral epithelia, esophagus, ectocervical epithelium (at protein level). Expressed in epidermal basal cells, in nipple epidermis and a defined region of the hair follicle. Also seen in a subset of vascular wall cells in both the veins and artery of human umbilical cord, and in umbilical cord vascular smooth muscle. Observed in muscle fibers accumulating in the costameres of myoplasm at the sarcolemma in structures that contain dystrophin and spectrin.
序列相似性	Belongs to the intermediate filament family.
发展阶段	Present in hair follicles at all stages of development.
结构域	This keratin differs from all other IF proteins in lacking the C-terminal tail domain.

图片



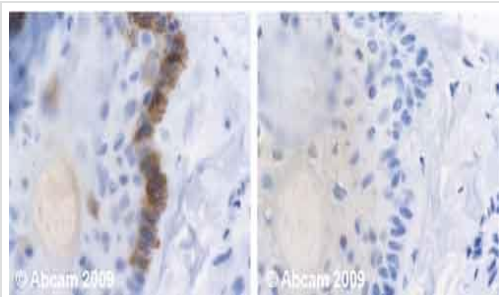
Flow Cytometry (Intracellular) - Anti-Cytokeratin 19 antibody [BA-17] (ab7755)

Separation of MCF-7 cells (red-filled) from human leukocytes (black-dashed) in flow cytometry analysis (intracellular staining) of peripheral whole blood spiked with MCF-7 cells stained using ab7755 (concentration in sample 3 µg/ml, GAM APC).



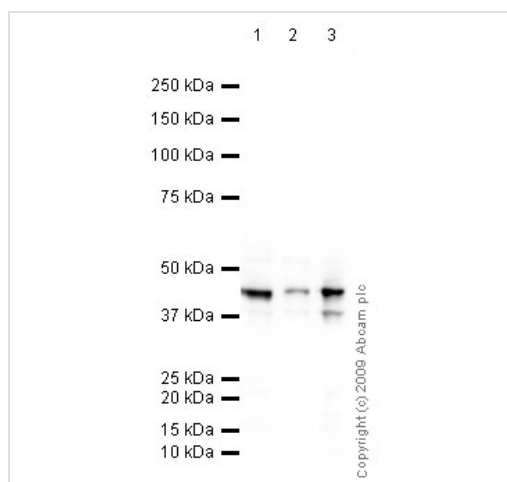
Immunocytochemistry/ Immunofluorescence - Anti-Cytokeratin 19 antibody [BA-17] (ab7755)

ab7755 staining Cytokeratin 19 in wild-type MCF7 cells (top panel) and KRT19 knockout MCF7 cells (bottom panel). The cells were fixed with 100% methanol (5 min), permeabilized with 0.1% Triton X-100 for 5 minutes and then blocked with 1% BSA/10% normal goat serum/0.3M glycine in 0.1% PBS-Tween for 1h. The cells were then incubated with ab7755 at 5µg/ml concentration and **ab6046** (Rabbit polyclonal to beta Tubulin) at 1/1000 dilution overnight at +4°C, followed by a further incubation at room temperature for 1h with a goat secondary antibody to mouse IgG (Alexa Fluor® 488) (**ab150117**) at 2 µg/ml (shown in green) and a goat secondary antibody to rabbit IgG (Alexa Fluor® 594) (**ab150080**) at 2 µg/ml (shown in red). Nuclear DNA was labelled in blue with DAPI. Image was taken with a confocal microscope (Leica-Microsystems, TCS SP8).



Immunohistochemistry (Formalin/PFA-fixed paraffin-embedded sections) - Anti-Cytokeratin 19 antibody [BA-17] (ab7755)

Human normal skin. Staining is observed in the cytoplasm (epidermal basal cells). Left panel: with primary antibody at 2 µg/ml. Right panel: isotype control. Sections were stained using an automated system DAKO Autostainer Plus, at room temperature: sections were rehydrated and antigen retrieved with the Dako 3 in 1 AR buffers citrate EDTA pH 9.0 in a DAKO PT Link. Slides were peroxidase blocked in 3% H₂O₂ in methanol for 10 mins. They were then blocked with Dako Protein block for 10 minutes (containing casein 0.25% in PBS) then incubated with primary antibody for 20 min and detected with Dako envision flex amplification kit for mouse for 30 minutes. Colorimetric detection was completed with Diaminobenzidine for 5 minutes. Slides were counterstained with Haematoxylin and coverslipped under DePeX. Please note that for manual staining we recommend to optimize the primary antibody concentration and incubation time (overnight incubation), and amplification may be required.



Western blot - Anti-Cytokeratin 19 antibody [BA-17] (ab7755)

All lanes : Anti-Cytokeratin 19 antibody [BA-17] (ab7755) at 5 µg/ml

Lane 1 : HepG2 (Human hepatocellular liver carcinoma cell line) Whole Cell Lysate

Lane 2 : SW480 (Human colon adenocarcinoma cell line) Whole Cell Lysate

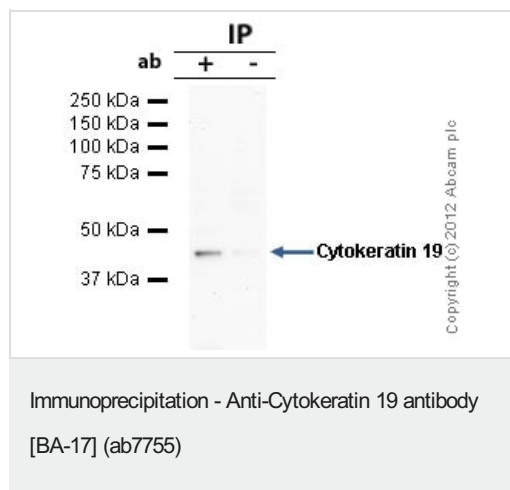
Lane 3 : MDA-MB-361 (Human breast adenocarcinoma cell line) Whole Cell Lysate

Lysates/proteins at 10 µg per lane.

Secondary

All lanes : Goat polyclonal to Mouse IgG - H&L - Pre-Adsorbed (HRP) at 1/3000 dilution

Observed band size: 44 kDa



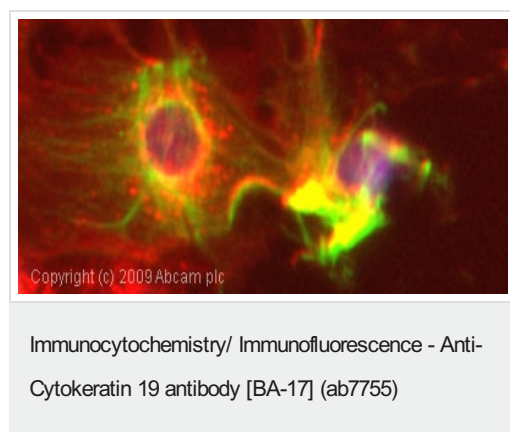
Cytokeratin 19 was immunoprecipitated using 0.5mg HepG2 whole cell extract, 5µg of Mouse monoclonal to Cytokeratin 19 and 50µl of protein G magnetic beads (+). No antibody was added to the control (-).

The antibody was incubated under agitation with Protein G beads for 10min, HepG2 whole cell extract lysate diluted in RIPA buffer was added to each sample and incubated for a further 10min under agitation.

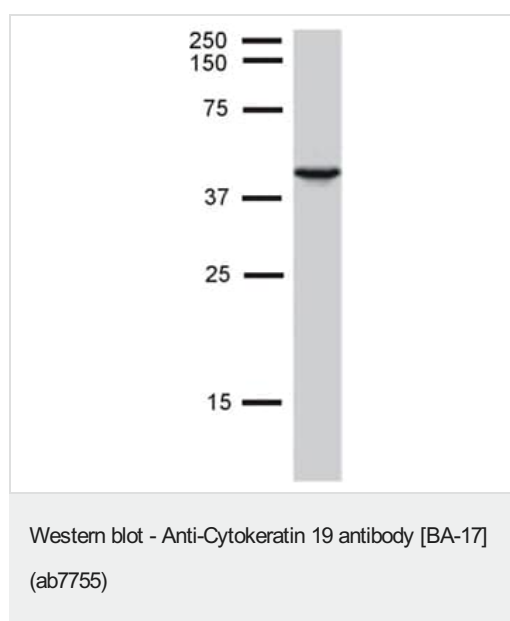
Proteins were eluted by addition of 40µl SDS loading buffer and incubated for 10min at 70°C; 10µl of each sample was separated on a SDS PAGE gel, transferred to a nitrocellulose membrane, blocked with 5% BSA and probed with ab7755.

Secondary: Goat polyclonal to mouse IgG light chain specific (HRP) at 1/5000 dilution.

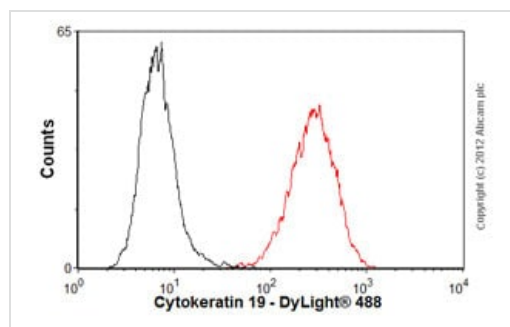
Band: 44kDa: Cytokeratin 19



ICC/IF image of ab7755 stained HepG2 cells. The cells were 100% methanol fixed (5 min) and then incubated in 1%BSA / 10% normal goat serum / 0.3M glycine in 0.1% PBS-Tween for 1h to permeabilise the cells and block non-specific protein-protein interactions. The cells were then incubated with the antibody (ab7755, 1µg/ml) overnight at +4°C. The secondary antibody (green) was Alexa Fluor® 488 goat anti-mouse IgG (H+L) used at a 1/1000 dilution for 1h. Alexa Fluor® 594 WGA was used to label plasma membranes (red) at a 1/200 dilution for 1h. DAPI was used to stain the cell nuclei (blue) at a concentration of 1.43µM.



Anti-Cytokeratin 19 antibody [BA-17] (ab7755) + Cell lysates prepared from human MCF-7 cells



Flow Cytometry (Intracellular) - Anti-Cytokeratin 19 antibody [BA-17] (ab7755)

Overlay histogram showing MCF7 cells stained with ab7755 (red line). The cells were fixed with 80% methanol (5 min) and then permeabilized with 0.1% PBS-Tween for 20 min. The cells were then incubated in 1x PBS / 10% normal goat serum / 0.3M glycine to block non-specific protein-protein interactions followed by the antibody (ab7755, 1 µg/1x10⁶ cells) for 30 min at 22°C. The secondary antibody used was DyLight® 488 goat anti-mouse IgG (H+L) ([ab96879](#)) at 1/500 dilution for 30 min at 22°C. Isotype control antibody (black line) was mouse IgG1 [CIGG1] ([ab91353](#), 2 µg/1x10⁶ cells) used under the same conditions. Acquisition of >5,000 events was performed. This antibody gave a positive signal in MCF7 cells fixed with 4% paraformaldehyde (10 min)/permeabilized with 0.1% PBS-Tween for 20 min used under the same conditions.

Please note: All products are "FOR RESEARCH USE ONLY. NOT FOR USE IN DIAGNOSTIC PROCEDURES"

Our Abpromise to you: Quality guaranteed and expert technical support

- Replacement or refund for products not performing as stated on the datasheet
- Valid for 12 months from date of delivery
- Response to your inquiry within 24 hours
- We provide support in Chinese, English, French, German, Japanese and Spanish
- Extensive multi-media technical resources to help you
- We investigate all quality concerns to ensure our products perform to the highest standards

If the product does not perform as described on this datasheet, we will offer a refund or replacement. For full details of the Abpromise, please visit <https://www.abcam.cn/abpromise> or contact our technical team.

Terms and conditions

- Guarantee only valid for products bought direct from Abcam or one of our authorized distributors